

School Board Preparing Budget With No Increase in Taxes

As with everyone, inflation and the problems of the economy are causing great concern for the Chelsea School System. But while costs continue upwards, the Chelsea Board of Education has initiated several steps to prepare an operational budget for the next school year, without asking the public for an increase in school taxes.

"At the time of the 1974 millage vote, we told Chelsea area citizens that we would hold the line on taxes for two

years if our last request was approved," said Howard Haselschwerdt, Board president. "If at all possible, we will make every effort to fulfill that promise."

Inflation alone is not the only problem. Governor Milliken trimmed state expenses by 1.5 percent during December. That action reduced state aid to Chelsea schools by \$19,000.

"In addition, attendance this year numbered 2,636 pupils against our original estimate of

2,700," Haselschwerdt explained. "This reduction meant the state reduced its aid to us by about \$60,000. If the economy remains down, and we experience additional enrollment loss, the state will reduce its aid accordingly."

"As with all households and businesses, we too face the rapid increase in costs for heat and light as well as such things as books, teaching materials and even such major purchases as buses," said Haselschwerdt. "Such costs continue to drain our

resources, yet we must provide essential services to our schools."

Haselschwerdt pointed out that although many area property owners have experienced substantial increases in property taxes because of state equalization, more money has not found its way into the schools.

"For every dollar in increased taxes, one dollar has been removed in state aid," he said. "Increased property taxes actually means we pay a greater share of our education program

as we become more self-sufficient. The total available to the schools remains the same as a result of the State Aid Act which equalized educational funds across Michigan school systems."

"I know this is a difficult idea to accept," Haselschwerdt continued. "If taxes on property go up through equalization it would seem to mean that the schools would have more funds but under current state law this hasn't happened and it won't happen."

Among the plans being con-

sidered by the board in budget planning are these:

—The Curriculum Committee of the board has asked the teachers to evaluate all programs using the criteria of relationship of course content to graduation requirements; the number of students taking the course; and the value of the course in over-all education consideration. This means that courses taken by only a few students may be eliminated, or worked into larger, more inclusive courses, or perhaps per-

mitted to continue if critical to the educational process.

—With fewer students in the beginning grades, teachers will be asked to look at possibilities of combining some class instruction to achieve more effective use of teacher abilities. The board and the teachers will take advantage of the new educational material centers at the elementary schools to maximize effectiveness of improved techniques.

"What we are attempting to do," said Charles Cameron,

superintendent of schools, "is achieve economic thriftiness rather than cutbacks. If successful we will not cutback our program in any serious way, we will not reduce our professional staff and we will be able to staff and equip our new vocational facilities and the materials centers (libraries) at the elementary schools."

Haselschwerdt said that the board and the administration will make every effort to keep the public informed as planning evolves.

WEATHER

	Min.	Max.	Precip.
Wednesday, March 5	24	34	Trace
Thursday, March 6	20	41	Trace
Friday, March 7	32	38	Trace
Saturday, March 8	28	35	0.54
Sunday, March 9	27	34	0.01
Monday, March 10	30	31	0.00
Tuesday, March 11	25	33	0.01

ONE HUNDRED-FIFTH YEAR—No. 39

12 Pages This Week

Plus 4-Page Supplement

CHELSEA, MICHIGAN, THURSDAY, MARCH 13, 1975

15c per copy

SUBSCRIPTION: \$6.00 PER YEAR

The Chelsea Standard

QUOTE

"He serves his party best who serves the country best."
—R. B. Hayes.

Ten Seniors Join Cast Preparing Parts for 'Once Upon A Mattress'

Dedicated seniors at Chelsea High school will be giving their final performance in this year's musical, "Once Upon A Mattress." The performance to be given Thursday, Friday, and Saturday evenings, March 20, 21 and 22, will be held in the Chelsea High school auditorium.

Among seniors included in the cast is Cindy Turcott, a four-year veteran of the Chelsea High school stage. Cindy's role in this year's performance is that of Queen, mother to Prince Dauntless. Cindy says that she enjoys portraying the over-protective, domineering mother, and believes "the cast to be working well together."

Cindy sustains an interest in music, evidenced by her participation in four years of school musicals. This summer, she will have an opportunity to pursue this interest even farther when she will travel to Europe with the chorus of Musical Youth International. Cindy and fellow musicians will spend five weeks touring the country and giving musical performances.

In the fall, Cindy hopes to attend college, majoring in social work. Playing the part of Princess Winnifred will be Jodi Daniels. Jodi participated in last year's show in which she turned in a memorable performance as Agnes Gooch in "Mame."

Jodi was this year's recipient of the DAR award. Her future plans include the University of

Miami in Ohio, where Jody will be a freshman this fall.

Relatively new to Chelsea is Steve Figg who's part in this year's production is that of Sir Harry. Steve has been active in drama since he moved to the area, having held parts in every play, including some summer performances.

Performing as the Wizard will be Jim Powers. He too has been in many musical productions, with a performance in last year's production as Mame's servant.

Holding the supporting role of Sir Studley is Keith Cockerline. This will be Keith's second stage appearance. Aside from his interests in drama, Keith is a skater,

and served as this year's captain of the Chelsea High school hockey team.

In the fall he will join the U. of M. student body where he plans to major in paper science. Seniors who will also be in this year's production, having taken part in previous school plays will be Skip Foytik who will play the part of the court dancer, Sir Harold; and JoAnn LaFontaine.

Debutantes to the stage will be seniors Ann Treddo, Michelle Maistre, and Elaine Musolf.

Seats still remain for all performances. However the public is advised to get them soon.

For further information telephone Suzanne Morrison at 475-7115. All seats are reserved.

Special Activities for Girl Scout Week

Chelsea Girl Scouts are joining with girls across the United States in celebrating Girl Scout Week, March 9-15.

The girls began the week by observing Girl Scout Sunday on March 9. Girls attended their churches in uniform and participated as greeters and acolytes in several of the local church services. Projects and posters de-

monstrating the troop's own ideas about Girl Scouting will be on display throughout this week in the following downtown store windows: Vogel's, Tailfeather Creations, Chelsea Drug, Dancer's, Al Nalli's Music, Chelsea Hardware, Grove's 5 and 10, and Luke's Sporting Goods.

Chelsea Girl Scout Troops now number 13 - 6 Brownie, 5 Junior, 1 Cadette, and 1 Senior Troop. A new Brownie Troop and a new Junior Troop were added this year.

There are about 215 participating Girl members, ages 6 to 17. The Troops have fun going camping, doing outdoor activities, participating in service projects, working on Girl Scout badges and, of course, enjoying such recreational activities as swimming, bowling, and skating. Along with the fun, the program is designed to help girls grow in their abilities to think, express themselves, and explore new interests and skills.

Adult Girl Scouts work alongside the girls and serve as leaders, Troop Committee members, and

(Continued on page three)

Independents All Elected, But Barely

Forty-eight, of an approximate 675 registered Chelsea voters, voted Monday in the Village Election held at Sylvan Town Hall.

Elected to the position of village clerk was Thomas Neumeyer. Neumeyer was acting clerk five months prior to Monday's election.

Elected to a third term as trustee was incumbent Richard Borton.

Sam Johnson, also an incumbent, will be serving his second term as a village trustee.

A newcomer, David Rowe filled the seat vacated by former trustee Eldon Gorton who elected not to run in this year's election.

Anne Belser, and Shirley Schaible were both elected to serve three-year terms on the Library Board.



WARREN SPAULDING enjoyed ice cream and cake at a surprise birthday celebration held in his honor at the United Methodist Home. Spaulding founded the "Spaulding for Children" adoption agency, which provides for the adoption of older and disabled children.

W. Spaulding Observes Birthday

Warren Spaulding, a resident of Chelsea United Methodist Retirement Home, observed his 92nd birthday on March 1.

On relatives, representing three generations of the family were on hand for a surprise celebration in the recreation room of the retirement home and cake were served to Spaulding's day.

Spaulding is the creator of the "Spaulding for Children Agency," which provides for the adoption of older and handicapped children.

Began in 1968, the agency is a result of a life-long belief held by Mr. Spaulding; that parentless children of all ages and of every description are entitled to a permanent home.

Spaulding's centennial home-

stead now serves as headquarters for the agency.

Family members who joined in Saturday's celebration were, Chester and Madeline Fletcher, Shirley Rowe, Gary and Linda Rowe, Marjorie and Ted Welch, Patricia Welch, Florence Fletcher and Gladys Burroughs; all of whom are nieces or nephews of Spaulding.



NEW PASTOR: The Rev. R. J. Ratzlaff will be installed as the new pastor of St. Paul United Church of Christ in a special installation service Sunday, March 16 at 3:30 p.m. A reception for the pastor and his family will be held immediately following the service.

New Pastor To Be Installed Sunday at St. Paul Church

New to St. Paul's United Church of Christ is the Rev. R. J. Ratzlaff.

The Rev. Ratzlaff will be installed as pastor of St. Paul's Sunday, March 16 at 3:30 p.m. A special installation service has been planned.

A native of Milwaukee, Wis., the Rev. graduated from Elmhurst College in 1956 with a BA in sociology and history. In 1959, he was awarded a Bachelor's Degree in Divinity from Eden seminary in St. Louis. Ten years later the same institution awarded him a Master's Degree in Divinity.

Pastor Ratzlaff's education did not stop there. In 1970 he received an honorary Doctor of Divinity from Midwestern College where he served as a part-time instructor in religion. In 1971, he completed his work for certification as a secondary educator and followed by further studies in education at the University of South Dakota.

Previous to coming to St. Paul's

Church of Christ at Schleswig, Ia., from 1964. Prior to the post he held in Iowa, Rev. Ratzlaff spent five years at the United Church of Christ in Watertown, Wis.

Aside from duties performed for his congregation in Iowa, the Rev. Ratzlaff was an active member of the Iowa Conference of the United Church of Christ where he served as a member of the Board of Directors for six years.

He also served the Northwestern Association Advisory Council as secretary-treasurer, and as secretary of the Church and Ministry Committee. In addition, the pastor was a member of the Crawford County Health Planning Council for five years.

He is listed in the 1971 edition of Personalities of the West and Midwest, and will be listed in the 1975-76 edition of Marquis' Who's Who in Religion.

The pastor reports that he and his family enjoy being in Chelsea, and serving St. Paul church.

He and his wife, Marilyn, a certified elementary teacher, having taught for five years at Ida Grove, Ia., have five children. They are Rebecca, a student in business education at Eastern; Kurt, a freshman at Chelsea High; Ruth, a 7th grader and Laura, a 5th grader at Beach school.

A fourth daughter, Debra is married and presently resides in Iowa with her husband.

Sharing in Sunday's installation will be Mr. Lloyd Ruesik, moderator of the Ann Arbor-Jackson Association of the Michigan Conference of the United Church of Christ; Pastor Roman Reineck, Bethel UCC, Manchester; Pastor Earl Buck, St. Paul's, Saline; Pastor Lyle Weible, St. John's UCC, Jackson; and the Rev. P.H. Grabowski, pastor emeritus of St. Paul church.

A reception for Pastor and Mrs. Ratzlaff and their family will immediately follow the service.

Darryl West Wins State Championship

Darryl West concluded a very fine wrestling career at Chelsea High school last Saturday night when he won a state championship on his third attempt at the 145 lb. title.

In winning the title, Darryl joins two other Chelsea wrestlers who have state titles. They are Mike Gaken and Kerry Kargel. Both boys won titles in 1968.

Darryl proved himself to be a fine wrestler throughout the State Tournament held at East Kentwood, near Grand Rapids.

In his first match, Darryl pinned Steve Gurney of South Lyon. His second match resulted in defeat for the eventual third placer from Fruitport. The score was 11-6. In the same semi-final match, Darryl defeated Sieler of Marshall. An ironic twist, as Sieler had defeated

Darryl to win the Regional tournament with a 5-4 score.

In the finals, Darryl fought Marc Kohler of Saline. A shoulder injury received by Marc prevented him from continuing and Darryl won by default.

Darryl has made outstanding accomplishments as a wrestler at Chelsea.

As a freshman he was second in the league at 145 lbs., and has won three league titles at the same weight since.

He has gone as far as the state semi-final matches for the last three years; finishing third in the state in 1973 and '74.

Darryl's four year won-loss record is 105 wins, 24 losses and 2 draws.

Honoring more than 100 wins in his high school career, Darryl will receive a certificate from the State Coaches and Officials Association.



STATE WRESTLING CHAMPION Darryl West concluded a fine wrestling career at Chelsea High school last Saturday when he took the 145-lb. state title. Darryl had finished third in the state on two previous trips to the state tournament in the last two years.

Forensics Team Chosen for District Tournament Competition

Preparations began more than a month ago by Coach Colelius and his Forensics team to determine members from each speaking category to represent Chelsea at the District Tournament to be held on Tuesday, April 8 culminated Monday when final competition was held in the Chelsea High school Auditorium.

Coach Colelius reported that Dennis Beaton, head forensics coach, at Eastern Michigan University served as judge for the event.

Contests run every hour, resulted in some 30 area students chosen to go to the district tournament which will be held at Parma Western.

The following students were chosen for excellence in their respective speaking categories.

Placing first in Men's Oration was Brad Blazier. Second place winner was Kurt Allshouse. In the Women's Oration, Colleen Coomes placed first with Erin Headrick taking a second.

In Men's Extemporaneous, first place was given to Steve LaBarbara, with Pete Feeney second. Women's extemporaneous award-

ed a first to Brenda Shadoan, and second to Kim Brown.

In the category of serious reading, two candidates were chosen. They are first place Dale Heydlauff, and second place, Renee Schneider.

Easter Egg Hunt Set For March 29

One hundred dozen Easter eggs will be nesting in the Chelsea High School Athletic Field at 10:30 a.m. Saturday, March 29, waiting to be hunted by anxious children.

The egg hunt, sponsored annually by the Chelsea Jaycees, has invited the Easter Bunny to be on hand to award prizes to the children collecting the most eggs. Prizes will be awarded to children in four categories with each category receiving two prizes.

Prize-winning categories are as follows; pre-school to kindergarten children, first to second grade, third to fourth grade, and fifth to sixth grade.

Parents are requested to supply their children with baskets.

For story telling, first place went to Merry Hoffmeyer, and second to Bruce Stubbs.

"I Am Not A Crook," was the title given to first-place winners in the Multiple Reading category. Winners were Tom Hafer, Dave Schaible, Joel Sprague, Al Clark, Jim Marshall and John Storey.

Suzanne Morrison, Michele Blanchard, Teresa Ottoman, and Lisa MacCollum took first place in the Multiple Readings category with their rendition of "Overtones."

Rick Robbins took first, followed by Steve Jones for Radio-News-casting.

Informative Speaking winners were Dianne Burg, and Rick Haller.

Robin Schneider got some laughs and a first place for her speech in the Humorous category; with second place going to Paul Dowhal.

The entire forensics team to go together with the runners-up will go to the Brighton Invitational Tournament on Saturday, March 15.

Wrestlers Score 20 Points in State Meet

Chelsea wrestlers did well in State Tournament action this past week-end.

While the Charlotte District took quite a toll over some Chelsea wrestlers, those remaining were able to place for the State Tournament.

Dennis Bauer won a regional title. At 170 lbs., with some fine wrestling, Dennis placed over Captains Darryl West and Mike Agopian, both who placed third in the regional.

All three qualified for the state competition.

Dennis won his title by defeating the No. 2 seeded wrestler from Comstock, then in a thrilling match, won a 5-0 overtime victory

over the No. 1 seeded wrestler from Charlotte.

In the finals, Dennis defeated Paul Wooley of Jackson Northwest, 9-3.

Both Darryl and Mike lost a match each, but were able to come back through consolation to place third.

In State Tournament action, Chelsea's wrestlers did well, despite the fact that only Darryl placed with his 145 lb. state championship.

Mike Agopian was pinned in his first match, but then posted two wins over Sparta and Fruitport before losing to Jackson Northwest.

Dennis Bauer won a match with Caledonia before meeting the

(Continued on page three)

The Chelsea Standard Telephone 475-1371

Established 1871

Excellence Award By Michigan Press Association
1951-1952-1960-1964-1965-1966

Walter P. Leonard, Editor and Publisher

Published every Thursday morning at 300 North Main Street, Chelsea, Mich. 48118, and second class postage paid at Chelsea, Mich., under the Act of March 3, 1879.

Subscription Rates (Payable in Advance)	
In Michigan:	Outside Michigan:
One Year\$6.00	One Year\$8.50
Six Months\$3.50	Six Months\$4.50
Single Copies\$.20	Single Copies\$.25

MEMBER
NATIONAL NEWSPAPER
Association - Founded 1888

National Advertising Representative:
MICHIGAN NEWSPAPERS, INC.
257 Michigan Ave.
East Lansing, Mich. 48823

Uncle Lew from Lima Says:

DEAR MISTER EDITOR:

This sharp dressed young fellow stopped in the country store Saturday night to ask directions. He talked with the feller's a few minutes, and he told us he was a salesman. He said his business was off some, and he hoped the country soon could pull out of the depression it's in.

Mister Editor, I didn't say anything, but if that young feller is having a depression I'll come to his. I'm shore it's a heap nicer affair than the one we had back in 1929-33. Here he is driving around the country in a big car that's warm in winter and cool in summer, and when he has to be away from home at night he stays in a \$20 a night motel room with color TV and all the comforts of home. If he's having a depression, they must be another name for what we had.

After the young salesman left Saturday night, the feller's got to talking about everbody's idea of hard times. It was Clem Webster that allowed when folks are laid off from a plant in another town, that's a economic slowdown, when your wife is out of work that's a recession and when you ain't got a job, man, that's depression. We can read and talk about general conditions in the country and the world, but the closer we get to home the clearer the picture gets, was Clem's words.

Ed Doolittle said, Clem was right fer onct. It don't matter where we find ourselves, said Ed, we are at the center of our world. The old feller was saying more than he realized, allowed Ed, when he looked around and said he must be standing in the middle of the universe cause the sky come down at exactly the same distance all around him. Our world expands, in all directions from us, said Ed, and as it goes out it gets less important to us.

Republican Ed went on to say it looked to him like all the Democrats, employed and not, was lining up fer one job in 1978. Ed told Democrat Clem all them candidates that already is running fer President had ought to consider trying fer another job, seeing that this one is filled. Clem come right back and pointed out that if a Democrat wanted a job in Government he might as well try fer the top cause all the rest are took by appointed Republicans that lost at the polls last November. Zerk Zeke put the stopper in the political jug fer the night when he allowed that we have come to the point in this country where if a man wants to get in a race fer elected office the first thing he's got to do is resign temporary from the human race. The way everything's running, declared Zeke, no politician can suit any of the people any of the time.

General speaking, Mister Editor, the economy and the state of people depend on how you look at it. I see the place we use to call the drunk tank now is "facilities where enebriants can be detoxified in a noncriminal environment."


Yours truly,
Uncle Lew.

Gilbert Whitneys

To Be Honored at MSU Farmers' Week

A special cast bronze medallion will be awarded to the Gilbert Whitney family, 5525 Jennings Rd., Thursday, March 20 at a special reception to be held prior to the annual Farm Management Banquet. The Whitneys are one of 26 other Michigan farm families who will be honored for their co-operation of 40 or more years in the Farm record keeping system. This special program celebrates the 100th anniversary of the State Agriculture Experiment Station concept.

DID YOU KNOW?



BEAVERS

CAN SWIM UNDER WATER FOR HALF A MILE, AND CAN HOLD THEIR BREATH FOR UP TO FIFTEEN MINUTES.

HUNTERS KILLED SO MANY BEAVERS THAT BY THE LATE 1800'S THERE WERE VERY FEW LEFT IN NORTH AMERICA, SO THE U.S. AND CANADIAN GOVERNMENTS PASSED LAWS TO PROTECT THEM.

THOUSANDS OF YEARS AGO, BEAVERS WERE ABOUT 7 1/2 FEET LONG.

Noted German Physicist
WILHELM ROENTGEN
DISCOVERED X-RAYS WHILE HE WAS A PROFESSOR AT THE UNIVERSITY OF WÜRZBURG. HE WON THE FIRST NOBEL PRIZE IN PHYSICS IN 1901.

JUST REMINISCING

Items Taken from the files of The Chelsea Standard

4 Years Ago...

Thursday, March 11, 1971—

Jim Wojcicki, Chelsea's senior co-captain, was among the five SEC cagers selected to the All-League team, it was announced this week. Also receiving mention were Ron Sweeney, second team, and Howie Treado, honorable mention.

Chelsea's wrestling season ended on a high note Saturday, as sophomore Mark Montague finished second in the State Finals at Sturgis. Mark came through with three big wins before losing in the finals to senior Tom Root of Ovid-Elsie.

James Thompson, Jerry Carpenter, Ron Joseph, and Jim Collins spent four hours Saturday picking up the litter that lined the I-94 exit ramps and the M-52 entry into Chelsea. The clean-up drive on the part of the young men to stir up some clean-up action in the town.

14 Years Ago...

Thursday, March 16, 1961—

Spelling champions in Chelsea schools are David Molsinger, 6th grade champion and Janice Bush, 5th grade champion at North school, Marilyn Miller, North school championship runner-up, and Joyce Allen, North school champion, Sharyl Stoffer, South school 5th grade champion, Charles Fredette, South school championship runner-up, and Sandra White, South school champion.

New officers elected at a March 7 meeting of the Chelsea Jaycees were Daniel Maroney, president; George Winchester, Jr., first vice-president; Raymond Steinbach, second vice-president; Blaine Lyle, treasurer; Ronald Branham, secretary; and Charles Gelman, Gene Shoemaker, and Duane Layher, directors.

Two Chelsea Eagle Scouts, Victor Parks and Jack Howard, will be in Ann Arbor next Thursday, March 23, for a special recognition day program which includes an evening banquet at the Michigan Union.

Tony Keezer, 12-year-old son of Mr. and Mrs. Walter Keezer, 14228 Old US-12, Saturday night received a trophy for placing 45th

in the bantam division of the National American Junior Bowling last December. The local tournament events in which Keezer bowled his high score of 378 took place at Chelsea Lanes.

24 Years Ago...

Thursday, March 15, 1951—

Mr. and Mrs. William Birch have received a letter from their son, S-Sgt. Louis Birch, written March 5, in which he told them he was back in action in Korea, after recovering from leg wounds. He did not say when he had received the wounds but stated he had been ambushed.

Election of officers of the Chelsea Fire Department was held at the regular meeting in the fire hall Monday evening. All officers were re-elected as follows: Ted Balmer, chief; Kenneth Schanz, assistant; George Atkinson, first lieutenant; Howard Walz, second lieutenant; and James Gaken, secretary-treasurer.

Albert Pielemier and his sister, Barbara, were in Ann Arbor Thursday evening to attend a meeting of persons interested in promoting research on muscular dystrophy. Action taken at the meeting resulted in founding a Washtenaw county chapter of the Muscular Dystrophy Association.

Earning all A's at Chelsea High school during this marking period were senior Jerry Lehman; junior Jean Schweinfurth; and freshmen Sandra Baldwin and Beverly Smith.

34 Years Ago...

Thursday, March 13, 1941—

Vernon W. Downing, principal of Chelsea High school for the past three years, has accepted the position of superintendent of the Manchester school for the year 1941-1942.

The entire People's Party ticket was swept into office Monday, winning by margins ranging from 44 to more than 300. Winners were Alfred D. Mayer president; W. Arnold Steger, clerk; Gurney Hopper, treasurer; George M. Seitz, assessor; David Beach, John L. O'Hara, and Dale J. Claire, trustees; and Gertrude Daniels, library board.

New officers of the 7th grade in Chelsea public school are Leroy May, president; Arthur Paul, vice-president; Joan Shutes, secretary; Edwin Lantis, treasurer; Charles Slane, Barbara Eaton and Donna Perkins, jury; and Jane Downer, Anne Lamberton, John Wellnitz, Alfreda Marshall, Jean Eisen-

MICHIGAN MIRROR

By Elmer E. White, Secretary, Michigan Press Association

What's Going Up?

Bread, milk, sugar prices up. Margarine, up 57 percent. Baby food, up 29 percent. And so goes the list of price hikes, put out by the Labor Department and further emphasized recently by the Michigan Council of Alcohol Problems (MICAP).

In addition, the Council points to price hikes of 15 percent on beer during the past year—3 percent on whiskey.

What's it all leading up to? A Council proposal to boost taxes on beer, whiskey and cigarettes as a way of helping balance Michigan's budget.

"Who would complain seriously about paying a penny more for a bottle of beer, a penny more for a shot of whiskey and a nickel more for a pack of cigarettes?" asks a Council bulletin containing the proposal.

It's figured that such increases, recommended for a one year trial period at first, would bring in some \$100 million to state coffers.

Michigan needs an estimated \$200 million in additional revenue a year to make up for loss of

the sales tax on food and prescription drugs.

Options currently under consideration to make up that money include cutting the state's budget, boosting the state income tax or increasing the sales tax rate.

House Speaker Bobby Crim, D-Davison, also has mentioned the prospect of deficit spending, now outlawed by Michigan's constitution. Foes of that idea contend it might easily lead to a permanent deficit, with the state never quite catching up with its bills.

Campaign Reform Alive

Voters may yet have a chance to express their feelings about how much political candidates should spend on election campaigns.

Campaign reform proposals, which didn't get too far in the legislature last year, still are being talked about in Lansing. But if there's no "dramatic action" on those ideas soon, Michigan Common Cause plans some action of its own. The group says it will begin a petition drive to put campaign reform items on the 1976 ballot if lawmakers fail to act decisively within a few weeks.

The fellow who directed the successful campaign to put repeal of the state food and drug taxes on last year's ballot, Douglas Ross, is in charge of the Common Cause effort.

"The only way we would allow the legislature to pre-empt the initiative drive would be if they move all four of these bills (proposed by Common Cause) as an individual package," Ross says.

Those proposed bills would: —Limit the amounts that candidates for state office could spend and that individuals and organizations could contribute in campaigns.

—Require disclosure of personal financial interests by candidates and public officials.

—Require registration and detailed reporting of expenditures by lobbyists.

—Set up a political ethics commission to enforce related laws.

What About Lawns?

The fertilizer crisis of last year season prompts a Democratic state lawmaker to see ways of averting a similar situation this year.

Rep. David Bonior of Mount Clemens wants to ban the sale of commercial fertilizer for uses other than in the production of food for human consumption, food for consumption by domesticated animals, and in production of fiber of cellulose for human use.

"In view of the millions of people who are starving in various parts of the world, it seems inhumane that we in Michigan, and around the country, use billions of tons of fertilizer for home lawns when the supply is becoming less available and more expensive," he says.

"Lawns can be maintained without the use of fertilizer. Farm lands cannot continue to be productive without fertilization."

BITTIT

'Twas a bad January for snow-mobilers and ice fishermen in southern lower Michigan, according to the Department of Natural Resources.

Legion Post Plans Dinner, Dance as Birthday Party

The Dexter post of the American Legion is celebrating the Legion's 50th birthday on Saturday, March 15 at the Legion Home.

A pot-luck dinner will begin at 7 p.m. followed by dancing for members and their guests.

Those attending the party are asked to bring a dish to pass and their own table service.

Football has been an organized varsity sport at Eastern Michigan University since 1890.

ROCKCRETE PRODUCTS

TRANSIT - MIXED CONCRETE
WASHED SAND & STONE - ROAD GRAVEL
LIMESTONE
Rite-Way Mixers
475-2848
6991 CHELSEA-MANCHESTER RD., MANCHESTER

BUMPING and PAINTING

FREE ESTIMATES - ALL MAKES
Get the Best for Less!
FRANK GROHS CHEVROLET
Phone 426-4677 Dexter, Mich.

CRIBLEY DRILLING, INC.

OF DEXTER
Announces
A WINTER SPECIAL
Check with us on our conditions of well drilling NOW until MARCH 21, 1975

A 4-inch WELL - submersible pump and pitless adapter installed by us WILL GET YOU FREE a 202 WELL X TROL PRESSURE TANK
(List price \$82.70)

CALL 426-4720 or COME OUT TO
8380 Dexter-Chelsea Rd.
Dexter

ST. PATRICK'S MARCH SPECIALS

HOMOGENIZED
MILK . . . gal. **99¢**

REGULAR
GAS . . . gal. **49.9¢**

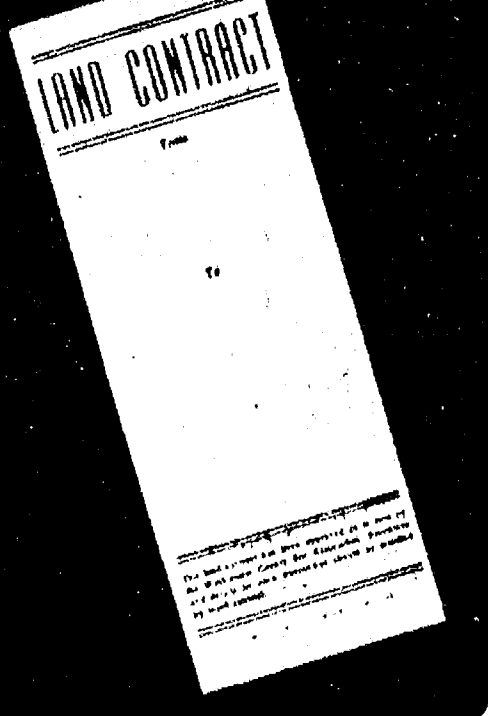
Green BEER gal. **??**

St. Patrick's Party Saturday, March 15. Live Entertainment.

INVERNESS INN

Since 1907 13996 North Territorial Rd. Ph. 475-1515
BANQUET and PARTY FACILITIES

REFINANCE YOUR LIMITED TERM LAND CONTRACT



- Mortgage rates are the lowest in many months (Economists predict rates to increase sharply by year-end)
- Receive Title to your property
- Lower monthly payments available in many cases

Bring your land contract to any of the nine offices of Ann Arbor Federal Savings for refinancing or call 769-8300 for information.

ANN ARBOR FEDERAL SAVINGS

9 Offices: Ann Arbor, Chelsea, Dexter, Manchester, Ypsilanti and Brighton.

Founded 1890
Member FSLIC



ABA NETS TEAM lines up like this: in front, from left, are David Lane, Brent Martin, Coach Paul Wood, Brian Ackley and Ken Patrick. Not in back, Eric Schaffner, and Steve Ramsey. In back, present for photo was Doug Pagliarini.

IPSCO Maintains Perfect Record In Men's Recreation Basketball

IPSCO continues to triumph with a perfect season in the Men's Recreation Basketball action. In Monday night's game IPSCO scored 57 points for a 12 point win over Brown Drug's. Leading scorers for the game were C. Farley with 17 points, and B. Davis following with 12.

In other contests Monday, 3-D Sales lost to Mark IV Lounge, 50-37. J. Lixey was the high scorer for that game hitting 14 points for the Lounge.

Pinckney clobbered Chelsea Lumber with a 75-55 game score. Four double-figure scorers, D. Douglas, 19; T. Breneman, 16; K. Douglas, 14; and S. Bishop, 12, hit to win Monday's contest. Double-figure scorers for Chelsea Lumber were L. Lande, 16; D. Garrett, 12; and B. Murphy, 10. Games played last Wednesday, March 5, again found IPSCO in the lead with a 72-54 score to beat Dexter Rabble. C. Farley, J. Cameron, and A. Farley all hit with scores of 12, 10, and 10, respectively. Rabble's R. Wagner pushed to win with a high double score of 24.

New Neighbors Guests At Welcoming Party

Welcoming her new neighbors, Mrs. Carol Vichinsky, and Mrs. Lois Schutte and son, was Mrs. J. Hopkins.

Mrs. Hopkins invited neighbors to join her in the welcoming held at her home on Thursday morning, March 5.

Guests included Mrs. Iva Barton, Mrs. Shirley Bauer, and her son; Mrs. Sarah Shanahan, Mrs. Nettie Hall, and Mrs. Doris Fuhrmann. Other guests were Mrs. Marilyn Lewis, Mrs. Jodi Platt, Mrs. Jean French, Mrs. Shirley Lancaster, Mrs. Erma Niebauer and daughter; Mrs. Carol Schultz and son; and Mrs. Mary Clark.

MEN'S RECREATION BASKETBALL

Games for Week of March 13-19

Thursday, March 13—
3-D Sales and Service vs. Dexter Rabble.
Chelsea Lumber vs. Rockwell International.
Chelsea State Bank vs. Mark IV Lounge.

Monday, March 17—
D & D Lanes Stockbridge vs. Brown Drug.
Southern Boy Take-Out vs. Dunlavy Farms.
Independents vs. Heydlauff's.

Wednesday, March 19—
Tournaments

Saline Jaycees Seeking Entries For Band Battle

The Saline Jaycees are seeking entrants for their 9th annual Band Battle '75. Billed as "Michigan's Finest Rock Band Competition" the contest offers prizes valued at more than \$2,000 to the winners. The competition is open to all groups, whose members are between 14 and 19 years of age. Entry forms may be obtained at the Ann Arbor Music Mart or by calling Ron Cundiff at Saline 429-4835.

Preliminary contests will be held March 22 and 29. The finals are set for April 5. The competition is held at the Farm Council Building on Saline-Ann Arbor Rd. Dexter has been represented in almost all of the eight previous Band Battles. Last year's entry was "Oblivion."



DEN 1, PACK 415—

Cub Scouts of Den 1, Pack 415 met Thursday, March 6. We opened with the den cheer. Each person told what he thought of the Blue and Gold Banquet. The entertainers there were some Indiana dancers. They were great!

We made an Easter mobile with chickens and eggs. Good deeds were done by Jack Wirth, James Pearson, Kevin Colombo, Jerry Hammerschmidt, and Greg Markle.

Robbie England was a guest. We closed with our flag ceremony. Jack Wirth brought treats. Kevin Colombo, scribe.

Snowmobilers Organized into Disaster Team

All Washtenaw county and parts of Livingston county have been organized into a Red Cross County-Wide Disaster Team with 14 snowmobile units among those available and capable of handling any local disaster resulting from weather conditions.

The recent heavy snowstorms and resulting stranded motorists instigated the new Red Cross program.

Assisting in organizing the program is Red Cross Director Don Peak, who heads the volunteer course of snowmobile units, and Chuck Moler, Dexter fireman, who is the instructor for the emergency training.

The snowmobile units are trained in emergency first aid and will be used to bring stranded or hurt victims into designated Red Cross shelters during any emergency. Dexter High School is one of the shelters.

The Inverness Snowmobile Club is one of the units which received training last week at the Inverness Country Club.

Instructor Moler said the training consists of a film demonstrating four ways to stop bleeding; mouth-to-mouth resuscitation; how to stop choking; bandages; splinting; poison control; heat exhaustion; heart attack; fainting; cold exposure such as frostbite; and improvising emergency equipment.

Participation of the volunteers following the movie is aided by Moler's 16-year-old son, Charlie, and Kathy Jensen of Ann Arbor.

Girl Scout Week ...

(Continued from page one)

special consultants. Chelsea has approximately 75 registered Adult Girl Scouts. This year's Troop Leaders are: No. 84, Mrs. Janet Hegadorn and Mrs. Helen Bulick; No. 145, Mrs. Nadine Kock and Mrs. Elsie Heller; No. 169, Mrs. Jeanene Riemschneider and Mrs. Lois Garman; No. 247, Mrs. Lenore Matloff and Mrs. Karen Galbraith; No. 676, Mrs. Carol Machesky and Mrs. Sue Nix; new Brownie troop, Mrs. Vickie Favers and Mrs. Penny Smedley; No. 58, Mrs. Kathy King and Mrs. Marge Thompson; No. 82, Mrs. Beverly Heilmann and Mrs. Betty Check; No. 442, Mrs. Sharon Eisenbeiser and Mrs. Pat Wilson; No. 689, Mrs. Carol Hoffman and Mrs. Pat Conner and Mrs. Mary Adillo; No. 98, Mrs. Sandy Schmunk; No. 47 Mrs. Linda Montgomery.

Girl Scout Week will be topped off by the annual Father-Daughter Banquet on Sunday evening, March 16. The banquet will be held at Chelsea High School and will begin at 6:30 p.m. with a planned potluck dinner, followed by square dancing with Wendell Abbott from Stockbridge.

Car Stolen from Drive

Ray E. Knickerbocker of 228 E. North St., reported to police that his light blue '62 Chevy II was stolen while parked in his driveway around 10 p.m. March 8.

Police later found the car parked on Sycamore Dr., at 1:30 a.m. on March 10, notified Knickerbocker and advised him to pick the vehicle up. Further investigation of the theft is pending.

The Department of Music has been an integral part of Eastern Michigan University since 1854, five years after the school was founded.

Fuller Brush Products Special This Week

Pre-Laundry Stain Spray
Kitchen Cleaner & Wax
Oven Cleaner
Oven Spray
Wardrobe Freshener
Perfumed Moth Deodorant Blocks
Nylon Bristlecomb Brush
Golden Accent Mist Cologne

Call 426-3387

Letters to the Editor

To The Editor:

In response to a letter by Ethel Pfeifer in your March 6 edition, I can only say that Mrs. Pfeifer should check out her story before alerting the citizens to some possible disaster due to the building project in her area.

Dr. Michael Papo has been a resident of Chelsea since 1958 and is not some fly-by-night developer who comes into a community for his own gain and who has no regard to the community's need. It is due entirely to his genius and hard work that Chelsea has a very highly regarded Medical Center which is a model for any town. If Mrs. Pfeifer would care to tour the Medical Center, I am sure that she would see the type of development in which Dr. Papo is engaged.

I am sure that the older residents of Chelsea can remember when the site of the Medical Center was known as the "Peat Marsh" in which fires smoldered all winter. The whole area was only good for hunting rabbits. Now, it is a show place of Chelsea and dispenses some of the finest medical services found in Michigan. It also offers employment to approximately 300 people who would otherwise have to seek employment in other areas. Why would Dr. Papo develop any other site in a less productive or attractive manner?

I think that the people of Chelsea should support Dr. Papo in his endeavors to complete the 4th stage of the Chelsea Medical Center development, of which the Planning Commission would not

approve, I am sure, if it would in any way damage the community. The 4th stage development is residences for senior citizens which is needed here. It was attempted on the Burg property last year. The hearing for this turned out to be nothing but a filibustering sham sponsored by some other development interests in town.

I hope that the citizens who appreciate and who would benefit by this endeavor will turn out in strength at this time to voice their opinion and give their support to this long over-due development.

I also think that Dr. Papo should be given a vote of thanks for all the efforts and money which he has poured into this community.

Mrs. Bernadine Hill.

Wrestling Tourney

(Continued from page one)

eventual second-place finisher from Mt. Pleasant, Dennis lost by a very close 2-1 match to Mt. Pleasant, followed by a loss in a consolation match to Sturgis.

In the Regional Tournament, Chelsea finished fourth.

Twenty points were scored in the state finals which will place Chelsea somewhere among the top 20 in the state.

VEHICLE FIRES

Fire Department services associated with motor vehicle fires and fire related incidents cost the American public \$350 million dollars in 1973. That amount was more than 10 percent of all fire-fighting costs incurred in the United States that year.

The Robins Are Coming! The Robins Are Coming!

And So Are

Some New Gardening Books.

Village Books of Chelsea

Alan and Jaynor Johnston

105 1/2 S. MAIN ST.

PH. 475-9260

Jiffy market

Big Enough To

Serve You . . . Small Enough To Know You!

CORNER OF SIBLEY & WERKNER RDS. . . CHELSEA, MICH.

PHONE 475-1701

HOURS: Sun. thru Fri., 8 to 8
Sat., 8 to 10

WE ACCEPT
U.S.D.A. FOOD STAMPS

SALE PRICES EFFECTIVE
Thurs., Mar. 13 thru Sun., Mar. 16

BEEF FRONT
QUARTER

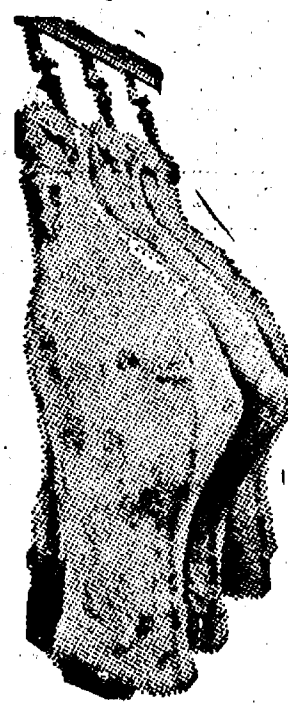


U.S.D.A.
CHOICE
BEEF

SIDES - FRONTS - HINDS
WHOLE RIBS - WHOLE LOINS

CUSTOM CUTTING - WRAPPING - FREEZING
QUICK SERVICE ON BUTCHERING
YOUR BEEF OR OURS

BEEF HIND
QUARTER



U.S.D.A. GRADE CHOICE
SPECIAL!!

FRONT
QUARTER 56¢ lb. HANGING
WEIGHT

Plus 12c lb. for Cutting,
Freezing, Wrapping

YOUNG LEAN, TENDER

WHOLE PORK LOINS 12 to 18-lb. Avg. Per Lb. 89¢

LONGHORN
COLBY
CHEESE

98¢

PESCHKE'S
Bologna

69¢

FRESH
HAMBURGER

79¢

Kleen-Maid
WHITE
BREAD

1 1/4-Lb.
Loaf

39¢

Farm Maid
HOMOGENIZED
MILK

Gal.

\$1.27

PEPSI-
COLA

12-oz Cans

8 pac \$1.49

CIGARETTES
ALL BRANDS
AND SIZES

\$3.79

MARATHON GAS

REGULAR

PREMIUM

LEAD-FREE

49.9 53.9 52.9

Incl. All Taxes

Incl. All Taxes

Incl. All Taxes

Cold Weather Gas You Can DEPEND ON

Gas Pumps and Store Open Sun. thru Fri., 8-8; Sat., 8-10 - Daily and Sunday Papers



Introducing ...



JOCK CRAWFORD

It is with a great deal of pleasure that we welcome Jock to our Sales Force. Jock, who is 28 years old, graduated from Chelsea High School in 1964, spent 4 years in the United States Air Force and earned a Bachelor of Science Degree from Eastern Michigan University in 1972. He and his wife, the former Sandra Johnson, reside at 126 Wilkinson St.

Jock brings with him a solid background in selling and welcomes the opportunity to assist you in fulfilling your transportation needs. Drop in to say "Hello!"



The Happyface Place®
We're in business to make you smile

62 Years in Chelsea, Since April 1912

Thank You...

Thanks to you, our fellow citizens, who came out to cast your ballot in support of the Independent candidates for election to Village office. Your vote of confidence in Independent candidates is very much appreciated.

Independent Party



From Wilfred Beaver, Sparta, Wis.: In the not too long ago refrigeration was furnished to city and town dwellers by the ice man. His job was an essential one.

City dwellers, living mostly in three- and four-story apartment buildings would have cards with four different numbers on them—indicating how many pounds of ice one wanted. The ice man would chip off that weight from his large slab. The ice man drove a wagon which was lined with old burlap sacks, thus keeping the ice cool.

The ice man would wear woolen shirts during his workday. He also had a leather vest—reinforced over the shoulder he used the most in carrying the ice. His diet of garlic, greens, and home-made red wine kept his body in fine physical shape. Alas, the electric refrigerator eventually forced him out of work.

FORGOT TO SWIM

One person was so absent-minded he drowned—after falling in the lake he forgot how good a swimmer he was!

Workshop To Project Cash Grain Prices

East Lansing—If you raise corn, wheat or soybeans, you can work with Michigan State University agricultural economists to project prices and evaluate the implications of those prices during a March 19 afternoon workshop during Farmers' Week at MSU.

Using expected prices, projected yields and costs, MSU Ag Economists Roy Black, George Dike and Henry Larzelere will help you to plan profitable crop mixes. They will also consider the effect of planting and harvest dates and limited fertilizer supplies.

The session is slated for 1 p.m. March 19 in Room 104 A & B of MSU's Kellogg Center for Continuing Education.

Obtain a free copy of the Farmers' Week program at your county extension office, or write: MSU Bulletin Office, Box 231, East Lansing 48824.

UNEMPLOYMENT

"Substantial Unemployment" means an area has a jobless rate of six percent or more, discounting seasonal or temporary factors, with the rate expected to continue for at least two or more months.

+ Services in Our Churches +

CONGREGATIONAL CHURCH
(United Church of Christ)
The Rev. Carl Schwarm, Pastor
Sunday, March 18—
9:45 a.m.—Choir practice.
10:30 a.m.—Sunday school and worship service. Presentation Sunday. Coffee hour. Christian education.
Monday, March 19—
7:30 p.m.—Church Council.
Wednesday, March 19—
6:30 p.m.—Congregational potluck dinner.
7:30 p.m.—Lenten Service and movie, "Dawn of Victory."
Thursday, March 20—
7:30 p.m.—Esther Chapter.

FIRST UNITED METHODIST CHURCH
The Rev. Clive Dickens, Pastor
Thursday, March 13—
9:00 a.m.—United Methodist Women Executive Committee will meet at the home of Mrs. Joanne Weber.
6:30 p.m.—Weight Watchers will meet in the Social Center of the church.
Sunday, March 16—
10:00 a.m.—Worship service (Nursery provided).
10:20 a.m.—Church school (kindergarten through 6th grade).
11:00 a.m.—Coffee and Punch Hour.
11:15 a.m.—Junior-senior high and adult church school.
Tuesday, March 18—
7:30 p.m.—Wesleyan Circle will meet at the home of Miss Shirley Smith.
Wednesday, March 19—
9:00 a.m.—Sarah Circle will meet at the home of Mrs. Shirley Snyder.
1:00 p.m.—Ruth Circle will meet at the Crippen Building.
1:00 p.m.—Phoebe Circle will meet at the home of Mrs. Daniel Harris.
3:45 p.m.—KINDER Choir.
4:15 p.m.—Glory Choir.
4:45 p.m.—Praise Choir.
7:00 p.m.—Lenten Service. Choir program "A Service of Psalms."
8:00 p.m.—Chancel Choir.

Thursday, March 20—
9:00 a.m.—Elizabeth Circle will meet at the home of Mrs. Pam Lewis.
6:30 p.m.—Weight Watchers will meet in the Social Center of the church.

ST. THOMAS EVANGELICAL LUTHERAN
Ellsworth and Haab Rds.
The Rev. Jerome Dykstra, Pastor
Thursday, March 13—
8:00 p.m.—Worship Committee meeting at Alvin Weidmayer's.
Friday, March 14—
5:00 p.m.—7:00 p.m.—Lutheran Children's Friend spaghetti supper and bake sale at St. Paul's Lutheran church in Ann Arbor.
Sunday, March 16—
9:30 a.m.—Sunday school and Bible class.
10:45 a.m.—Worship with Holy Communion.
8:00 p.m.—Lenten service.
Tuesday, March 18—
4:30 p.m.—Confirmation class.
8:00 p.m.—Choir rehearsal.
Wednesday, March 19—
10:00 a.m.—Bible study.

GREGORY BAPTIST CHURCH
The Rev. Paul White, Pastor
Every Sunday—
10:00 a.m.—Worship.
11:10 a.m.—Sunday school.
7:00 p.m.—Evening worship service.
7:30 p.m.—Thursday mid-week service.

ZION LUTHERAN CHURCH
Corner of Fletcher, Waters Rds.
The Rev. John R. Morris, Pastor
7:00 p.m.—Evangelistic service.
Thursday, March 13—
9:00 a.m.—Church Pastors meet here.
Saturday, March 15—
9:00 a.m.—8th grade youth instruction.
Sunday, March 16—
9:00 a.m.—Sunday school.
10:15 a.m.—Worship service.
7:00 p.m.—Luther League.
Monday, March 17—
8:00 p.m.—Senior choir.
Tuesday, March 18—
10:00 a.m.—Activity-Sewing Day.
12:00 p.m.—Noon potluck.
Wednesday, March 19—
7:30 p.m.—8th Lenten devotional.

OUR SAVIOR LUTHERAN CHURCH
1515 S. Main, Chelsea
The Rev. William H. Keller, Pastor
Sunday, March 9—
9:00 a.m.—Sunday school and Bible classes.
10:30 a.m.—Worship service.
7:30 p.m.—Parent Effectiveness Meeting, open to public.
Tuesday, March 11—
9:00-11:30 a.m.—Pre-school story hour.
7:30 p.m.—Adult class.
9:00 p.m.—Christian Education Committee.
Wednesday, March 12—
4:00-5:30 p.m.—Confirmation classes.
7:45 p.m.—Mid-week Lenten meditation.
8:45 p.m.—Choir.

ST. BARNABAS EPISCOPAL CHURCH
20550 Old US-12
The Rev. Jerrold Beaumont
B.S.P., vicar
Rectory 475-2003
Church 475-8818
Every Sunday—
10:00 a.m.—Holy Communion, first, third, and fifth Sundays.
10:00 a.m.—Morning Prayer, second and fourth Sundays.
First Wednesday of each month—Bishops Committee.
Each Wednesday in Lent—8:00 p.m.—Holy Eucharist.

FIRST ASSEMBLY OF GOD
The Rev. Thode B. Thodeson
Pastor
Every Sunday—
9:45 a.m.—Sunday school.
11:00 a.m.—Worship service.
7:00 p.m.—Midweek services.
Every Wednesday—
7:00 p.m.—Christ's Ambassadors.
Every Friday—
1:00 p.m.—Ladies Bible study.

IMMANUEL BIBLE CHURCH
145 E. Summit St.
The Rev. LeRoy Johnson, Pastor
Every Sunday—
9:45 a.m.—Sunday school, nursery provided.
11:00 a.m.—Morning worship, nursery provided.
7:00 p.m.—Evening worship.
Every Wednesday—
7:30 p.m.—Family hour, prayer meeting, and Bible study.

ST. JACOB EVANGELICAL LUTHERAN CHURCH
12501 Rietmiller Rd., Grass Lake
The Rev. Andrew Bloom, Pastor
Every Sunday—
9:00 a.m.—Worship service.
10:15 a.m.—Divine services.
SALEM GROVE UNITED METHODIST CHURCH
3320 Notten Rd.
The Rev. Richard C. Stoddard, Pastor
Every Sunday—
9:30 a.m.—Sunday school.
Every Sunday—
8:45 a.m.—Worship service.
10:30 a.m.—Worship service.

ST. JOHN'S (UNITED CHURCH OF CHRIST)
Rogers Corners
The Rev. Carl Asher, Pastor
Every Sunday—
9:30 a.m.—Sunday school.
10:30 a.m.—Worship service.
BETHEL EVANGELICAL AND REFORMED CHURCH
(United Church of Christ)
Freedom Township
The Rev. Roman A. Reineck, Pastor
Every Sunday—
10:00 a.m.—Worship service.

ST. PAUL UNITED CHURCH OF CHRIST
The Rev. R. J. Ratliff, Pastor
Thursday, March 13—
1:30 p.m.—Prayer group.
3:00 p.m.—AA-J Association Educational Building.
Saturday, March 15—
8:30 a.m.—Confirmation. Field trip to Evangelical Home in Detroit.
3:00 p.m.—Staff meeting at the parsonage.
Sunday, March 16—
9:00 a.m.—Church school.
10:30 a.m.—Church school.
10:30 a.m.—Worship service.
3:30 p.m.—Installation of Pastor Ratliff and Church Council, followed by a reception.
Monday, March 17—
7:30 p.m.—Church school teachers.
Tuesday, March 18—
1:00 p.m.—Needle and Thread.
8:30 p.m.—XYZ's.
8:00 p.m.—Council.
Wednesday, March 19—
1:00 p.m.—World-wide.
3:30 p.m.—Junior Choir.
8:00 p.m.—Chancel.

ST. MARY CATHOLIC CHURCH
The Rev. Fr. David Philip Dupuis
Pastor
Mass Schedule
Every Saturday—
4:00-5:00 p.m.—Confessions.
7:00 p.m.—Mass.
Immediately after 7 p.m. Mass—Confession.
Every Sunday—
Winter schedule
8:00, 10:00, 12:00 noon—Mass.
Summer schedule
7:00, 9:00, 11:00 a.m.—Mass.

CHURCH OF JESUS CHRIST OF LATTER-DAY SAINTS
Meetings at
St. Barnabas Episcopal Church
20500 Old US-12
Every Sunday—
11:00 a.m.—Priesthood meeting.
12:30 p.m.—Sunday school.
5:30 p.m.—Sacrament meeting.

METHODIST HOME CHAPEL
The Rev. R. L. Clemens, Pastor
Every Sunday—
8:45 a.m.—Worship service.

WATERLOO FIRST UNITED METHODIST
Parks and Territorial Rds.
The Rev. Altha Barnes, Pastor
Every Sunday—
9:15 a.m.—Morning worship.
10:15 a.m.—Sunday school.

WATERLOO VILLAGE UNITED METHODIST CHURCH
8118 Washington St.
The Rev. Altha Barnes, Pastor
Every Sunday—
10:00 a.m.—Sunday school.
11:15 a.m.—Worship service.

ST. JOHN'S EVANGELICAL AND REFORMED CHURCH
(United Church of Christ)
Francisco
The Rev. Virgil King, Pastor.
Every Sunday—
9:30 a.m.—Sunday school and catechism class.
10:30 a.m.—Worship service.

CHURCH OF CHRIST
13681 Old US-12, East
David A. Rushlow
Every Sunday—
10:00 a.m.—Church school.
11:00 a.m.—Worship service.
Nursery will be available.
8:00 p.m.—Worship service.
Every Wednesday—
7:30 p.m.—Bible study.

CHELSEA MEDICAL CENTER
Every Other Wednesday
1:30 p.m.—Worship service.

Protect Your Car
Get a
DEVIL DOG
alarm system
Only \$9.95
(10 year guaranteed)
Herschel Langston
426-3591 - 475-8104

FARMERS' SUPPLY CO.
PHONE 475-1777

Faster gains from better FEEDS

Calves got growing and gaining faster, on our balanced, fortified Calf Feed... enriched with needed vitamins, minerals.

Complete feeding rations for all your livestock, poultry.

RURAL TOWNS FACE CHANGE
Rural communities can expect dramatic changes if they are hit by the trend of older people moving from urban to rural areas. According to Michigan State University scientists, these population shifts raise average ages in rural towns, change attitudes on land development, and strain community services. The experts have developed a list of potential problems and have formulated information to help community leaders cope with them.

FIRST UNITED PRESBYTERIAN CHURCH
Unadilla
The Rev. T. H. Liang, Pastor
Every Sunday—
9:45 a.m.—Sunday school.
11:00 a.m.—Worship service.

NORTH LAKE UNITED METHODIST CHURCH
The Rev. David Stiles, Pastor
Every Sunday—
10:00 a.m.—Worship service, nursery available.
11:15 a.m.—Sunday school.
Every Tuesday—
7:00 p.m.—Adult Choir.
Every Wednesday—
4:15 p.m.—Children's Choir.

NORTH SHARON BIBLE CHURCH
Sylvan and Washburne Rds.
The Rev. William Enslen, Pastor
Every Sunday—
10:00 a.m.—Sunday school. (Nursery will be available.) Junior church classes.
11:00 a.m.—Worship service.
6:00 p.m.—Senior High Youth meeting. Youth Choir.
7:00 p.m.—Evening worship services. (Nursery available.)
All services interpreted for the deaf.
Every Wednesday—
7:00 p.m.—Bible study and prayer meeting. (Nursery available.)
Bus transportation available: 428-7222.

CHELSEA BAPTIST CHURCH
377 Wilkinson St.
The Rev. James Stacey, Pastor
Every Sunday—
9:45 a.m.—Sunday school.
11:00 a.m.—Worship service.
Nursery care provided during all services.
6:00 p.m.—Junior and Senior Baptist Youth Fellowship.
7:00 p.m.—Evening service.
Every Wednesday—
7:00 p.m.—Bible study and prayer meeting.

FIRST CHURCH OF CHRIST SCIENTIST
1883 Washtenaw Ave., Ann Arbor
Every Sunday—
10:30 a.m.—Sunday school, morning service.

BAHA'I FIRESIDE
Every Thursday—
8:00 p.m.—At the home of Toby Peterson, 705 S. Main St. Anyone wishing to learn about the Baha'i faith is welcome.

Defeat the Devil Day Slated at N. Sharon Church

North Sharon Bible church has challenged the Devil. On March 16, they're expecting 667 in church—the Devil's number is 666. Talking to Pastor Bill Enslen and the congregation at North Sharon, they're expecting trouble. As Pastor Enslen says "when you have challenged the Devil you don't suspect trouble, you expect it. But, with the grace of God, we're also expecting 667 in church."

To add to the possibility of calamity, they are bringing Natasha, a 250-lb. female lion, to church. Why? Because they want to "Roar for the Lord," and if they can find a volunteer to dress in a red suit, wear a tail, and carry a pitch fork, they would like very much to feed him to Natasha, but a volunteer they don't have. Also, they have 500 kites, one for every boy and girl who comes.

Everyone is invited to come on March 16 and on every Sunday.

Popular Speakers on Indian Affairs Coming To Waterloo Church

The popular speakers on Indian Affairs, Dr. and Mrs. Richard Church, will be at the Waterloo Village United Methodist church Friday, March 14 at 1 p.m. He serves as a pharmacist for the United States Health Service in Shiprock, N. M. Although Dr. Church is a Cherokee Native American he is well acquainted with the Navajo Native Americans of the Southwestern United States. Mary Church, his wife, also a Native American, will be here with him. Both are graduates of the University of Michigan. Anyone interested in hearing these young Native Americans speak is invited to attend.

February Traffic Death Toll Shows 20% Decrease

February traffic deaths in Michigan numbered 89, which was 23 or about 20 percent less than the count of 112 for that month last year, according to provisional figures of the State Police traffic division.

The count was the lowest for February since 1962 when 70 deaths were recorded. February's average was 139 for the five-year period 1970-74. Record high for the month was 181 in 1972 while the all-time low was 51 in wartime 1943.

The February deaths brought the accumulated total for the two months so far this year to 205. This was 18 or about eight percent less than 223 counted in the same period in 1974. Reports of delayed deaths charged back to accidents that occurred in February and January will increase somewhat the totals for February and the accumulated period.

MARCH SPECIALS:

LITTLE ROOSTER RESTAURANT

Phone 426-8668 11485 N. Territorial Rd.
THURSDAY, 5 to 9 p.m. - SPAGHETTI DINNER
ALL YOU CAN EAT - \$2.35 per person

FRIDAY, 5 to 9 p.m. - OCEAN PERCH DINNER
All the Perch You Can Eat - \$2.45 per person

In addition to our regular menu, we are now serving our own
HOME-MADE PIZZAS after 5 p.m.

OPEN Tues., Wed., Thurs., 4 to 10 p.m., Fri., Sat., 11 a.m. to 10 p.m.
Sun., 11 a.m. to 9 p.m. Closed Mondays.

KRESGE'S

EARLY SPRING SAVINGS

Thurs., Fri., Sat., Sun., March 13-16 Only

KRESGE COUPON
PRE-TEEN JEANS
Our Reg. \$2.96 **\$1.97**

KRESGE COUPON
ENAMEL EARRINGS
Our Reg. 77c **2 for \$1**

KRESGE COUPON
POLESTER DOUBLE KNIT MATERIAL
Our Reg. \$2.22 & \$2.66 **\$1.77 yd.**

KRESGE COUPON
LITTLE GIRLS PANT SUITS
Our Reg. \$6.97 **\$5.44**

KRESGE COUPON
MISSES POLYESTER
SCREEN PRINT TOPS (White)
Our Reg. \$4.57 **\$3.44**

KRESGE COUPON
MISSES DORM SHIRTS
Our Reg. \$2.99 **\$1.97**

KRESGE COUPON
MISSES POLYESTER
SCREEN PRINT TOPS (Tinted)
Our Reg. \$5.57 **\$4.44**

KRESGE COUPON
Men's Colored TUBE SOCKS
Our Reg. 97c **74c**

OPEN 9:30 to 9 DAILY; 12 to 5 SUNDAY
KRESGE'S WESTGATE ONLY
2511 JACKSON RD., ANN ARBOR



INVITATIONS or ANNOUNCEMENTS...

Let us provide you with the very finest printed or engraved invitations and announcements. Make certain that your wedding stationery is of top quality and conforms to correct social requirements. We can advise you on these important details.

THE CHELSEA STANDARD
Social Printing Department
300 NORTH MAIN ST. PHONE 475-1371

Club and Social Activities

KINDER KLUB

After attending a fashion show sponsored by the Woman's Club of Chelsea, Kinder Klub members met at the home of Mrs. Nadine Koch.

It was reported that nearly all the members will be attending the 1975 Program Planning meeting in Jackson on April 5.

The club decided to have their Husband's Night March 22 at the home of Veretta Whitaker.

The next meeting of the club will be on April 8 at the home of Mrs. Jeannie Hafner. Topic for that evening's discussion will be "Self-Understanding." Guests are welcome.

BETA SIGMA PHI

A program on "Understanding Nature," was the topic of the March 3 meeting of the Beta Sigma Phi chapter of Xi Gamma Mu at the home of Mary Grifka. Jan Longworth delivered the program, asking members to bring a recycling idea to the next meeting.

Members decided to hold the Founders Day dinner at Webbers Inn on April 28.

Members were reminded to bring an Easter card for their forgotten child at the Plymouth State Home.

The next meeting of Beta Sigma Phi will be held on March 17, at the home of Jan Longworth.

BABY SHOWER

Mrs. Tom Bader of Mason was hostess Sunday afternoon, Feb. 23 at a baby shower given in her home honoring Mrs. Robert Runyan of Bushnell, Ill.

Mrs. Runyan is the daughter of former Chelsea residents Mr. and Mrs. Walter Bauer. Mr. and Mrs. Bauer now reside in Williamston. Sunday's guests included Mrs. Robert Robbins and daughters; Mrs. Martin Straub, and Denise; Mrs. George Bauer, Mrs. Irene Proctor, Lori, Julie, Janis, and Barbara Proctor.

VIVIANE WOODARD

GOSMETICS

475-8785

Dorothy Ortbring, Director

CLEARANCE

Up to 70% Reduction on all winter merchandise

DRESSES - PANT SUITS - ENSEMBLES

Use your BankAmericard or Master Charge

KAREN'S BOUTIQUE

118 S. MAIN ST.

PHONE 475-2678

The Special Gift for the Special Occasion

Keepsake
REGISTERED DIAMOND RINGS

SANTA ROSA
HIBISCUS
WED. RING
IMPRESS
HERITAGE
HOLTON
MOHAWK
WED. RING

When you give a Keepsake, you make the occasion doubly special, because there is no finer diamond ring. Keepsake's famous Guarantee is your assurance of perfect clarity, fine white color and precise cut.

WINANS JEWELRY

YOUR AUTHORIZED KEEPSAKE JEWELER

Chelsea Models Feature Spring, Summer Clothing in Fashion Show

Modern Mothers together with Chelsea area study club members were invited to "Swing into Spring," with a fashion show co-ordinated by the Chelsea Woman's Club.

Over 150 guests attended the show which was held Tuesday evening at 8 p.m. in the Chelsea High School cafeteria.

Karen Johnson, owner-manager of Karen's Boutique served as Master of Ceremonies, and provided the models, Mrs. Robert German, Mrs. Frederic Leeman, Mrs. William Scholz, Mrs. Patrick Turcott, and Lisa Allhouse, with an array of spring-summer clothing from her Main Street Boutique.

Bridal Gowns

Sought for Benefit Fashion Show

"A Kaleidoscope of Chelsea Brides," including the modeling of bridal gowns from the turn of the century to the present is scheduled for Saturday, May 3, at Chelsea High School to benefit the local chapter of the American Cancer Society.

Mrs. George Palmer, chairman of the event, is attempting to locate bridal gowns and dresses worn by women who are currently Chelsea residents. However, Mrs. Palmer stipulated that the gowns need not have been worn at a wedding within Chelsea. She added, that dresses may be of any style, and that the show will not be limited to the traditional gown and veil. Women, who would like to loan their gowns for the chapter's event do not necessarily have to model them.

Those with information about a gown that might be used in the presentation, should contact Mrs. Palmer at 475-8531, or Mrs. Weldon Harbaugh at 475-1477.

Mr. Clark is also a life member of the Charles A. Durand Lodge No. 533 F&AM of Flint and a WW-II veteran.

Mr. and Mrs. Clark were married in Milan on March 11, 1950.

Legion Auxiliary

Plans April Party For VA Hospital

The regular meeting of the Herbert J. McKune Unit No. 31 of the American Legion Auxiliary was held Tuesday, March 4, at the McKune Memorial Library. Thirteen members were present along with two guests.

An announcement was made that the group would sponsor a party in April for the Veterans-at-the-Ypsilanti State Hospital; and that members will purchase handkerchiefs for the Mother's Day program at Veterans Hospital in Ann Arbor.

One of the guests, Agnes Natterstad, the 2nd District president, was introduced. Mrs. Natterstad urged members to expand their numbers. She mentioned the possibility of a new unit in the district, adding that the next district meeting would be held in Dundee on March 16.

Mrs. Natterstad was accompanied by Mara Sisty, the District secretary. The next meeting of Unit 31 will be held on April 1 at the Legion Home.

Girl Scout Council

Plans Annual Meeting At Plymouth Church

The annual meeting of the Huron Valley Girl Scout Council will be held Wednesday, March 19 from 9:30 a.m. to 2:30 p.m. at the First Methodist church, North Territorial Rd. and Sheldon Rd., in Plymouth, it was announced today.

At the meeting, five delegates to the national convention of Girl Scouts of the U.S.A. to be held in October in Washington, D. C., will be elected. Voting on this and other business items on the agenda will be 101 adult delegates and 20 girl delegates from throughout Washtenaw, Livingston, western Wayne and northern Monroe counties.

Lunch will be prepared by Senior Scout Troop No. 501 of Plymouth. Reservations for the luncheon are required and may be made by contacting the Council office at 483-2370.

SYRUP

Pure maple syrup is taken from two varieties of maple trees—both of which grow predominantly in the eastern and northeastern states and parts of Canada.

LOSE UGLY FAT

Start losing weight today or money back. MONADEX is a tablet and easy to take. MONADEX will help curb your desire for excess food. Eat less—weigh less. Contains no dangerous drugs and will not make you nervous. No strenuous exercise. Change your life...start today. MONADEX cost \$3.00 for a 20 day supply. Large economy size is \$3.00. Also try AQUATABS—they work gently to help you lose water-bloat. AQUATABS—a "water pill" that works—\$3.00. Both guaranteed and sold by: CHELSEA DRUG STORE 101 N. Main St. • Mail Orders Filled



TROOP 689

Girl Troop 689 started the March 5 meeting with a flag ceremony. Then we had treats. After treats we made the centerpieces for father-daughter night. We ended the meeting with taps. Dani Bohl, scribe.

BROWNIE TROOP 148

We discussed the Father-Daughter banquet to be held on March 16. We made table decorations for the banquet. Debbie Garman, scribe.

TROOP 145

At our troop meeting this Wednesday girls of Brownie Troop 145 talked about the Father-Daughter Banquet which will be held Sunday, March 16.

We are looking forward to a fun night with our dads and enjoyed helping with the plans.

Mrs. Koch and Mrs. Heller have dyed and crushed egg shells. We are making mosaic pictures with these. It is a lot of fun working with this type of art work.

Rhonda Bentley visited our troop Wednesday. We hope she had a good time.

Becky Schulte, scribe.

Discussion Slated March 20 on 'Basic Facts of Diabetes'

Thursday, March 20, is the date that has been set for a talk followed by discussion on the "Basic Facts of Diabetes."

The talk, to be given by Mrs. Mary VandenBosch, nurse clinician, at St. Joseph Mercy Hospital, will be held at 9:15 a.m. in the home of Mrs. William Wetzel, 17 Sycamore Dr., Chelsea.

Mrs. VandenBosch will be assisted by Mrs. Marcia Berry from the state office of the Michigan Diabetes Association. Mrs. Berry will be answering questions fielded from the audience concerning diabetes and the role the Michigan Association plays in its control.

Chairman of several nearby areas will be in attendance.

They are Mrs. R. Fullerton, Mrs. H. Surbrook, and Mrs. N. Armstrong from Ann Arbor; Mrs. L. Carey from Bridgewater; Mrs. F. Wade of Dexter; Mrs. E. Breitenwischer from Manchester; Mrs. M. Cochrane of Milan; Mrs. R. Hoeft from Saline; and Mrs. W. Wetzel of Chelsea.

Subscribe today to The Standard!

Magic Mirror Beauty Salon

Open Tuesday thru Friday 9 a.m. to 9 p.m. Saturday, 8 a.m. to 3 p.m.

PHONE 665-0816

CARPET REBIRTH

Give your carpet a new lease on life by cleaning it regularly.

JET SPRAY CARPET CLEANING

Use Your BankAmericard

Phone 761-3025 or 475-1509 Ask for John Lixey.

DEXTER KNIGHTS OF COLUMBUS

Annual

ST. PATRICK'S DAY ROAST BEEF DINNER

SUNDAY, MARCH 16

Serving 11 a.m. to 4:30 p.m.

ST. JOSEPH SCHOOL BUILDING

3430 Dover St.

ADULTS \$3.00 CHILDREN (under 12) \$1.50

Tickets at the door

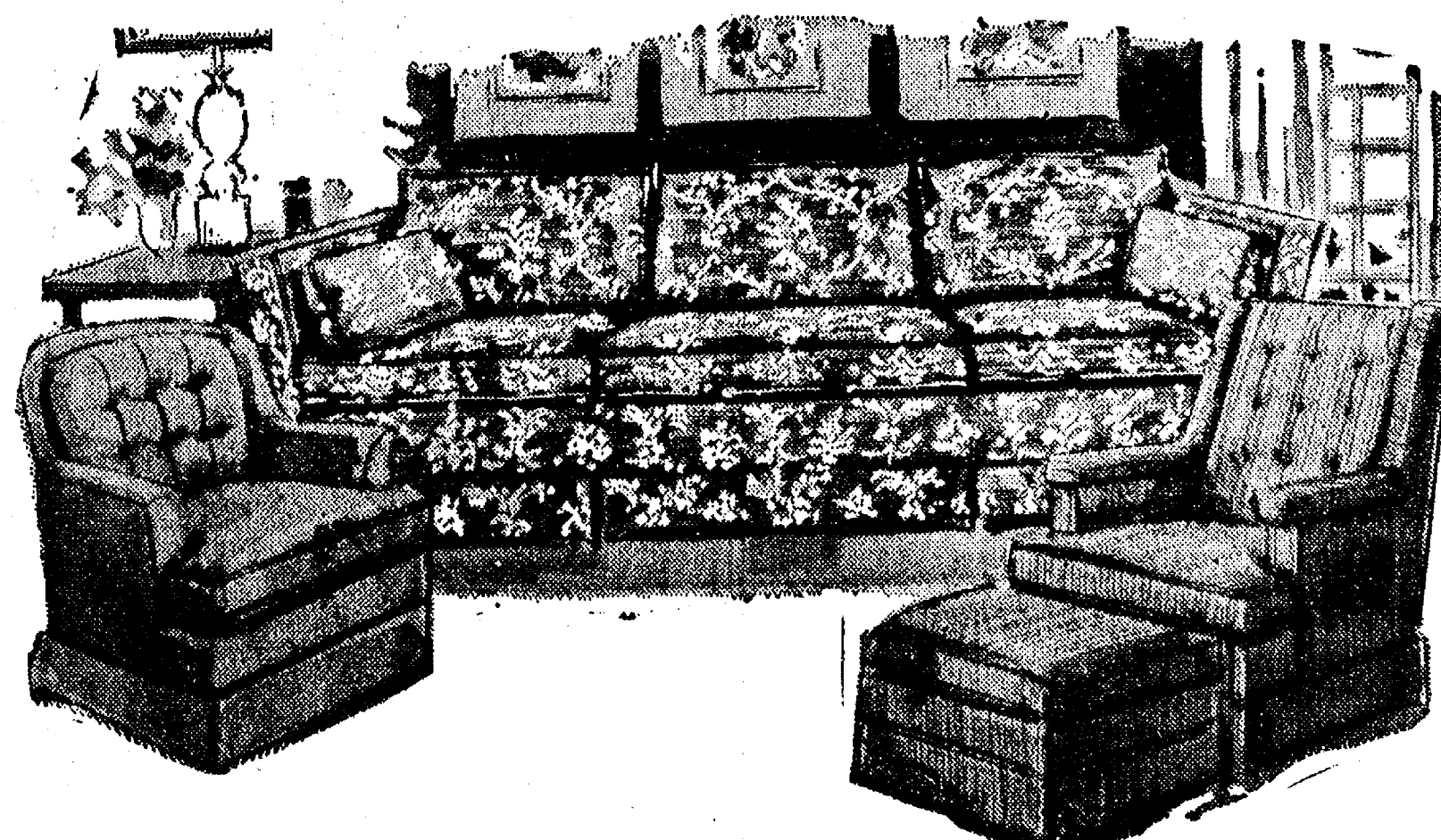


FRANKLIN FURNITURE SALE

SAVE 15% THRU MARCH 15

LAST 3 DAYS!

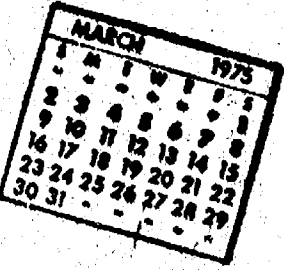
SPECIAL ORDER OR STOCK



Our fine Franklin line now at a special 15% discount. Sofas, chairs and loveseats in traditional, contemporary and colonial designs. Buy from our stock or have your selection covered-to-order in just a few weeks, and save 15%. Stop in today or anytime before March 15.

Merkel Home Furnishings

Community Calendar



Kiwanis Club March 17, 6:15 p.m., at the Fair Service Center. Speaker will be Paul R. Shutt, from the Air Pollution Control Department, State of Michigan.

Overeaters Anonymous. For people with compulsive eating problems. Meetings will be held every Monday night at 8 p.m., at the Church of Good Shepherd, 2145 Independence Blvd., Ann Arbor. For further information call 434-3517.

Rogers Corners Extension Group March 18, at 8 p.m., at the home of Mrs. Loren Koengeter. Each member is requested to bring prizes for Chelsea Hospital patients' bingo games. Also bring scissors for work on the community project.

Waterloo Village United Methodist church, Friday, March 14, 1 p.m., the Rev. and Mrs. Richard Church, Cherokee Indians, will speak. Light refreshments served at the church house.

OES card party, Saturday, March 15, 8 p.m. Public invited. xadv39

Washtenaw County Medical Care Auxiliary, Wednesday, March 19, at 9:30 a.m., Juvenile Court Center, 2770 Platt Rd. Speaker: Mrs. Linda Jackson, who will answer questions about the County Department of Social Services. Visitors welcome.

Young Homemakers' Husbands' Night, Saturday, March 22, 8 p.m., home of Mr. and Mrs. Merritt Honbaum.

Young Homemakers Easter Egg Hunt, home of Jill Bauer, Friday, March 28, 4 p.m.

Chelsea Area Historical Society is still taking 1975 annual memberships. Applications for membership may be picked up at McKune Memorial Library, or telephone 475-7290 for more information.

Art Contest. Chelsea Area Historical Society sponsoring contest for Society Emblem. Submit black and white entries to Mrs. Yelski at Junior High or Mrs. Bortin at 475-7305. There will be \$10 prize.

Rogers Corners Farm Bureau group, Friday, March 14, at 8:30 p.m., home of Edwin Horings, Waldo Rd.

Lyndon study group March 20 at the Lyndon Township Hall, 12:30 p.m.

Presentations of "A Trip Through the Holy Land" by the Paul Papsdorf will be the principal feature of the Lenten family night service at Salem Grove Methodist Church Sunday, March 16 at 7 p.m. Everyone is welcome.

Chelsea Community Farm Bureau, Thursday, March 13, Sylvan Township Hall, with pot-luck supper at 7 p.m. Hosts are Mr. and Mrs. Roy Kalmbach and Christine Heydlauff.

Puppet show, "The Caveman Story," Wednesday, April 2, 1:30 and 3 p.m., Beach Middle school auditorium. Tickets, 50 cents, available from members of Modern Mothers Child Study Club.

Humane Society of Huron Valley has dogs and cats for adoption. Owners may reclaim their lost pets. Phone 662-5585. Open from 9 a.m. to 5 p.m. daily, Sunday, 1 p.m. to 5 p.m. 100 Cherry Hill Rd., quarter-mile south of Plymouth Rd. at Dixboro.

Pap tests are free for all area women, Tuesday mornings, at St. Joseph Mercy Hospital, Ann Arbor. Call American Cancer Society office, 668-8857 for appointment.

Chelsea Band Boosters meet second Thursday of every month, Chelsea High school band room, 8 p.m. All band parents are members.

Inquiries regarding the Chelsea blood bank may be directed to Harold Jones in the event that Mrs. Dudley Holmes is unavailable, or to Robert Moyer, American Red Cross in Ann Arbor, 971-5300.

American Legion and Auxiliary hospital equipment available by calling Bill Cotte at 475-2724.

AA and Al-Anon meeting, Monday evenings at Chelsea Hospital, 8:30 p.m. Closed meetings.

Chelsea Co-op Nursery applications for 1975 classes are now

DEATHS

Mrs. Chandler Rogers
Cavanaugh Lake Resident
Dies Suddenly at Home

Ethel R. Rogers of 82 Cavanaugh Lake Rd., died suddenly at home Monday, March 10.

Born on Feb. 20, 1885 in Stratroy, Canada, Mrs. Rogers is survived by her husband of 65 years, Chandler; one son, Jack Rogers of Rubicon, Wis., and a daughter, Mrs. Roberta Downs of Mamaronock, N.Y. Mrs. Rogers is also survived by seven grandchildren and several nieces and nephews.

She was a member of the First Congregational church of Chelsea, the Women's Fellowship of the church, and an honorary member of the Chelsea Woman's Club.

Funeral services will be held Thursday, March 13 at 1 p.m. at the Burghardt Funeral Home, The Rev. Carl W. Schwarm will officiate. Cremation will follow.

Friends may call at the funeral home.

Mrs. Carl Ashfal

Former Dexter Resident
Dies at Methodist Home

Ella Ashfal, 85, formerly of Broad St., Dexter, who was living at the Chelsea Methodist Home, died Monday, March 3 at the Chelsea Methodist Home.

Born Nov. 5, 1889 in Jackson county, she was the daughter of George and Katherine (Klump) Ashling. She was a member of St. Andrew's United Church of Christ, of Dexter, of the Ladies Aid Guild and of the Harmony Rebekah Lodge No. 460.

She married Carl Ashfal on Dec. 28, 1910. He preceded her in death in December, 1956.

Surviving are two daughters, Mrs. Walter (Dorothy) Leunberg of Fenton and Mrs. Lester (Wilma) Beebe of Port Orange, Fla., six grandchildren, 12 great-grandchildren, several nieces and nephews.

Mrs. Ashfal was preceded in death by two brothers, Ben and Henry Ahling, and one sister, Mrs. Nettie Rosentreter.

Funeral services were held Thursday, March 6, 1 p.m. at the Hosmer Funeral Home, Dexter, with the Rev. Kenyon Edwards officiating. Burial followed in East Cemetery, Grass Lake.

Memorials may be made to St. Andrew's United Church of Christ in Mrs. Ashfal's name. Envelopes are available at Hosmer Funeral Home.

being taken. For information, call Jearl Mull, 426-8822. xadv121

Chelsea Home Meal Service delivers one hot meal a day to elderly and disabled living in the Chelsea area. For information call 475-8014 or 475-2923.

Sylvan Township Board meeting the first Tuesday of the month, at 7 p.m., at Sylvan Township Hall.

Senior Citizens Fun Nite every Friday evening at 7:30.

Weekly Tuesday Nite Singles Club, dance, 9 p.m. to midnight, Ann Arbor YM-YWCA, with live band.

Lamaze Association of Ann Arbor is now holding classes at the Chelsea Community Hospital. If interested, call 761-4402, or 475-9316.

Weekly Ann Arbor Saturday night singles dance, live band, YM-YWCA, 350 S. Fifth, Ann Arbor, 9 p.m. to 12 midnight.

Mrs. George Baxter
Dies Suddenly Feb. 27
At Ann Arbor Hospital

Mrs. George (Eleanor) Baxter, age 58, died suddenly Thursday Feb. 27 at St. Joseph Mercy Hospital.

Born Jan. 12, 1917 in Marquette, Mrs. Baxter was the daughter of Patrick and Hattie Paetzke Shea. She was married to George Baxter on Sept. 3, 1938.

Mrs. Baxter is survived by her husband, one son, James, of Lewiston, Ida.; a daughter, Mrs. William (Leslie) Buhl of Paw Paw; six grandchildren; two brothers, Harold Shea of Milwaukee, and William Shea of Marquette.

A graduate of the St. Joseph Mercy School of Nursing in Detroit in 1938, Mrs. Baxter was employed at St. Joseph Mercy Hospital in Ann Arbor.

Funeral services were held Saturday, March 1 at 11 a.m. at St. Mary Catholic church. The Rev. Fr. Philip Dupuis officiated.

Burial followed in Mt. Olivet Cemetery. Rosary was recited Friday, Feb. 28, at 6:30 p.m. at the Burghardt Funeral Home.

Piano Students In Achievement Test Program

Ten Chelsea piano students under the direction of their teacher, Betty Rasmussen, will be among 42 area piano students to participate in the first Achievement Testing program of the Michigan Music Teachers Association to be held Sunday, March 16, from 1 to 5 p.m. Space for the testing has been donated by the University of Michigan School of Music.

This event, which has been made possible with the support of the Michigan Council for the Performing Arts, is under the local direction of the Ann Arbor area Piano Teachers Guild.

Its purpose is to raise the standards of musicianship statewide, and includes not only piano students, but students of voice, strings, and organ, whose teachers are members of the MMTA (Michigan Music Teachers Association).

Judges will look for excellence of performance, as well as technical and sight reading skills. The students will also be tested in music theory and aural awareness.

Chelsea participants will be: Kimberly Smith, Zachary Smith, Julia Smith, Tom Gaunt, Clifford Scholz, Bethel Snyder, Christine Johnson, Marcia Warren, Tim Stubbs, and Eric Picchick.

BIRTHS

A son, Jacob Paul, March 6, to Mr. and Mrs. Larry Porath of Bellaire. Paternal grandparents are Mr. and Mrs. Warren Porath, Sr., of Chelsea. Maternal grandparents are Mr. and Mrs. Donald Hadwin of Frankfurt.

A son, Chad Anthony on March 9 at St. Joseph Mercy Hospital in Ann Arbor, to Mr. and Mrs. Wayne Stahl of Pinckney. Paternal grandparents are Mr. and Mrs. Vincent Stahl of Pinckney. Maternal grandparents are Mr. and Mrs. Don Pierson of Chelsea.

CHEST-NUT
A chestnut is the guy down the street who's crazy about chests.

olan mills is Pleased to Present...
BEAUTIFUL PORTRAITS
IN NATURAL LIVING COLOR



\$1

COMPLETE WITH THIS AD
Plus 50c Handling Charge

A Regular \$20.00 Value!

ONE 8x10 NATURAL LIVING COLOR PORTRAIT
Minors must be accompanied by a parent. Only one advertised offer per subject and one per family every three months. Groups \$1.00 extra

PRESENT THIS AD TO OUR PHOTOGRAPHER
SATURDAY, MARCH 15
10 a.m. to 4 p.m.

At K. of C. Hall, Chelsea, Michigan
BRING GRANDPARENTS IN FOR A
FREE 8x10 COLOR PORTRAIT OF THEM



ABA SQUIRES PLAYERS pictured above are, In back, from left, are Doug Henson, John Sey, from left, in front, Mike Niebauer, Matt Villemure, fried, Coach Jim Marshall, David Kiel, and Doug Jay Eibler, Shannon Carpenter, and Kipp Bertke. Burchett. Not present for photo was Peter Eisele.

Wrestlers Awarded Letters at Banquet

Wrapping up a very successful season which saw Chelsea wrestlers win the Dexter Tournament, the Howell Tournament, finish in runner's up position in the tough Western Tournament, tie for the Southeastern Conference title with Dexter, and finish up with Darryl West gaining a State Championship at 145 lbs. in class B.

Coaches Richard Bareis and Sam Vogel issued 17 varsity letters and 14 junior varsity letters.

In making the awards, Coach Bareis remarked that Chelsea was losing many fine wrestlers, who would be difficult to replace next year.

Freshmen receiving varsity letters were 98 pounders David Stahl and John Bulick. Ricky Beeman at 119 lbs. also received a letter.

Jim Stahl was Chelsea's only sophomore letter winner this year. Jim was outstanding in posting a 21-8-1 record to his second-year varsity award.

Juniors receiving first-year awards were 112 lbs. Kevin Kelly and 167 lb. Eric Prinzing.

A second-year varsity award went to Tim Reed who posted a fine 22-4 record at 155 lbs.

Juniors earning third-year varsity awards were Nick Keiser at 119 lbs., and Dennis Bauer who posted a 30-6 record together with a regional championship at 167 lbs.

Seniors whose spots will be hard to fill are first-year letter winner Mark Pennington. Mark did a fine job as a replacement at either 138 or 145 lbs.

David Proctor, a second-year letter winner, wrestled at 155 lbs. Another second-year winner is Dave Keiser who finished second in the SEC.

Kermit Sharp was the third second-year winner, with a record

posted at 28-6-2. Kermit won a championship in both the SEC and Howell Tournament action.

A 20-9-1 record at 132 lbs. was posted by third-year varsity letter winner Doug Reed.

Doug was joined by Co-Captain Mike Agopian who won two league titles, placed third in state competition for 1974, was Champ at Howell, Dexter and Western. His total high school record is 85-18-2, with a record this year of 34-3-1.

Darryl West, a state champion this year, placed third in the state as a sophomore, and again as a junior. He was league champ for three years, and placed second in the league as a freshman; all at a fighting weight of 145 lbs. His record for this year is 36-3-1, with a total high school record of 105-25-2.

Coach Bareis is proud of his team. "We had seven fine winning wrestlers with records of over 20 victories. Four of these wrestlers will be graduating, and they will be hard to replace. We do have some young wrestlers coming, but it is hard to replace a total of 116 match victories. This wrestling team has either won or shared the SEC title for the last three years. No previous Chelsea wrestling team has been able to win back-to-back championships."

Winning junior varsity awards for Chelsea were Kelly Alder, James Bollinger, Jeff Branham, Joe Branham, Mark Bucholz, Mike Cameron, Bill Esch, Mike Foster, Joe Greenwood, Barry Hagen, Todd Headrick, Dan Schrader, Terry Thompson, and Mike Young.

"These young men have exhibited fine potential and although they lost a lot of matches, we expect good things from them," said the coaches.

Eighth Grade Band Scores Near Top

Ida High school played host to 8th grade band members of Beach Middle school on Saturday, March 8, as they participated in the District's Music Festival competition, Class B division.

The band received a II Division rating for performance, with a I Division rating in sight-reading.

Band Director Ronald Harris was particularly pleased with the judges' decision in the sight reading category. "I am very happy with the performance," said Harris.

Chaperones for the trip were Ernest Smith, Mrs. Daniel Snyder, Mrs. John Eibler, Earl Guenther, and Mrs. Jerry Waldyke.

GET RICH QUICK

A few people know how to get rich quick—they're able to determine when a piece of junk turns into an antique.

Telephone Your Club News To 475-1371.

Seventh Grade Band Tops in District Meet

The 7th grade band of Beach Middle school earned a Division I in the Class C competition at the District Band Festival held Saturday, March 8, at Saline Junior High school.

Competition was based on the performance of a concert; requiring the musicians to play a march, a required selection chosen from three possibilities, and a number selected at the group's discretion, together with a sight-reading competition.

Under the direction of Warren Mayer, the 7th graders earned a First Division rating in both categories.

Mayer expressed special pleasure with the band's performance in the sight-reading category.

Apparently, this category in particular is difficult. Band members are allowed seven minutes to study the music, after which they are judged on their musical performance the first time through.

Mayer also expressed pride and satisfaction with the band members. "We have a great bunch of kids here. I know I enjoyed the festival. I think they did too."

Chaperones for the trip were Robert Benedict, Mr. and Mrs. Clawson, and Barbara Hughes.

Ohio Pastor Will Conduct Lenten Series

The Rev. John Higginbotham of Cleveland, O., will be conducting a series of Lenten assemblies beginning Wednesday, March 19 at the First Assembly of God, located at 14900 Old US-12 East.

The Rev. Higginbotham is a well-known speaker, having held assemblies in many Michigan churches, as well as churches outside the state. He has also made important contributions to the charismatic movement.

The meetings are scheduled to be held nightly at 7 p.m. March 19 through March 22. The fifth and final meetings will be held Sunday, March 23 at 11 a.m. and 7 p.m.

The public is welcome to attend any or all of these Lenten assemblies.

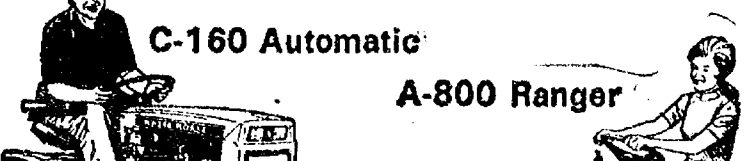
1975 WHEEL HORSE 'Wheel & Deal Days' at GAMBLES

INTRODUCING THE 1975 A, B, C, D SERIES

OF TRACTORING FROM...

WHEEL HORSE

PRICES START AT \$795



We offer four series of tractors because some people have different size lawns and lots... some have gardens... some do not. So why buy more or less garden tractor than you really need? We're confident you'll find the right lawn and garden tractor among 11 different models for 1975. We'll recommend either an 8, 10, 12, 16, 18 or 19.9 HP tractor that you really need. Come in and let's talk about A, B, C's of Tractoring.

GO **GAMBLES**
110 S. Main St. Ph. 475-7472

WHEEL HORSE
lawn & garden tractors

- 1974 PRICES -
Savings of \$300 and more!

FLOOR TILE

Specials

12"x12" Vinyl - Asbestos

BY KENTILE

YOUR CHOICE OF 13 COLORS, PATTERNS & TEXTURES

REG. 26c **22c** EACH

9"x9" Pure Vinyl

Colonial brick pattern - in white or red

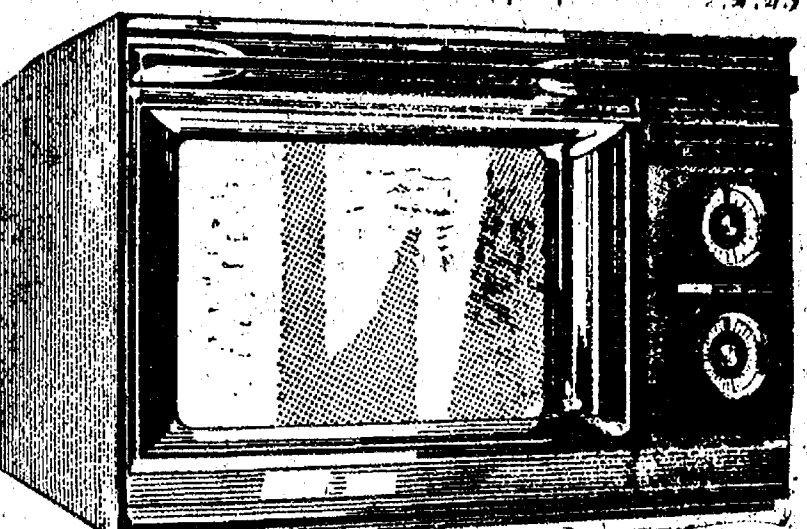
REG. 86c **73c** EACH

SAVE SAVE SAVE

CHELSEA LUMBER

When you're in the market for a microwave oven, buy the best...

Radarange
MICROWAVE OVEN
made only by **Amana**



Cuts cooking times by 75%.
Cooks a 5-lb. roast in 35 minutes,
bakes a potato in 4 minutes,
cooks hot dogs in 20 seconds.

Amana introduced microwave cooking into the home. The Radarange microwave oven ushered in a whole new era in cooking. And along with it, a lot of competition.

But the competition has nothing like the Amana Radarange microwave oven, and they never will. Because Amana holds exclusive patents on the Radarange oven. So, as much as the others would like to have the features that Amana has, they never will.

Is it any wonder more Radarange microwave ovens are sold than all other makes combined? We don't think so. Come in and see for yourself why the Amana Radarange is the best microwave oven you can buy.

If it doesn't say **Amana**,
it's not a **Radarrange**.

HEYDLAUFF'S
N. Main St., Chelsea Ph. 475-1221

Chelsea Man Qualifies as New Certified Graphoanalyst

Thomas J. Killelea, 42 Chestnut Dr., a Quality Engineer at Bechtel Professional Associates in Ann Arbor, has just received a certificate qualifying him as a Certified Graphoanalyst. The International Graphoanalysis Society, based in Chicago, Ill., granted the certificate to Killelea after he successfully completed an 18-month extension course in the techniques of scientific handwriting analysis.

A Certified Graphoanalyst is trained to identify personality traits in people without the necessity of meeting them, using samples of their handwriting for analysis purposes.

Killelea points out that the services of Graphoanalysts are being used more and more in business to facilitate personnel selection and credit risk evaluation as well as in questioned document examination work. He advises, too, that the Graphoanalytical system of personality assessment is recognized as a valuable aid in counseling work and is used by personal, marital, vocational and guidance counselors in many parts of the world.

Certification authorizes Killelea to prepare personality assessment reports based on Graphoanalysis for individuals and business firms;

lecture to civic, service and social organizations whose members may be interested in learning about the subject; and conduct introductory Basic Steps programs in Graphoanalysis for adult education groups in his community.

Valuables Stolen from Car in Parking Lot

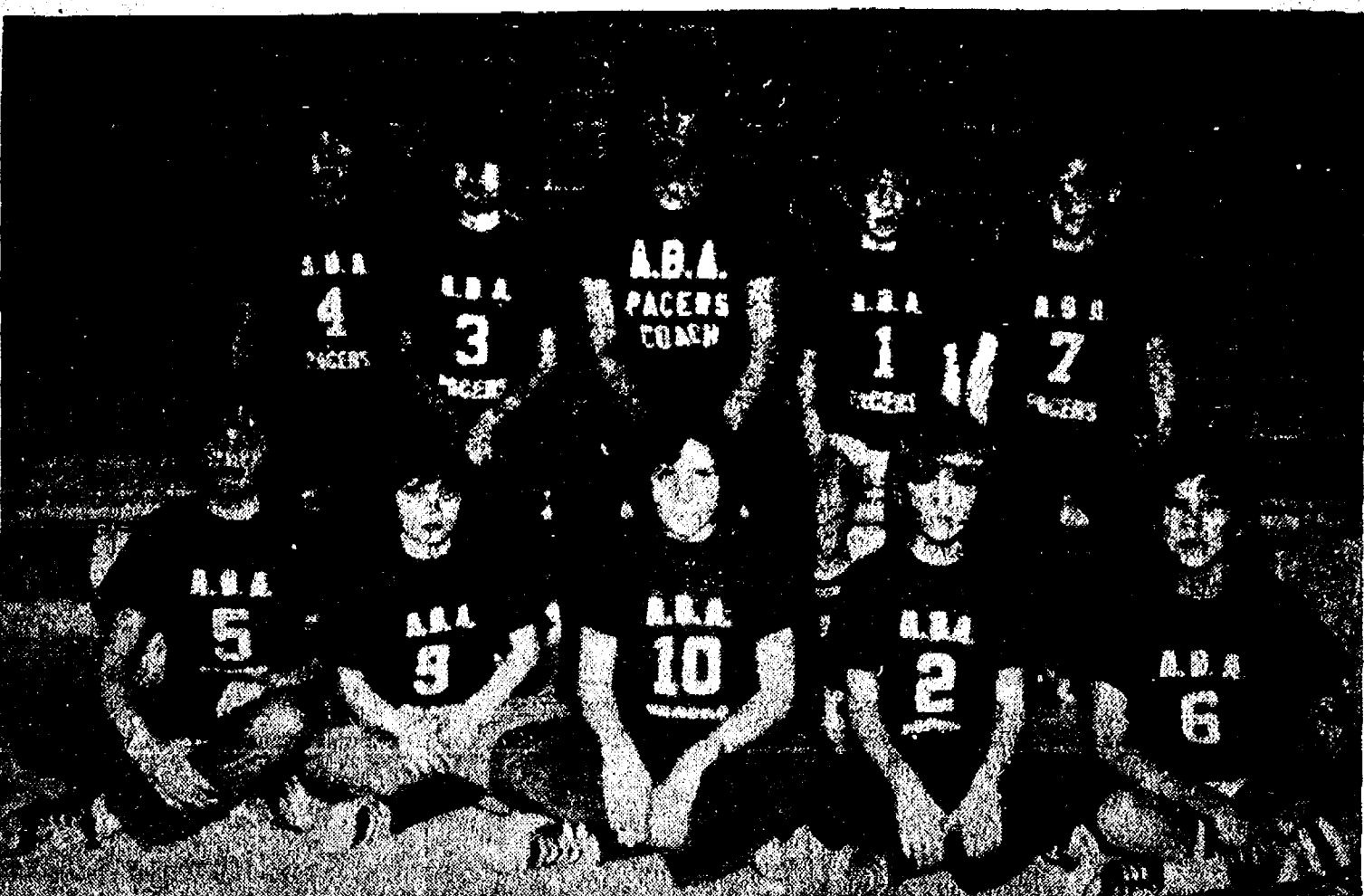
Mary Lou Paul, of 681 W. Middle reported to police that at 1:30 a.m. on March 7, her car was broken into while parked in the Chelsea Lanes lot.

Apparently entry was made to the locked car with a rock used to break the window on the driver's side.

Missing from the car was one attache case, a tape deck and speakers together with an assortment of eight-track tapes.

NUTRIENTS

The National Research Council's Food and Nutrition Board has concluded that significant numbers of Americans suffer a variety of vitamin and mineral deficiencies. They recommend that all foods made of wheat, corn and rice be enriched with 10 essential nutrients.



PACERS OF THE ABA include, in front, from left, David Weber, John Packard, Duane Branch, Mark Porath, and Daren Pierson. Not present for photo was Frank Waller.

APARTMENT FUN

Some of these new apartment buildings have walls so thin that when one lady peels onions the people next door cry too.

Silver Dollars Won By 20 Children At Cartoon Show

Recreation Director Tom Ballstrene announced that more than 500 parents and children attended the Cartoon Show sponsored by the Recreation Council.

The following children won silver dollars at the lucky drawing during the event: Craig Miller, Tina Chene, Alan Hale, Dana Petch, Kirk Eubanks, Jane Musbach, Matt Lorenz, Liz Kincer, Todd Brown, Lynn Clemes, Dennis Fischer, Diane Desmyther, Larry Lindstrom, Lynn Kaiser, Chris Martin, Laurie Fuls, Roger Loucks, Julie Koch, Larry Nicks, Shasey Westcott.

Next month another cartoon show will be offered with prizes and old cartoon favorites like Donald Duck and Mickey Mouse.

Hockey Team Wins, 5-3, Over Napoleon

Chelsea hockey team defeated Napoleon by a 5-3 score at Jackson Ice Arena, in a game where two out of five goals were made unassisted.

Unassisted goals were made by Bob Fisher and Don White. Mike Hastings was able to score a goal with the assistance of Greg Hastings. A fourth goal was scored by Harold Vandervoort with Mike Hastings assisting.

Mike made the fifth and winning goal with an assist from Harold Vandervoort and Mark Rickelman. Goalie Mike Check received 35 shots on goal.

All-stars for the game are Bobby Fisher and Harold Vandervoort. Play-offs have been scheduled for March 16 at 6 p.m., and March 22 at 10 p.m. against Northwest. The game will be played at the Jackson Ice Arena.

Should Chelsea win in Jackson on the 22nd, they will play again on March 23.

The All-Star game was played between the Leland division and the Banner division. Banner won the game, 5-4.

Mike Hastings represented the Chelsea High School Hockey Club at that game.

Bicycle Stolen from Apartment Hallway

A Hiawatha yellow 10-speed bicycle valued at \$190 was reported to police stolen by its owner, Vickie Smith.

Vickie reported to police that she believed the bike was stolen sometime around midnight March 8, while locked in the hallway of her apartment building at 118 E. Middle.

Police are still investigating.

Manchester Coin Club Organizes

Manchester Coin Club met for the first time on Saturday, Feb. 21, at the Emmanuel church. Temporary officers were selected, and president Gilbert Sullaway stated that the junior members would elect their own officers at the next meeting. The club plans to have guest speakers from the Michigan Numismatic Association at future meetings.

Manchester Coin Club plans to hold its first show in connection with the United States bicentennial in 1976.

Ray Gonyer and James Vida donated coins for prize drawings. Winners were Dorothy Merz, Bryan Little, Chris Wise, Danny Little, and Tim Arnett.

Anyone interested in coins or coin collecting is invited to attend the next meeting, which will be held on March 15 at 1 p.m. at the Emmanuel church in Manchester. This is a fine opportunity for people who want to learn about coins.

Membership in the club will be limited to residents of Jackson, Ingham, Eaton, Washtenaw, Livingston and Lenawee counties. Call 428-8844 for further information.

Biddy Basketball Play Continues Into Third Week of Competition

Teams are pushing for firsts in their league standings of Chelsea Recreation Council's three biddy basketball leagues this week after the third Saturday of actual play.

On top in the WBA are the Bulls who won their fourth game by downing the Rockets, 6-4. The Suns, Hawks and Capitols have a 3-2 standing in their league resulting from this week's play.

ABA League has a tie between the Colonels and the Warriors, now both holding tight to a 4-1 game standing in their league.

Previous to Saturday's play, the Warriors held an undefeated record, which was upset in a close game, when the Colonels dumped them, 8-6. The Nets and the Pacers lag behind in the league's standing with a 1-4 game record.

NBA Celtics lost their first game, 9-6, to the Bucks who recorded their first season victory. The Celtics, however, still grasp the league title with 4 wins and 1 loss.

Circus Coming To Chelsea

A circus will be coming to town! When? April 21. Where? Chelsea High School Gymnasium. What time? Six and 8 p.m. How much? \$1 for children under 13, \$2 for adults, and a special Family price of \$6.50, for two adults and four children.

The announcement was made by Chelsea Recreation Director Tom Ballstrene.

The Vorrhoe's Brothers Circus of Grand Rapids, featuring American as well as European Circus Acts, including a circus atmosphere of popcorn, clowns, peanuts and candy corn, will perform to the delight of both children and adults on Monday evening, April 21 inside Chelsea High School Gymnasium.

BIDDY BASKETBALL Games for March 15

WBA Games —
Lakers vs. Bulls, 10 a.m.
Capitols vs. Suns, 10 a.m.
Rockets vs. Nicks, 10:40 a.m.
Hawks vs. Kings, 11:20 a.m.

ABA Games—
Braves vs. Nets, 10 a.m.
Warriors vs. Pacers, 10:40 a.m.
Colonels vs. Squires, 11:20 a.m.

NBA Games—
Pistons vs. Bucks, 10:40 a.m.
Bulls vs. Celtics, 11:20 a.m.

WBA BASKETBALL Standings as of March 8

	W	L
Capitols	3	2
Kings	2	3
Rockets	2	3
Bulls	4	1
Lakers	4	1
Hawks	3	2
Suns	3	2
Nicks	2	3

ABA BASKETBALL Standings as of March 8

	W	L
Braves	3	2
Squires	2	3
Colonels	4	1
Warriors	4	1
Nets	1	4
Pacers	1	4

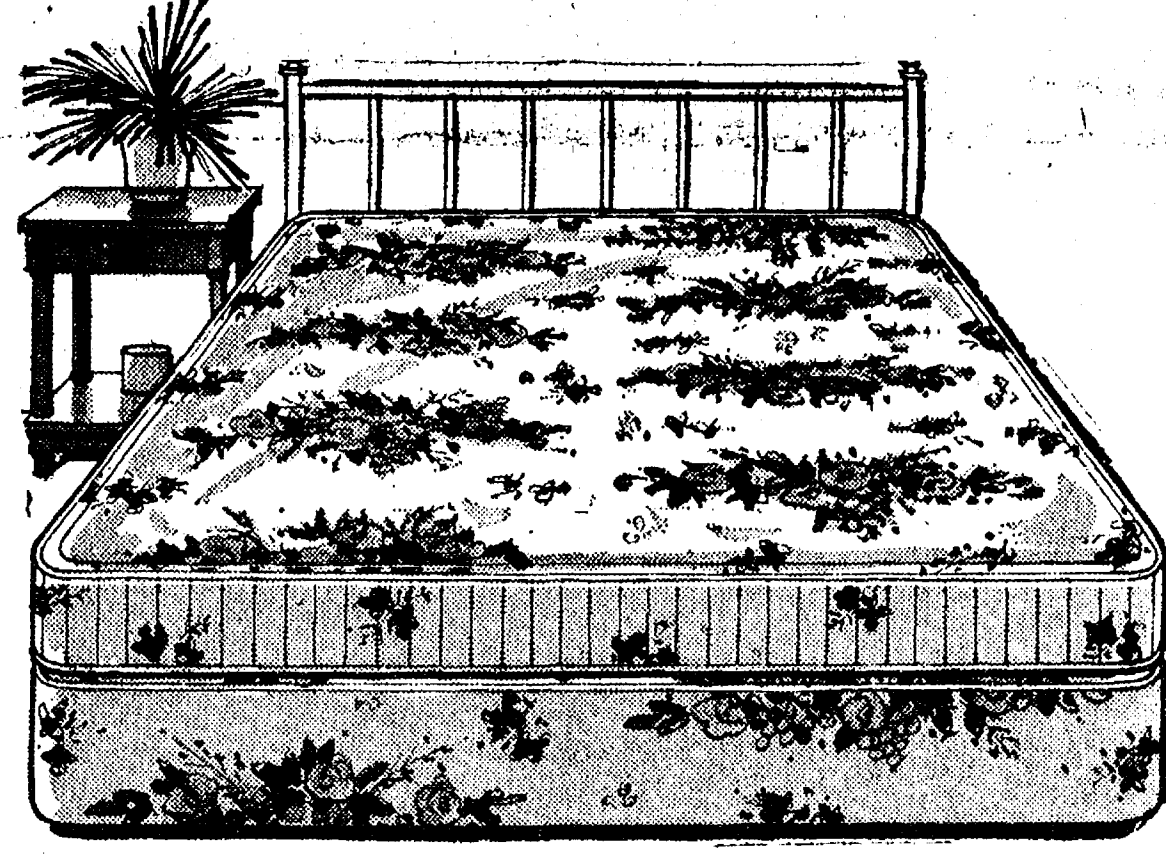
NBA BASKETBALL Standings as of March 8

	W	L
Pistons	2	3
Bulls	3	2
Celtics	4	1
Bucks	1	4

FLEACED

As one flea said to the other: "I'm saving up to buy my own dog!"

MATTRESS & BOXSPRING SALE
SAVE UP TO 1/3
ODD LOTS and DISCONTINUED MODELS
STEARNS & FOSTER and SIMMONS



MATTRESS and BOXPRING SETS

	Regular	SALE PRICE
2 TWIN SETS, Stearns & Foster, Winthrop	\$139.95	\$ 89.95
1 TWIN SET, Stearns & Foster, Comfort Soft	\$219.95	\$149.95
1 TWIN SET, Simmons Beautyrest, Backcare I	\$219.95	\$149.95
1 QUEEN SET, Simmons Beautyrest, Backcare I	\$329.95	\$239.95
2 QUEEN SETS, Stearns & Foster, Golden Anniversary, firm	\$199.95	\$139.95
1 QUEEN SET, Stearns & Foster, firm rest	\$199.95	\$139.95
1 QUEEN SET, Stearns & Foster, Deluxe firm rest	\$229.95	\$159.95
1 KING SET, Stearns & Foster, Golden Anniversary, firm	\$299.95	\$199.95

ODD LOTS, SINGLE PIECES

1 TWIN MATTRESS, Stearns & Foster, Viscount	\$ 59.95	\$ 39.95
1 DOUBLE MATTRESS, Beautyrest	\$129.95	\$ 89.95
1 DOUBLE MATTRESS, Stearns & Foster, Splendor, firm	\$ 99.95	\$ 66.95
2 DOUBLE MATTRESSES, Stearns & Foster, Golden Anniversary, firm	\$ 79.95	\$ 59.95
1 DOUBLE MATTRESS, Stearns & Foster, Berkely, damaged	\$ 59.95	\$ 29.95
1 DOUBLE BOXSPRING, Stearns & Foster, Berkely	\$ 59.95	\$ 39.95
1 DOUBLE BOXSPRING, Stearns & Foster, Deluxe, firm rest	\$ 89.95	\$ 59.95
1 DOUBLE MATTRESS, Simmons for Hide-A-Bed	\$ 69.95	\$ 46.95
1 3/4 BOXSPRING, Stearns & Foster, firm rest	\$ 89.95	\$ 59.95
1 QUEEN BOXSPRING, Stearns & Foster, firm rest	\$ 99.95	\$ 59.95
1 QUEEN MATTRESS, Beautyrest Backcare I	\$169.95	\$119.95
1 QUEEN MATTRESS, Beautyrest Supreme I	\$169.95	\$119.95
1 QUEEN MATTRESS, Serta Perfect Sleeper	\$149.95	\$ 99.95
1 QUEEN MATTRESS, Beautyrest	\$169.95	\$ 99.95

Merhel HOME FURNISHINGS
Open Monday and Friday Until 9
Phone 475-8621

Get \$3 back
during
The Jockey®
\$3.00 Savings
Plan
Promotion

March 9 to
March 29, 1975

Limit: \$3 per family.

Mail Jockey® International the empty wrappers from 6 Jockey "Classic" briefs, Midway® or Athletic shirts (any combination of 6 garments) and the sales slip and Jockey will mail you \$3 back. Offer good March 9 to March 29, 1975.

Limit: \$3 per family.

Classic brief, 28-44\$2.00
Athletic shirt, S-M-L-XL\$1.75
Midway®, 30-44\$2.50

For details look for our
Jockey® Brand Underwear Display.

STRIETER'S Men's Wear
"The Place To Go for Brands You Know"

RICK'S MARKET
Just North of Chelsea on M-52 "The Friendly Store" Phone 475-2898

SPARTAN FROZEN VEGETABLES

	Cases	Ind. Pkg.
BROCCOLI, 10-oz. pkg.	\$3.50	3 for 99¢
CUT CORN, 10-oz. pkg.	\$3.30	3 for 89¢
MIXED VEGTTABLES, 10-oz. pkg.	\$3.50	3 for 99¢
PEAS & CARROTS, 10-oz. pkg.	\$3.15	3 for 89¢

HANS MEAT SPECIALS

SMOKED POLISH RINGS lb. 99¢
OLD FASHION DUTCH LOAF lb. \$1.09
... Fresh from Hans Sausage House

Concentrated "HELP" Fruit Drink

12-Oz. Cans **4 for \$1.00**

The Freshest Baked Goods in Town
MADE HERE DAILY
ROLLS - BREAD - DONUTS - COFFEE CAKES

You and Your BUSINESS

... one of the reasons we're in business ... with the "know how" to combine all your policies into a convenient, monthly payment package at a fair price. Check the facts

DAVE ROWE
107 1/2 S. Main
Chelsea, Mich.
Ph. 475-8065

FARM BUREAU INSURANCE GROUP

Ads
Taken
Till 1 p.m.
Tuesday

USE ACTION-PACKED WANT ADS

Just
Phone
475-1371

WANT ADS

The Chelsea Standard

WANT AD RATES

PAID IN ADVANCE—All regular advertisements, 75 cents for 25 words or less, each insertion. Count each figure as a word. For more than 25 words add 3 cents per word for each insertion. "Blind" ads or box number ads, 35c extra per insertion.

CHARGE RATES—Same as cash in advance, with 25 cents bookkeeping charge if not paid before 1 p.m. Tuesday preceding publication. Pay in advance, send cash or stamps and save 25 cents.

DISPLAY WANT ADS—Rate, \$1.40 per column inch, single column with only 6-point and 14-point light type only. No borders or boldface type. Minimum 1 inch.

CARDS OF THANKS or MEMORIALS—Single paragraph style, \$1.50 per insertion. 30 words or less; 3 cents per word beyond 30 words.

COPY DEADLINE—1 p.m. Tuesday week of publication.

Custom Built Homes
Oh! We Remodel too
U—can count on us
N—o Job Too Small
T—rim Inside & Out
R—ough-In Only If
V—ou Want to Finish
S—iding Aluminum, 5" Gutters
I—mmediate Attention
D—ALE COOK & CO.
E—stimates, Free

BUILDERS
Please Call
475-8863

DALE COOK

CAR RENTAL by the day, week, end, week or month. Full insurance coverage, low rates. Call Lyle Chriswell at Palmer Motor Sales, 475-1301.

GUTTERS

SEAMLESS aluminum eaves-troughs installed. White and brown. Call Wilson Metal Shop, Manchester, 428-8488.

McCulloch
Portable Generators
Chain Saws
WE SELL, SERVICE,
SHARPEN AND TRADE.

Chelsea Hardware

DRY WALL WORK

Complete services. References. Texturing. Free estimates. 663-5882 or (1) 449-2904.

KETO USED CARS

8020 GRAND - DEXTER
428-4535
CARS BOUGHT AND SOLD

WANT ADS

Pickup Caps & Covers

For all makes and models. Standard and custom-designed. From \$147.00. Free brochure.

PIONEER COACH

MANUFACTURING CO.
3496 Pontiac Trail
Ann Arbor, 688-0785

KNAPP SHOES

For Cushion Comfort
Robert Robbins
475-7282

D&G Allen Excavating

Septic Tanks and Drainfields
Back Hoe and Dozing
Sand, Gravel and Topsoil Hauled
Phone (517) 851-8386
or (517) 851-8278

VACUUM CLEANERS

Authorized Electrolux
sales and service.
James Cox
428-2931, or 428-8686
118 Riverside Dr., Manchester

Real Estate One

Of Washtenaw
1196 M-52
Chelsea, Mich. 48118
We Make Things Simpler
For You!

LIVE RENT FREE—New 3-bed-room ranch west of Chelsea. Easy to finance. Plush decorating. \$27,000. Call now!

EXCEPTIONAL CONTEMPORARY ranch on 3 acres. Large rooms, central air. Secluded, superbly landscaped, includes 2 1/2 acre lake lot. Replete with wildlife. \$48,000.

COUNTRY ATMOSPHERE, 2-year old, 3-bedroom ranch, full basement, 2 1/2-car garage on 4 acres. Near M-52, Chelsea schools. \$47,900.

IMMACULATE RANCH on 1 acre. 25 minutes from Chelsea. Charm with economy. Pretty as a picture. Reduced to \$31,900. Call today!

OWNER ANXIOUS TO SELL—3-bedroom home on 3 acres. Chelsea schools, close to I-94. Must be seen to be appreciated. \$52,500.

DAYS - 475-8693

Evenings—
Bob Myrnel 428-8888
Ted Picklesimer 475-8174
Ed Coy 428-8235
Al Kleis 475-7882
Paul Erickson 475-1748
Gil Harrell 485-3976
Tina Cotton 475-2637

Shop the

Bargain Floor

1/3, 1/2 and more off

DANCER'S

WEDDING DRESS for sale, with cathedral veil and train. Call 475-1037.

WANT ADS

TV REPAIR and service. House calls. Free tube testing. Antennas installed and repaired. Free estimates. Barry J. TV, 8071 Main, Dexter, 426-8191.

FORMAL WEAR

RENTAL SERVICE
Proms - Weddings - Special Events
6 different colors.

Foster's Men's Wear

LOST—Small black dog, resembling a Scottie, with patch of white under chin. Lost near Lima Center and Scio Church Rd. Collar, but no identification. Reward if found. Call 475-2271, or 475-1790.

New '74's at

Year-End Sale Prices

5 new '74 cars and trucks
in stock for immediate delivery.

\$200

CASH REBATES
on Duster, Dart
2-Doors

\$150 REBATE
on Pick-Ups and Vans

See us for details.

Quality Used Cars

'74 PLYMOUTH Fury 4-dr. county car, V-8, auto, p.s., air cond., rear defogger, radials. \$1495.
'74 CHEV. Monte Carlo, 350, auto, p.s., p.b., air, AM-FM stereo, buckets, Landau roof. \$3995.
'73 DODGE D-100 Club Cab, 318, auto, p.s., p.b., AM radio \$2295.
'73 DATSUN pickup, auto, trans., step bumper, new spare, 18,000 miles. \$2295.
'73 PLYMOUTH Fury 1 1/4-dr., V-8, auto, p.s., p.b., air cond. \$1495.
'72 FORD F-250 pickup, 360, 4-speed. \$1895.
'72 FORD 1/2-ton pickup, 360, auto, p.s., p.b., air cond., tinted glass, Explorer pkg. \$2495.
'72 DART Swinger 2-dr. hardtop, 318, auto, p.s., AM-FM, radial tires. \$1995.
'71 GREMLIN 4-seater, 6-cyl., 3-speed, X-package. \$1295.
'71 DART Swinger, 318, auto, p.s., low mileage. \$1795.
'70 MAVERICK 2-dr., 6-cyl., 3-speed, low mileage. \$1095.
'68 VALIANT Signet 4-dr., 273, auto, p.s., p.b., air cond., vinyl top. \$995.

REAL ESTATE

LAKE-FRONT LOT at Clear Lake, 29'x297'. Priced to sell.

LARGE 2-STORY, all brick home in country, completely renovated with hydraulic heat, full insulation, new wiring, plumbing, new (w/so) septic system, beautiful kitchen, 30-ft. living room with fireplace on one acre. Chelsea schools.

WATERLOO RECREATION AREA—brand new 1,532 sq. ft. 3-bedroom home with attached finished garage on 2 scenic hilly acres. Chelsea schools.

ON 7 ACRES, 3-bedroom older home on blacktop road with good access to I-94. Grass Lake schools, \$32,000.

WATERLOO-MUNITH AREA—40 rolling acres and nice 2-bedroom ranch home with great expansion possibilities. Full walk-out basement and 2-car garage. \$45,000.

NEWLY BUILT DUPLEX with deluxe features. Village facilities on double lot in Stockbridge. \$38,900.

BUILDING SITES in parcels of 2, 5, 10 acres or more. Soils, level, some rolling and wooded, stream on one 10-acre parcel. Chelsea schools.

WATERLOO REALTY

855 Clear Lake
JOANN WARYWODA, BROKER
Phone 475-8674

Evenings: Steve Suliman, salesman and licensed builder, 475-1748
Sue Lowe, 475-2377.

Transportation

Specials
High-mileage cars to be sold at wholesale.

'72 FORD Custom Club wagon van, 302, auto, p.s., p.b., 12-passenger, aux. heater. \$1725.
'72 DODGE Polara 4-dr. sedan, V-8, auto, p.s., p.b., air cond., radial tires. \$785.
'69 CHRYSLER Newport 4-dr. sedan, V-8, auto, p.s. \$895.
'68 DODGE Polara 4-dr., V-8, auto, p.s., p.b., air cond., rust-proofed. Good transportation. \$650.

Village

Motor Sales, Inc.
IMPERIAL - CHRYSLER
DODGE - PLYMOUTH
Phone 475-8661
1185 Manchester Rd., Chelsea
Hours: 8 a.m. to 6 p.m.
Tues. thru Fri. Until 9 Monday
9 a.m. to 1 p.m. Saturday

MOVING SALE—China, cabinet, refrigerator, household items and accessories, and clothing. 611 Flanders St. March 13-14, 9 to 5.

YES

WE ARE MAKING
LONG-TERM FARM
REAL ESTATE
LOANS

SEE US

Federal
LAND BANK
Association

P. O. Box 1006
Ph. 769-2411 3645 Jackson Rd.
Ann Arbor, Mich. 48106

WALLPAPER

and FABRICS
Largest selection in area.
Play area for children.

D.E. HOEY and SONS
3515 Broad St., Dexter
Ph. 426-8119

WALLPAPER

and FABRICS
Largest selection in area.
Play area for children.

D.E. HOEY and SONS
3515 Broad St., Dexter
Ph. 426-8119

WALLPAPER

and FABRICS
Largest selection in area.
Play area for children.

D.E. HOEY and SONS
3515 Broad St., Dexter
Ph. 426-8119

WALLPAPER

and FABRICS
Largest selection in area.
Play area for children.

D.E. HOEY and SONS
3515 Broad St., Dexter
Ph. 426-8119

WANT ADS

BUILDERS—House and barn roofing, all types of roof repair, aluminum storm windows and doors, aluminum siding and gutters, awnings, porch enclosures, garage and room additions, cement work. Call Joe Hayes for free estimates, Manchester 426-8520.

Are You Building

Your Own Home?

Construction money available for residential homes. Marflax Corp. Ann Arbor. Call 685-6166.

Automotive

Rust Proofing
Cars and Trucks

Village

Motor Sales, Inc.
IMPERIAL - CHRYSLER
DODGE - PLYMOUTH
Phone 475-8661
1185 Manchester Rd., Chelsea
Hours: 8 a.m. to 6 p.m.
Tues. thru Fri. Until 9 Monday
9 a.m. to 1 p.m. Saturday

All Insurance Needs

In the convenience of your own home — or mine

N. H. Miles, Allstate
Call GR 5-8334 after 6 p.m.

BOB'S LOCK & KEY

Complete Locksmithing Service
Commercial, Residential,
Automotive
Luggage locks repaired.
475-9071

REAL ESTATE

LAKE-FRONT LOT at Clear Lake, 29'x297'. Priced to sell.

LARGE 2-STORY, all brick home in country, completely renovated with hydraulic heat, full insulation, new wiring, plumbing, new (w/so) septic system, beautiful kitchen, 30-ft. living room with fireplace on one acre. Chelsea schools.

WATERLOO RECREATION AREA—brand new 1,532 sq. ft. 3-bedroom home with attached finished garage on 2 scenic hilly acres. Chelsea schools.

ON 7 ACRES, 3-bedroom older home on blacktop road with good access to I-94. Grass Lake schools, \$32,000.

WATERLOO-MUNITH AREA—40 rolling acres and nice 2-bedroom ranch home with great expansion possibilities. Full walk-out basement and 2-car garage. \$45,000.

NEWLY BUILT DUPLEX with deluxe features. Village facilities on double lot in Stockbridge. \$38,900.

BUILDING SITES in parcels of 2, 5, 10 acres or more. Soils, level, some rolling and wooded, stream on one 10-acre parcel. Chelsea schools.

WATERLOO REALTY

855 Clear Lake
JOANN WARYWODA, BROKER
Phone 475-8674

Evenings: Steve Suliman, salesman and licensed builder, 475-1748
Sue Lowe, 475-2377.

SWIM WEAR

Good selection.
It's all new.

Use our
Easy Lay-Away Plan

DANCER'S

CARPENTER—New construction, remodeling, additions. Call for free estimates. Evenings, 475-1566.

NOW IS THE TIME to get your power mower, tiller or tractor tuned up and ready for spring. Factory authorized engine service. Genuine parts. Chelsea Hardware Gard 'N Saw Annex, 475-1121. We can pick up and deliver.

WALLPAPER

and FABRICS
Largest selection in area.
Play area for children.

D.E. HOEY and SONS
3515 Broad St., Dexter
Ph. 426-8119

WALLPAPER

and FABRICS
Largest selection in area.
Play area for children.

D.E. HOEY and SONS
3515 Broad St., Dexter
Ph. 426-8119

WALLPAPER

and FABRICS
Largest selection in area.
Play area for children.

D.E. HOEY and SONS
3515 Broad St., Dexter
Ph. 426-8119

WALLPAPER

and FABRICS
Largest selection in area.
Play area for children.

D.E. HOEY and SONS
3515 Broad St., Dexter
Ph. 426-8119

WALLPAPER

and FABRICS
Largest selection in area.
Play area for children.

D.E. HOEY and SONS
3515 Broad St., Dexter
Ph. 426-8119

WALLPAPER

and FABRICS
Largest selection in area.
Play area for children.

D.E. HOEY and SONS
3515 Broad St., Dexter
Ph. 426-8119

WALLPAPER

and FABRICS
Largest selection in area.
Play area for children.

D.E. HOEY and SONS
3515 Broad St., Dexter
Ph. 426-8119

WALLPAPER

and FABRICS
Largest selection in area.
Play area for children.

D.E. HOEY and SONS
3515 Broad St., Dexter
Ph. 426-8119

WALLPAPER

and FABRICS
Largest selection in area.
Play area for children.

D.E. HOEY and SONS
3515 Broad St., Dexter
Ph. 426-8119

WALLPAPER

and FABRICS
Largest selection in area.
Play area for children.

D.E. HOEY and SONS
3515 Broad St., Dexter
Ph. 426-8119

WANT ADS

General Carpentry
Also Repairs
Chelsea Ph. 475-9209

GAR - NETT'S

Flower & Gift Shop
Your Friendly Florist
112 E. Middle St., Chelsea

PHONE 475-1400

Funeral Flowers
Wedding Flowers
Cut Flowers (arranged or boxed)
Potted Flowering Plants
Green Plants - Corsages
WE DELIVER

QUALITY ROOFING—Roofing, siding, repairs. Free estimates. 428-3185 or 971-4339.
APARTMENT in duplex in North Lake area. 2 bedrooms, carpeted. Stove and refrigerator furnished. Full basement. No children or pets. Ph. 426-3737.

SHOES FOR REPAIR picked up and delivered every Saturday at Patsy's Cleaners, 113 Park St., Chelsea, Mich.

GEORGE W. SWEENEY

HEATING
Licensed Contractor
Furnaces, air conditioning,
and sheet metal work.
Phone 475-1867

ALCOA ALUMINUM SIDING SPECIALIST—Since 1938. All work covered. Everything for outside beauty and insulation. William Davis, 663-6635.

FOR RENT—Country duplex, 1 bedroom. Clean, quiet, carpeted. Single or couple only. No pets. Available now. \$125 per month. References and deposit. 426-4056.

Rolling Home Sites

Most scenic land to be found. One owner for past quarter-century. Will build to suit. Phone 426-2222, 4 to 8 p.m.; 1-313-227-1261, 9 a.m. to 5 p.m., Monday-Friday, or 475-1148, anytime.

Special of the Week

1971 BUICK LeSABRE
4-dr. sedan, air cond.
\$1695

USED CARS

1973 PONTIAC Catalina 4-dr. hardtop, 31,000 miles. \$2295
1972 BUICK LeSabre 4-dr. hardtop, air cond. \$2295
1969 CHEVROLET Caprice 4-dr. hardtop, air cond. \$1095
1969 FORD LTD 4-dr. sedan, air cond. \$795
1967 FORD Galaxie 500 2-dr. hardtop. \$495
1965 DODGE pickup. \$495
1965 CHEVROLET Biscayne 4-dr. sedan. \$395
1967 FORD Galaxie 500 2-dr. sedan. \$195
1968 PLYMOUTH Fury 2-dr. hardtop. \$195
1967 PLYMOUTH Fury Wagon. \$195
NEW OIL DRUMS for sale, \$4 ea.

Mon. - Tues. - Wed. - Fri. 8:00-5:30
Thurs., 8:00-9:00
Sat., 8:00-3:30

SPRAGUE

Buick-Olds-Opel, Inc.
Phone 475-8694
1500 S. Main St., Chelsea

SUPER STUFF sure nuff! That's Blue Bistre for cleaning carpets. Rent electric shampooer, \$1. Chelsea Hardware.

BECKER

MEMORIALS
6033 Jackson Road
ANN ARBOR, MICHIGAN

WANT ADS

GETTING MARRIED? Traditional and contemporary invitations and accessories. Large selection. Satisfaction guaranteed. John's Shop, 475-7800 after 5 and week-ends. 40

CLOGGED

SEWER
Reynolds Sewer
Service
We Clean Sewers Without Digging
Drains Cleaned Electrically
FREE ESTIMATES
2-YEAR GUARANTEE
Phone Ann Arbor NO 2-5277
"Sewer Cleaning Is Our Business—
Not a Side Line"

PAINTING, interior and exterior, reasonable rates, with good references. For free estimates call 426-8395, after 4 p.m.

SECURITY

GUARDS
Chelsea, Manchester
Whitmore Lake areas.
Phone 761-5815
for appointment,
or apply at
290 S. Wagner Rd.
Ann Arbor
SANFORD SECURITY SERVICE,
INC.

PAINTING, interior and exterior, reasonable rates, with good references. For free estimates call 426-8395, after 4 p.m.

THORNTON

QUALITY CONSTRUCTION—This builder's home offers many outstanding features, including custom fireplace and beautiful room. 3 bedrooms and 2 full baths. Located in the village.

AT WOLF LAKE—Good starter home in nice neighborhood. 2 bedrooms, nice living-dining area. All appliances included

WANT ADS

- YOUNG -

We list and sell lake, country and town properties. Eugene Young, Real Estate & Builder, 878-3732, 11590 Dexter-Pinckney Rd., Pinckney 48169. x34tf

Roofing, Aluminum
& Vinyl Siding
Gutters, Storms
& Window Trim

For Free Estimate
Call (517) 851-8657

Mills
Construction Co.

3986 M-52, Stockbridge 39tf

WE BUY vacant land, lots, acreage, or farms. Cash or terms. Washtenaw Active Homes. Call 485-7365. x23tf

Farm Seeds
& Fertilizer

Contact

R. O. Burgett & Son
Grass Lake, Mich.
Phone (517) 522-4090 x39

Carpet & Linoleum
Remnants

10'x12" Gold Tweed Shag rug. Bound. Reg. \$199.95. Sale \$139.95

11'x20" Green Spish. Used 1 yr. Reg. \$322.00. Sale \$161.00

12'x21" Greige Twist Shag. Reg. \$304.50. Sale \$149.95

12'x18" Blue-Brown Commercial. Reg. \$268.80. Sale \$139.95

12'x12" Rust Tweed Nylon. Reg. \$145.20. Sale \$72.00

12'x14" Gray rubber back, indoor-outdoor. Reg. \$207.75. Sale \$75.00

8'6" x 12'10" Beige. Sale \$15.00

12'x9" Blue Shag. Reg. \$95.40. Sale \$39.95

9'x11'10" Used. Sale \$12.00

9'x12" Hen Pheasant, rubber back, nylon. Reg. \$71.40. Sale \$39.95

12'x12" Spring Green Nylon Shag. Reg. \$117.20. Sale \$59.95

12'x8'10" Rust Sculptured Nylon. Reg. \$95.00. Sale \$49.95

8'10" x 10'6" Rust Nylon Shag. Reg. \$114.90. Sale \$59.95

10'1" x 11'7" Light Green Lees Celebration. Reg. \$155.00. Sale \$99.50

10'6" x 11'10" Blue Nylon Shag. Reg. \$97.50. Sale \$49.95

12'x8'4" Off White Nylon Shag. Reg. \$99.95. Sale \$49.95

9'x19'2" Orange Brown Heavy Duty Commercial. Reg. \$246.00. Sale \$129.95

12'x9'11" Blue Tweed, rubber back. Reg. \$75.00. Sale \$39.95

12'x13" Heavy Green Nylon Twist. Reg. \$189.70. Sale \$79.95

Approximately 35 others.

Armstrong Fancy Free cushion back inlay vinyl. Reg. \$9.95. Sale \$4.95

Assorted inlay remnants for small rooms, drawer and cupboard liners.

Merkel

Home Furnishings

Open Mon. & Fri. Til 9

Ph. 475-8621 x39

FARM WORK WANTED, beginning May. Good worker, wants to learn farming. Some experience. Pay negotiable. 426-4773, Thursday, Friday nights, weekends. x39

WANT ADS

HAMMOND ORGAN teachers wanted to teach in their own homes. Call Grinnell Brothers, Ann Arbor, 682-5667.

FOR REAL DOLLAR SAVINGS be sure and see us before you buy any new or used car. Palmer Motor Sales, Inc. Your Ford Dealer for over 50 years. 2tf

Sande's Texas Tack
12005 SCIO CHURCH RD.
CHELSEA, MICH.
475-2596

Complete line of Western horse equipment. Also boots, hats, purses, and wallets.

OPEN EVERY DAY 9-9
10% 4-H Discount

OFFICE SPACE for rent. Call 475-7600, ask for owner. 20tf

PLASTERING, lathing and dry wall. James O. Johnson, 426-3652 or 426-8191. x30tf

WANT TO RENT—Hay and corn ground for this season. Call 475-2771. x28tf

FOR SALE — Indian cents, postcards, books, foreign coins. Australian opals, and other articles. Lawrence E. Guinan, 1571 Sugar Loaf Lake. Call 475-2317. x37tf

WEDDING STATIONERY — Prospective brides are invited to see our complete line of invitations. The Chelsea Standard. Ph. 475-1371.

REDUCE EXCESS FLUIDS with Fluidex tablets, only \$1.89 at Chelsea Pharmacy. x49

Complete
Body Repair
Service

Bumping - Painting
Windshield and Side Glass
Replacement

Free Pick-up & Delivery
Open Monday Until 9

CONTACT DON KNOLL
FOR FREE ESTIMATE

Village
Motor Sales, Inc.

IMPERIAL - CHRYSLER
DODGE - PLYMOUTH

Phone 475-8661

1185 Manchester Rd., Chelsea
Hours: 8 a.m. to 6 p.m.
Tues. thru Fri. Until 9 Monday.
9 a.m. to 1 p.m. Saturday

1969 CHEVY 1/2-ton pickup, V-8, stick, radio, no rust, excellent condition, extras, \$1,100 or best offer. Call 475-2154 evenings. x39

HIGH AND DRY one-acre building site for sale. One mile east of Chelsea. \$7,500 terms. Call 475-9258. x36tf

Big Savings
On Beautiful Roses

Save up to 37% on two rose special offers. Also, let me show you a nice selection of fruit trees, ornamentals, and landscaping trees and shrubs.

Elson Bettner
(313) 475-9223

15700 Cassidy Rd.
Grass Lake, Mich. 49240

STARK BRO'S
Nurseries and Orchards Co.

HOUSE FOR SALE — 2-bedroom, large living room, carpeted, kitchen and dining area, carpeted bath. Utility room, breezeway, plus attached 2-car garage. Located on 1 acre, fully shaded with garden to rear. Located 1/4 mile north of Stockbridge. Phone (517) 851-8198 before 11 a.m. or after 3 p.m. x40

WANT ADS

NOW

Full Time
Complete
Body Shop
Service

Stop in For An Estimate

PALMER FORD

222 S. Main St.
475-1301

SUNFLOWER SEEDS, Wild Bird Feed. Wayne dog feed and specialty feeds. McCalla Feed Service, Old US-12. Ph. 475-8153. 25tf

PIANO TUNING, Chelsea and area. Facilities for reconditioning and rebuilding. Used piano sales; reconditioned grands and verticals. E. Ecklund, 426-4429. x50tf

EVINGER REAL ESTATE, Alpine St., Dexter. Phone 426-8518. x18tf

SEE US for transit mixed concrete. Klump Bros. Gravel Co. Phone Chelsea 475-2530, 4920 Love-land Rd., Grass Lake, Mich. x40tf

TRAVEL TRAILERS — 13-ft. and up; 10x55 ft. trailers. John R. Jones Trailer Sales, Gregory, Mich. Phone 498-2655. x43tf

ELECTRICAL WIRING of all types New and rewiring. Ph. 426-4855. x20tf

'WE'RE NOT CHEAP'
... but we're good!

If you want corners cut and shoddy workmanship—don't come to Hilltop. But—if you want quality merchandise and the job done right—then—come to Hilltop. We get in—we do the job—and we get out. Whether it be building or remodeling there is no one in Washtenaw County better equipped than Hilltop to handle all of the home-owner's needs.

PLUMBING
ELECTRICAL
HEATING
SEPTIC TANKS & FIELDS.

Hilltop, Inc.
1414 S. Main St. - Chelsea
475-2949 x32tf

COUNTRY APT. for rent to non-smoking couple. No pets. Utilities included. (Moved to Calif. approx.) Call nights, 475-8334 for appt. x30tf

STOVE for sale—Frigidaire deluxe model, Copperstone, 3 1/2 years old. Remodeling our kitchen. 475-7678. x27tf

INTERESTED IN SAVING this winter? Who isn't you say. You may be able to save on your fuel bill and be more comfortable at the same time. During the next snowfall make this simple test: Compare the blanket of snow on your roof with that on the other homes in the neighborhood. If the snow is melting off your roof you are losing precious, expensive heat. Insulate now, save heat and keep cooler this summer. Call Hel-lec Electric and Insulating at 475-7978 after 6 p.m. for more information. We can insulate your home or you can do it yourself with our machine. x35tf

Farmers - Homeowners
Campers

Here is low-cost blackout protection.

End your power failure worries now!

Tractor-driven or air-cooled electric alternators to meet your requirements.

Take electric power with you.

We have Pincoor Power Plants to fit your needs.

Call
Heller Electric
Evenings at 475-7978. 35tf

NOTICE—On March 7, 1975, between 8 a.m. and 3 p.m. at 679 S. Lima Center Rd., someone ran over our sheep dog. We want someone to know that we loved her dearly, and hope that you will be able to live with your conscience. The Charley Fredette family. x39

FOR SALE—Alto saxophone. Very good condition, \$175. Call 426-4455. x39

EVERYWHERE
IN MICHIGAN

Real Estate One

WHY LIST WITH
REAL ESTATE ONE?

WE FIND BUYERS — over 5,000 homes sold each year. (A city the size of Traverse City, Monroe, or Ypsilanti.)

Phone 475-8693

WANT ADS

SEAMLESS ALUMINUM eaves, troughs, roofing, siding, and carpentry work of all kinds. Experienced installers. All work guaranteed. For free estimate, call R. D. Kleinschmidt Co., 426-8586. x31tf

PLANNING ON INSULATING this winter? When buying insulation remember to compare quality as well as price. Insulation's effectiveness is in its resistance to heat flow which is measured in "R" value. Cellulose or wood fiber insulation has an "R" value of 4.17 per inch. Compare this to the "R" value of various synthetic solid fiber materials which tend to conduct heat. For more information call Heller Electric after 6 p.m. at 475-7978. x34tf

MOVING, must sell—Dining room set, corner china cabinet, buffet, table and chairs, mahogany. Call Margaret Raker, 475-8259 or 475-8186. x39

LOST—Female beagle. Black and red with some brown on her back. Tag reads: Mort Riser, 3900 Ely Rd., Manchester. \$25 Reward. Phone 475-1096. x39

WANTED TO RENT—Small house or 2-bedroom apartment in the Chelsea area. Ph. 475-2017. 41

SPRING
IS HERE!

Stop in
and see our
big selections
in all depts.

DANCER'S

REAL ESTATE

200 FT. of lake frontage on Michigan Center Lake, Jackson County. Excellent 4-bedroom home, aluminum sided, 2 baths, 38'x18' living room with stone fireplace, formal dining room and breakfast room, full basement, 2-car garage. \$32,900. x32tf

EAST OF GRASS LAKE, close to 1-94, lovely carpeted 3-bedroom ranch, aluminum sided, on one acre of land, modern kitchen, walk-out basement with extra kitchen and bath, 2-car garage. Low \$30's. x39

KIRA HENRY
REAL ESTATE
(517) 764-1416
1630 Donnelly Rd.
Jackson 49201

LOST — German Shepherd with yellow nylon collar, on Pierce Rd. area. Reward. Phone 475-2382. x39

St. Patrick's Day
DANCE
Saturday, March 15
9 p.m. to 1:30 a.m.
CHELSEA ROD & GUN CLUB

Sold Out, Sorry!

Music By
JIMMIE ROMINE
and THE LAKERS
\$8 per couple
Buffet lunch, snacks, set-ups
and ice furnished.
PUBLIC INVITED
For Tickets Call
Gary Bentley, 475-8762
or Roger Davis, 475-7187. x39

CHELSEA FIRM has part-time work for experienced operator of Multilith 1250. Days, evenings or week-ends. Phone 475-2700. x9

DOG FREE to good home. German Shepherd. Loves kids and other dogs. 475-7869. x39

FOR SALE—1969 Chevrolet pickup, 1/2-ton, V-8, stick. Nice truck. Good tires. Call 475-7701. x39

FREE PUPPIES, 6 weeks, German shepherd and Border Collie. 426-4319. x39

FOR SALE—Riding mower, used. Simplicity. \$40. 426-8935. x39

PAINTING & DECORATING—Exterior and interior house specialists. Call for free estimates. Michael Lee, 426-2394. x39

Sewing Class
8 weeks - April 1 to May 27
15 for session
7-9 p.m. Tuesdays
Sign up at Store
Minimum 15 students
Register at
Vogel's Store
103 S. Main St. 41

FOR SALE—Cast iron square bath tub, excellent condition. Also double kitchen sink. Call 475-4476. x35

FOR SALE—3 7.00x16 6-ply truck tires on rims. Less than 300 miles on them. \$100. Edward Rauer, 475-2782. x40

WANT ADS

CARPENTRY WORK and repairs, also roofing and siding. Call Mr. Coburn, 475-2393. x40tf

PAINTING—Interior, exterior. Low rates. By job or hour. Unemployed professional. Satisfaction guaranteed. No job too small. Call 994-0619, evenings. x40

LECITHIN! Vinegar! B6! Kelp! Now all four in one capsule, ask for VB6+, Chelsea Pharmacy. x49

UPSTAIRS APT. for rent, unfurnished except for refrigerator and stove. No children or pets. Call 475-8210. x37tf

FOR SALE—Butter, grains, honey, peanut, bulk, stone-ground flours and more at Wendy's natural Foods, 555 W. Michigan Ave., Saline. 1-429-2225. x39

ZERO DOWN, FHA or VA, village living, 5-room ranch with 3 bedrooms, fenced yard and mature trees, and garage. Lincoln Realty. 482-6117. x43

FOR SALE — Used wood Noddy clarinet, good condition. Call 475-8759, after 5 p.m. x40

1974 TOYOTA pickup. Low mileage, reasonable. Call (313) 475-9085. x40

HELP WANTED — Floor maintenance and painting. Will train. Call 475-8633, ask for Mrs. Baldwin. x39

FOR SALE — 1971 10 1/2 ft. truck camper, \$1,000 or best offer. Ph. 475-8763. x36tf

ENGLISH SETTER for sale—Female, spayed, 4 yrs. old. Friendly, gentle dog. Needs acreage to run. \$20. Ph. 453-3852. x40

BUILDING — Big jobs or small. Also back-hoe. Phone 426-4215. x14

MAKE OFFER—1972 Ski-doo 335E Olympic and custom 4 machine trailer. Call 475-1578 evenings. x39

HOUSECLEANING JOB wanted — Is your house ready for spring? If not, call me 475-1709. x39

Card of Thanks

IN MEMORIAM—Charles P. Slane. I cannot say, and I will not say that he is dead—he is just away! With a cheery smile, and a wave of the hand, he has wandered into an unknown land, and left us dreaming how very fair it needs must be, since he lingers there. And you, O you, who the wildest yearn for the old-time step and the glad return, think of him faring on, as dear in the love of there as the love of here; think of him still as the same, I say: He is not dead—he is just away!

From his wife,
Mrs. Charles P. Slane
and nine children.

CARD OF THANKS

I would like to express my thanks to all our friends and neighbors for their kindness, thoughtfulness, and many prayers during the loss of our mother. And a special thanks to the Rev. Carl Schwarm and the Rev. James Stacey for your extra support, prayers, and help through this time of sorrow. We are very grateful to everyone; words can never express how we feel. Your kindness will always be remembered. And may God bless you all. Alan and Maxine White.

CARD OF THANKS

I wish to express my thanks and appreciation for all the cards, gifts, flowers, visits, and prayers which were extended to me in the hospital and since my return home. A special thanks to my family; also Chuck and Mary Ann Eder. You were all my rock of strength. May God Bless each and everyone. Sincerely,
George Ellenwood

CARD OF THANKS

The relatives and friends of the late Mrs. David Lixey have given a gift in her memory to the McKune Memorial Library with the purpose of installing new light fixtures on either side of the door. The library board has accepted this gift with appreciation and thanks to the givers.
McKune Memorial Library.

WANT ADS

CARD OF THANKS

We wish to express our appreciation and thanks to our neighbors, friends and relatives for their many acts of kindness and sympathy extended to us during our recent bereavement.

The family of Lois Lixey

Legals

MORTGAGE SALE

Default having been made in the terms of a mortgage made by RILEY J. HAYES and LORETTA E. HAYES, wife of RILEY J. HAYES, to GRAHAM MORTGAGE CORPORATION, dated December 1, 1971, and recorded December 10, 1971, in Liber 1380, page 628, Washtenaw County Records, and assigned by said mortgagee to STATE SAVINGS AND TRUST COMPANY, INC., by assignment dated December 1, 1971, and recorded December 10, 1971, in Liber 1380, page 628, Washtenaw County Records, on which mortgage there is claimed to be due at the date thereof principal and interest the sum of \$21,169.72.

Under the power of sale contained in said mortgage and pursuant to the statute in such case provided, notice is hereby given that on the 27th day of March, A.D. 1975, at 10 o'clock a.m., local time, said mortgagor will be foreclosed by a sale at public auction to the highest bidder at the West Entrance of the Washtenaw County Building, the City of Ann Arbor, Washtenaw County, Michigan, that being the place where the Circuit Court of said County is held of the premises described in said mortgage, or so much as may be necessary to pay the amount due with interest at 7 1/2 percent per annum, and all legal costs and charges.

Said premises are located in the Township of Ypsilanti, Washtenaw County, Michigan, and are described as: Lot 148, Grove Park Homes Subdivision, as recorded in Liber 18, Pages 72 and 73 of the County of Washtenaw and State of Michigan.

The redemption period is six months from time of sale.

February 28, 1975.

State Mutual Savings and Loan Association, Assignee,
Leithaus and Leithaus, P.C.,
One State Street, Suite 215,
East Detroit, Michigan 48021
Attorneys for said Feb. 20-27, Mar. 6-13-75

MORTGAGE SALE

Default having been made in the terms and conditions of a mortgage made by DAVID H. RITCHIE and BETTY LOUISE RITCHIE, his wife of Saline, Michigan, to the Cobh Homes Incorporated, a Michigan corporation, of South Lyon, Michigan, Mortgagee, dated the 24th day of September, 1974, and recorded in the office of the Register of Deeds, for the County of Washtenaw and State of Michigan, on the 24th day of September, 1974, in Liber 1451 of Washtenaw County Records, on page 511, on which mortgage there is claimed to be due, at the date of this notice, for principal and interest, the sum of Four Thousand and no hundred and thirty and no/100 Dollars (\$4,330.40). And no suit or proceedings at law or in equity having been instituted to recover the debt secured by said mortgage, or any part thereof. Now, therefore, by virtue of the power of sale contained in said mortgage, and pursuant to the statute of the State of Michigan in such case made and provided, notice is hereby given that on Thursday, the 24th day of April, 1975, at 10:00 o'clock a.m., local time, said mortgage will be foreclosed by a public auction, to the highest bidder, at the West Entrance of the Washtenaw County Building in Ann Arbor, Michigan, that being the place where the Circuit Court for the County of Washtenaw is held, of the premises described in said mortgage, or so much thereof as may be necessary to pay the amount due, as aforesaid, with interest thereon at the interest thereon at ten per cent (10%) per annum and all legal costs, charges and expenses, including the attorney's fees, which said premises are described as follows: All that certain piece or parcel of land situated in the Township of Lodi, in the County of Washtenaw, and State of Michigan, and described as follows: Lot No. 39, "Breeze Acres Subdivision No. 2," part of Sec. 26, T3S, R5E, Lodi Twp., Washtenaw Co., Michigan, as recorded in Liber 18 of the County of Washtenaw and State of Michigan, and recorded in the office of the Register of Deeds, for the County of Washtenaw and State of Michigan, on the 24th day of September, 1974, in Liber 1451 of Washtenaw County Records, on page 511, on which mortgage there is claimed to be due, at the date of this notice, for principal and interest, the sum of Four Thousand and no hundred and thirty and no/100 Dollars (\$4,330.40), including interest at 7 1/2 percent per annum.

Under the power of sale contained in said mortgage and the statute in such case made and provided, notice is hereby given that said mortgage will be foreclosed by

Default having been made in the terms and conditions of a mortgage made by DAVID H. RITCHIE and BETTY LOUISE RITCHIE, his wife of Saline, Michigan, to the Cobh Homes Incorporated, a Michigan corporation, of South Lyon, Michigan, Mortgagee, dated the 24th day of September, 1974, and recorded in the office of the Register of Deeds, for the County of Washtenaw and State of Michigan, on the 24th day of September, 1974, in Liber 1451 of Washtenaw County Records, on page 511, on which mortgage there is claimed to be due, at the date of this notice, for principal and interest, the sum of Four Thousand and no hundred and thirty and no/100 Dollars (\$4,330.40). And no suit or proceedings at law or in equity having been instituted to recover the debt secured by said mortgage, or any part thereof. Now, therefore, by virtue of the power of sale contained in said mortgage, and pursuant to the statute of the State of Michigan in such case made and provided, notice is hereby given that on Thursday, the 24th day of April, 1975, at 10:00 o'clock a.m., local time, said mortgage will be foreclosed by a public auction, to the highest bidder, at the West Entrance of the Washtenaw County Building in Ann Arbor, Michigan, that being the place where the Circuit Court for the County of Washtenaw is held, of the premises described in said mortgage, or so much thereof as may be necessary to pay the amount due, as aforesaid, with interest thereon at the interest thereon at ten per cent (10%) per annum and all legal costs, charges and expenses, including the attorney's fees, which said premises are described as follows: All that certain piece or parcel of land situated in the Township of Lodi, in the County of Washtenaw, and State of Michigan, and described as follows: Lot No. 39, "Breeze Acres Subdivision No. 2," part of Sec. 26, T3S, R5E, Lodi Twp., Washtenaw Co., Michigan, as recorded in Liber 18 of the County of Washtenaw and State of Michigan, and

ASK THE GOVERNOR

by William G. Milliken

Question: Governor, I know you have said and done a lot about the auto industry and its lay-offs, but what about those of us in the construction industry? We're suffering as severely as anyone else during his economic crisis.

Governor: The greatest immediate need facing Michigan is to restore its economy. The most recent unemployment figures compiled by the Michigan Employment Security Commission indicate that Michigan's unemployment rate now stands at 14 percent—clearly an unacceptable level.

I advanced a number of economic proposals in my State of the State Message for this year which will enable Michigan to act decisively to respond to the needs that the people of Michigan face as a result of our economic problems, and several of those proposals will have a substantial positive impact on the construction industry. That industry has been severely affected by the current economic crisis.

One of these proposals is the development of a capital bonding program for some 19 major projects across the state which will require over \$230 million in the next four years. Principal facilities include an outpatient clinic for Wayne State University's Medical School, office buildings and supporting facilities in the State Governmental Complex in Lansing, correctional facilities, State Police facilities, and several higher education projects. I have also recommended that the bonding authority for the Housing Development Authority be expanded by \$400 million dollars to accelerate the building of homes in Michigan.

Additionally, the recent release by President Ford of \$2 billion in federal highway funds will enable Michigan to more than double highway contract lettings planned for the first half of 1975.

Under the terms of that release, most of the funds will be spent on construction in high unemployment areas, and will affect suppliers of cement, aggregate and other construction materials—as well as construction workers—beyond the immediate area of construction.

Question: I can't understand why state government is always in a financial bind. I thought the lottery was supposed to solve all that. Isn't the lottery working as well as it should?

Governor: As a matter of fact, Michigan's lottery has proven to be the most successful state-run lottery in the nation.

Last year, our lottery averaged nearly 5.5 million ticket sales per week, substantially more than New York's 3.5 million or Illinois'

4.8 million. And our total sale of more than 284 million tickets last year was higher than any of all the other 11 states which operate lotteries, including four states with larger populations than Michigan.

But despite the success of our lottery program, the fact remains that it alone cannot begin to meet the needs of the people of Michigan in education, social services, mental health and other programs. The lottery's net contribution to our state budget last year was \$60 million, less than 2 percent of the total budget of \$3.04 billion I recommended for this coming fiscal year, or only approximately enough money to run state government for six days.

While the lottery is an important contributor to our state's revenue, it is obviously not the total answer to our budget problems.

Question: Being Governor, you must get tired of handshaking, picture-taking, and giving interviews. Don't you ever get the feeling that you just would like to forget the whole thing and go home to relax?

Governor: I think that anyone in public life at times feels that way. When the day starts early and goes late and decisions that have to be made are pressing in, the job of being Governor sometimes becomes a frustrating and lonely experience. But I can honestly say that beyond those infrequent moments, I would not trade this opportunity for any other opportunity that might ever be mine. The chance to make a difference in the solution of a problem that plagues the state, the chance to carry out my convictions, and the chance to correct a situation which affects people in a negative and sometimes disastrous way, all make this job extremely worthwhile and rewarding to me.

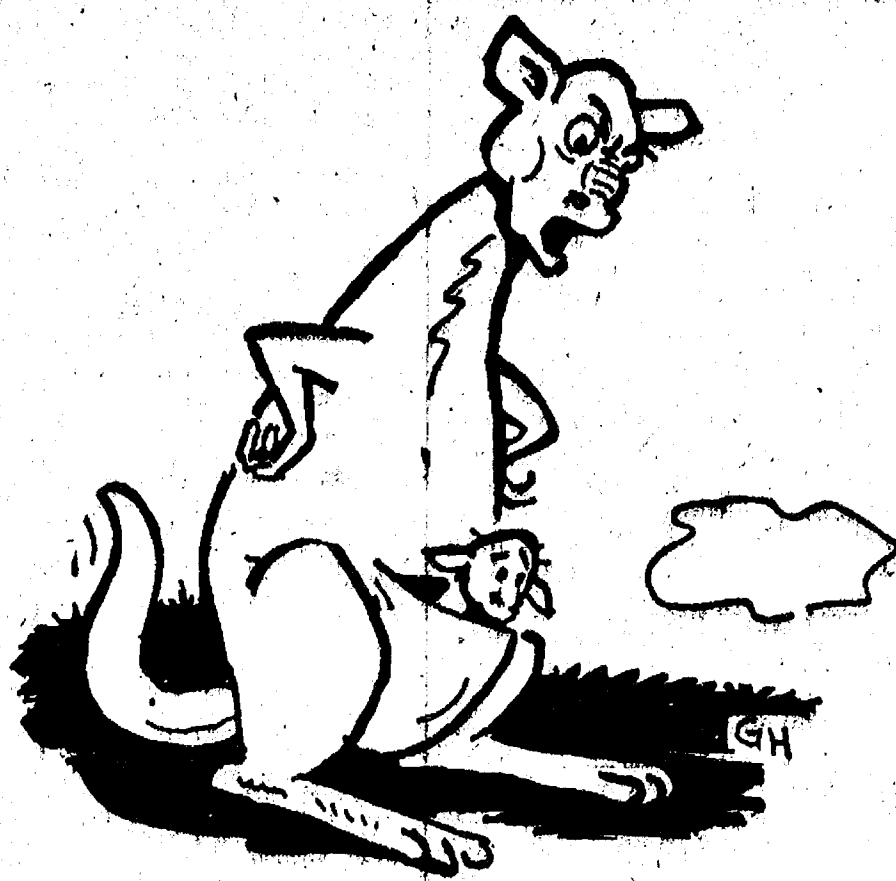
Albion College Plans Jackson Reception for Prospective Students

Albion College will be hosting an informal reception for prospective freshmen and their parents from the Lansing-Jackson-Ann Arbor area on Sunday, March 16. The reception will be held from 2 p.m. until 4 p.m. at the Jackson Holiday Inn.

Members of the admissions staff, college faculty and Albion College students will be present to answer questions pertaining to the various aspects of the college. In addition, there will be a brief presentation and comments by a member of the college's faculty regarding Albion's academic program.

The reception is open to all interested students, parents, alumni, and friends of Albion College.

LAFF OF THE WEEK



"You look beat! ... What time did you get in last night?"

Public Meeting Set Regarding Women's Prison in Pittsfield

Senator Gilbert E. Bursley (R-Ann Arbor) announced today that a public meeting has been set up with the co-operation of the Department of Corrections and the Department of Mental Health regarding the Women's Prison and Reception Center which is under construction in Pittsfield township. The meeting will be held March 21 at 7:30 p.m. in the York Township Hall on Stoney Creek Rd. (York Twp. phone no. 487-8898).

Senator Bursley stated: "The purpose of this meeting is to inform the public of the nature of the new state facilities being built

south of Ann Arbor in Pittsfield township. Over the past few months numerous questions have been raised by the citizens in the area concerning the new facilities. I trust this meeting will provide substantial answers to most of those questions."

According to Senator Bursley: "One of the most frequently raised questions has been: 'What type of security system will be implemented?'"

Senator Bursley said that to assure that this question is fully answered, two things have been done:

Support Your Local Police Committee Formed for County

Formation of a Washtenaw County Support Your Local Police Committee has been announced by the organization's chairman, Ronald Graham, of Ann Arbor. Other officers of the committee are Ruth Eckert and Lynn Horrocks of Ypsilanti, Donald VanCurler of Ann Arbor, and Norm Brehob, Chelsea.

Noting that local police forces, having the solemn and fundamental obligation to protect the lives and property of the citizens of their respective communities, have fulfilled their duties admirably, Graham outlined the reasons for formation of the citizens group.

He cited extreme concern about recent developments in many parts of the country which have imposed new and dangerous burdens on local police. Harassment and outright attacks against the police, in many instances organized and controlled by subversives and criminals, have increased alarmingly. Court decisions have placed unreasonable restrictions on the forces of law and order, while freeing many criminals from prison and imposing only the mildest of sentences on others.

Graham added that many politicians have bowed to the disruptive tactics and outright threats of organized pressure groups. Of specific and particular concern is the subtle effort being made by the federal government, through tempting grants extended via The Police Foundation and The Law Enforcement Assistance Administration (LEAA), to gradually dilute and eliminate the independence, and therefore the responsibility to their community, of local police forces.

Graham mentioned that last Oct. 30, The Michigan Commission on Criminal Justice presented proposals for goals and standards at a hearing in Lansing which would regionalize Michigan police agencies. While they were presented by the MCCJ, the program is part of a national effort of the LEAA's National Advisory Commission on Criminal Justice Standards and Goals. Should the legislation be adopted to implement this pro-

gram, Graham says, the end results would be a reduction from the present 725 law enforcement agencies to 33 regional departments under the control of an appointee of the Governor.

The Washtenaw County SYLP Committee invites the active assistance of all concerned individuals in the community in working to:

- Support our local police in the performance of their duties;
- Oppose all harassment or interference with law enforcement personnel as they carry out their assigned tasks;
- Reject any "Civilian review boards" or other outside "supervision" of our police;
- Prohibit the creation of any national police force, or any other centralized authority, which would replace or control our local police;
- Oppose any and all efforts to subsidize, regionalize, or federalize our local police, since any loss of their independence from outside controls will inevitably lead to a loss of our protection and safety as well;
- Accept our responsibilities to our local police, to defend them against unjust attacks, make them proud and secure in their vital profession, and to offer them our support in word and deed wherever possible.

Area citizens who would like to join in this effort, founded with organizational assistance from the John Birch Society, or for additional information, may call Ron Graham at 683-3321 or Norm Brehob at 475-7621. One of the first activities of the organization will be the arrangement for a talk to be given by Timothy R. Heenan, nationally known lecturer and former undercover police operative, on Wednesday evening, March 19, at the Campus Inn Hotel in Ann Arbor on the subject: "Why Washington Wants to Control our Police."

Nearly \$4 Million Monthly Paid In County Social Security Benefit

A record \$3,928,000 is being paid out in Social Security Benefits each month to 21,993 residents of Washtenaw county, according to Robert A. Kehoe, Social Security district manager.

Of the Social Security Benefits paid to beneficiaries each month \$2,344,500 went to retired workers; \$1,384,600 to disabled workers and \$1,198,900 to dependents and survivors of retired and disabled workers.

Benefits paid to Chelsea residents as of June 30, 1974 are as follows: \$136,400 to retirees, \$20,000 to the disabled, with widows and their dependents receiving \$67,000. Total Chelsea residents receiving benefits numbered 1,274.

Beneficiaries for Social Security in Dexter were considerably less. Total beneficiaries numbered 784; with \$97,700 going to retirees, followed by \$44,800 to widows and

their dependents and \$9,700 paid to the disabled.

In Manchester, beneficiaries numbered 716; with retirees receiving \$74,300, the disabled \$6,900, and \$40,400 going to widows and their dependents.

Retired workers and their dependents account for about 60 percent of all those receiving payments. The survivors of workers who have died, including children and their widowed mothers, aged or disabled widows and widowers, and aged dependent parents make up close to one-quarter of all those receiving Social Security payments. The remaining 15 percent are disabled workers and their dependents.

Kehoe stated that nationally, by the end of December, 1974, Social Security payments totaled \$58.5 billions annually and were being paid to 31 million men, women and children. Social Security is more than a program for the elderly, Kehoe concluded. Almost 24 percent of all beneficiaries are under age 60, and 15 percent are under age 22.

The Social Security District Office for residents of Washtenaw county is located at 2929 Plymouth Rd., Ann Arbor. The office is open Monday through Friday, 9 a.m. to 4:45 p.m., except on national holidays. The telephone number to use to obtain information about Social Security is 994-3310.

MSU Experiment Station Week Set By Governor
Lansing—Governor William G. Milliken has directed that March 16 through 22 be declared Michigan Agricultural Experiment Station Week, for observation throughout the state.

The occasion is the 100th anniversary of the founding of the first agricultural experiment station in 1875. Experiment Station Week coincides with Michigan State University's 60th annual Farmers' Week; an event also dedicated to agricultural research.

In making the declaration, Milliken cited the major impact of agricultural research in creating the high standard of living enjoyed in Michigan and the U.S.

"The major achievements of scientists of the Michigan Agricultural Experiment Station have been many and varied throughout its history," said Milliken. "Their discoveries of new crops, farming practices, methods of pest control and improved livestock production techniques have changed the business of producing food greatly."

Milliken also pointed out the importance of current research efforts at the Michigan Agricultural Experiment Station. "Critical to today's needs are its research investments which reflect concern for an adequate and safe food supply with efficient use of land, water and all forms of energy," he said.

Marylynn Doletsky Granted Degree at MSU

Receiving a bachelor's degree in Elementary Education from Michigan State University last Saturday, was Marylynn Doletsky of 9570 Fleming Rd.

Marylynn was one of 1,463 candidates for degrees to be awarded at the winter term commencement exercises Saturday, March 8 in the MSU Auditorium.

The candidates included 975 bachelors, 354 masters, 103 doctoral, nine educational specialists, 20 doctors of human medicine and two doctors of osteopathic medicine.

U. S. Congressman James O'Hara delivered the commencement address at the 3 p.m. ceremony for undergraduate degrees.

Emergency Loans Now Available Through FHA

Effective Feb. 27, the Secretary of Agriculture declared Washtenaw county eligible for emergency loans through the Farmers Home Administration. The designation was based on crop losses which resulted from a cold wet spring, followed by a dry summer and an early fall freeze.

Emergency loans will bear a 5 percent interest rate and may be amortized over a five-year period. To qualify one must have been farming in 1974 and suffered yield reduction as a result of the weather conditions mentioned above.

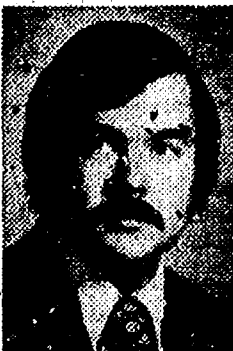
Applications will not be received after Nov. 28, 1975 for production losses or after April 28, 1975 for physical losses suffered.

LAND WANTED

Any size parcel in the Chelsea area. Property is selling. I can help you with the many details.

Real Estate One.
OF WASHTENAW

REALTORS
1196 M-52, Chelsea 475-8693



BOB MYRMEL
Manager
EVE 428-8988

— OFFICIAL NOTICE — SPECIAL MEETING OF THE DEXTER TOWNSHIP BOARD

will be held
TUESDAY, MARCH 18, 1975 - 8 p.m.
at the Township Hall, 6880 Dexter-Pinckney Rd.

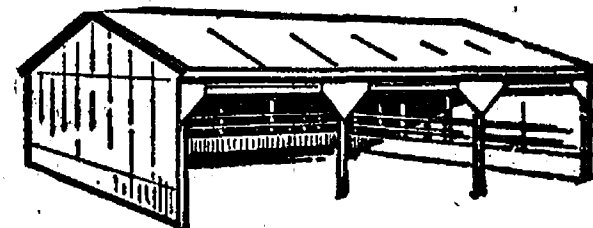
Item to be discussed:

The Dexter Township Zoning Ordinance, as requested by the Portage & Base Lake Property Owners Association.

WILLIAM EISENBEISER
Dexter Township Clerk

POLE BUILDINGS (GO UP EASILY...ECONOMICALLY)

ANY TYPE - ANY STYLE - ANY SIZE
Residential - Agriculture - Commercial
PROMPT CONSTRUCTION DATES
Low prices and high quality workmanship.



OWEN CUSTOM BUILDERS
LICENSED & INSURED - MANY SATISFIED CUSTOMERS
JACKSON (517) 769-2669

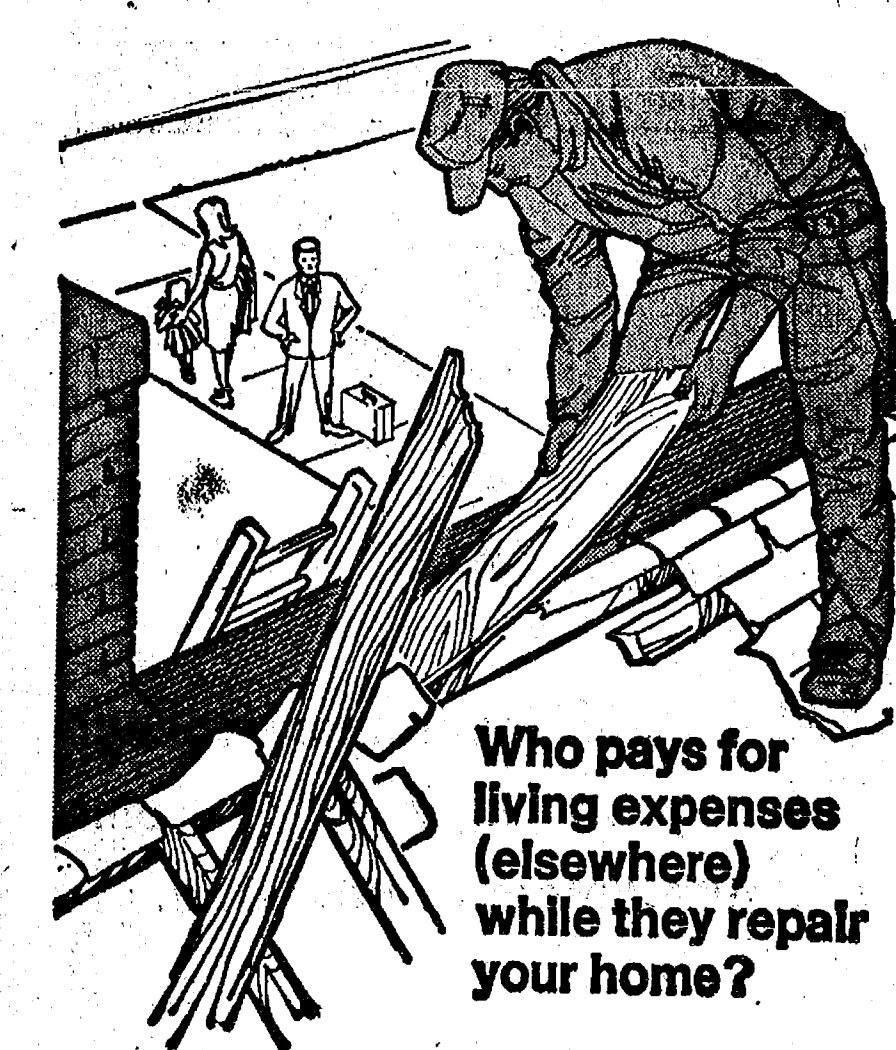
The Economy May Be Down, ... But So Are Building Costs!

- 1) Dimensional lumber is down one-third from last year — saving you money on rough-in.
- 2) Copper prices are down 20% — saving you money on electrical and plumbing.
- 3) Reasonable rates thru FARLEY CONSTRUCTION saves you money on labor.

To Get The Most for Your Money Be Prepared to...

- 1) Have your home site located and your home plans ready.
- 2) Watch the interest rates as they come down.
- 3) Call FARLEY CONSTRUCTION to insure reasonable and prompt action.

FARLEY CONSTRUCTION
475-7643
ADDITIONS - REMODELING - REPAIRS
CONCRETE WORK



Who pays for living expenses (elsewhere) while they repair your home?

Most policies provide the coverages you expect—fire, lightning, storms, riots, vandalism and the like. They cover the cost of repairs due to these losses. But have you thought about the cost of living elsewhere if your home has to be repaired or rebuilt? It could run into hundreds of dollars. Or, it could be covered in black and white in our Homeowners Policy, so we would pay those extra living expenses! Give us a call. We'll put your home insurance all together in one policy for convenience and saving's sake.

it's better
altogether

A. D. MAYER AGENCY, INC.
115 PARK ST., CHELSEA
BOB BARLOW, AGENT
PHONE 475-2030

Auto-Owners Insurance
Lifetime Car Business



THE Chelsea Standard
PUBLISHERS and PRINTERS

NOTICE DEXTER TOWNSHIP PROPERTY OWNERS

In an effort to make the services of Dexter Township more responsive to the needs of its residents, a special evening meeting of the Board of Review will be held Monday, March 24, 1975 at the Township Hall between the hours of 7 p.m. and 9 p.m.

1975 tax rolls will be available for inspection and the Board of Review will hear petitions from Dexter Township property owners.

DEXTER TOWNSHIP
JOHN M. TANDY, SUPERVISOR

BOWLING NEWS

DID YOU KNOW?



GROVER CLEVELAND

OUR 22nd and 24th PRESIDENT, SERVED ALSO AS GOVERNOR OF NEW YORK AND MAYOR OF BUFFALO. DURING THE CIVIL WAR, HIS CAREER IN LAW WAS BLOSSOMING, SO HE PAID A MAN TO SUBSTITUTE FOR HIM IN THE ARMY. A PRACTICE ALLOWED BY THE CONSCRIPTION ACT OF '63.

THERE ARE OVER 400 KINDS OF CHEESE

CHEESE IS SAID TO BE ONE OF THE 7 BASIC FOODS. CHEESE-MAKING BEGAN 4,000 YEARS AGO.

ALL PURE-BRED SABLES ARE FOUND ONLY IN THE SOVIET UNION.

RUSSIANS HAVE A MONOPOLY ON THESE GLORIFIED WEASELS, NONE OF WHICH ARE IN WESTERN ZOOS. A FULL-LENGTH SABLE COAT COSTS ABOUT \$20,000.

190; L. Alexander, 151; D. Alben, 150, 189, 158; L. Behnke, 162; I. Fouty, 157, 214; S. Zink, 153; J. Cronkite, 157; B. Fritz, 187, 156, 192; P. Fitzsimmons, 174; P. Poertner, 187, 154; L. Stuewe, 209, 154; R. Whitaker, 153; M. Kozminski, 158; A. Dowhal, 178; M. Powell, 150, 180, 173; C. Powell, 165; P. Norris, 197; E. Whitaker, 163; G. Klink, 166, 155; B. Bush, 177; A. Fahrner, 154, 167; N. Packard, 162, 154; R. Hummel, 173, 168, 178; P. Wurster, 152; N. Kern, 157, 177, 169; S. Klink, 178; N. Popovich, 194; L. Orlovski, 177, 184; D. Fouty, 177, 174; D. Verwey, 178; G. Wierman, 152; C. Bradbury, 163; B. Bridges, 152; A. Steinaway, 183; E. Kuhl, 156; B. Fike, 173; S. McCalla, 154, 156; M. Jacobinski, 151; K. McCalla, 155.

Junior Swingers

Standings as of March 8

The Pros 81 27
The Rods III 81 27
The Hot Tamales 73 35
The Pin Swipers 68 41 1/2
The Buzz 63 45
Born Losers 47 57
Pin Smokers 52 55 1/2
Lima Center 5 61 61
Y.B.A. Scorers 36 64
Hot Shots 35 73
Star Strikers 28 68
Chelsea All Stars 22 78

Leisure Time League

Standings as of March 6

Unpredictables 67 38 1/2
Slowpokes 65 38 1/2
Crackpots 61 43
Misfits 57 48 1/2
Lady Bugs 54 49 1/2
Four Stages 50 50
Roadrunners 49 55
Pook Bears 49 55
Highly Hopefuls 48 56
The Lakers 47 57
Sugar Loafers 34 70
Rug Rats 31 72 1/2

Girls, series over 120: C. Minix, 154, 122; S. Schulze, 161, 165, 132; M. Fahrner, 124; C. Collins, 133, 124, 215; K. Tobin, 173, 148, 129; D. Packard, 121, 133; K. Milliken, 137, 148; T. Goins, 124; S. Fahrner, 129, 137; R. Alexander, 128; B. Lovely, 123, 151; K. Keiser, 121, 130; K. Fairbanks, 142; D. Alexander, 160, 126, 131.

Junior House League

Standings as of March 6

Mark IV Lounge 120 62
Chelsea Lanes 119 63
Frank Grohs Chevy 114 68
Mac Tools 105 77
Wolverine No. II 102 80
Dana's AAA 83 89
Dana Maintenance 83 89
Trading Post 81 91
Jiffy Mix 80 92
Washtenaw Engineer 89 93
Boyer Automotive 87 95
Del's Paints 87 95
3-D Sales & Service 79 102 1/2
Rockwell International 79 102 1/2
Doug's Painting 77 105
Slocum Const. & Build. 78 124
IPSCO 87 125

600 series: A. Fletcher, 645; D. Elseise, 162; J. Stock, 160, 150; D. Bowen, 160; D. Rowe, 156; S. Rademacher, 153; C. Tobin, 150; R. Schulze, 147; B. McAllister, 140; D. Stock, 140.

140 games: S. Weston, 176; E. Swanson, 148; J. Dodlin, 154; E. Williams, 140, 148, 155; G. Reed, 173; J. Anderson, 150, 140; J. Delagrange, 142; Shirley Friday, 185, 152, 176; P. Whitesall, 162; G. Tallman, 147; S. Nagel, 143, 145; S. Centilli, 146, 148, 178; L. Haller, 169, 153; M. Dault, 155, 198, 141; D. Dault, 172, 177; P. Wirth, 146; M. O'Donnell, 148, 149; M. Miller, 145, 167; D. Thompson, 146; Sharon Friday, 146, 168; K. Haywood, 153, 150, 164; V. Wheaton, 157, 158; D. Hafner, 176, 148; B. Mull, 143, 173; S. Thurkow, 152; B. Cekaia, 146; A. Wahl, 154; R. Musbach, 143; B. Robinson, 170.

Boys, games 100 and over: D. Marsh, 145; D. Dorer, 142; M. Alexander, 126, 112; M. Northrop, 120; C. Feeney, 118, 100; M. Petsch, 106, 105; D. Alexander, 104.

Charlie Brown & Snoopy's Friends Prep Division

Standings as of March 8

Striking Strikers 40 14
Pin Fighters 35 19
Super Stars 34 20
Buildings 34 20
Thompson's Submarines 27 27
Super Strikers 26 28
Streakers 24 30
Bobbing Pins 21 32 1/2
Pin Pushers 15 37
Chelsea Killers 13 41

Girls, games 100 and over: D. Marsh, 145; D. Dorer, 142; M. Alexander, 126, 112; M. Northrop, 120; C. Feeney, 118, 100; M. Petsch, 106, 105; D. Alexander, 104.

Boys, games 140 and over: J. Fouty, 181; B. Freeman, 168; D.

Hi Point Mixed

Standings as of March 4

New Breed 521
Heavy Traffic 515
Dexter Gear & Spline 502
Flat Tires 482
Hit & Missers 481
River Rats 481
Alley Runners 468
Trouble Shooters 463
Ding A Lings 450
Pres. 428
4 D's 423
Faber Fabrics 406

Charlie Brown's Peanut League

Standings as of March 8

Super Strikers 35 19
Pin Crackers 30 23 1/2
Super Stars 28 26
Snoopies 26 27 1/2
All Stars 21 33
Wild Cats 21 33

CHELSEA FINANCE CORP.

\$25 to \$1,500 For Any Worthwhile Purpose

See or Call FRANK HILL at 475-8631

111 PARK STREET CHELSEA, MICH.

MARK IV LOUNGE

PHONE 475-8141 CHELSEA

TRY OUR INFLATION BUSTING BOWLING RATES From 11:30 p.m. Until Closing Monday thru Friday

BOWLING BALLS, BAGS, SHOES NOW IN STOCK. CHELSEA LANES, Inc. 1189 M-52 CHELSEA PHONE 475-8141

Rolling Pin League

Standings as of March 11

Egg Beaters 74 26
Coffee Cups 67 33
Mopper Uppers 59 41
Spoons 54 46
Mixers 52 47 1/2
Brooms 51 49
Blenders 49 50 1/2
Sugar Bowls 49 50 1/2
Pots 48 52
Kitchen Kapers 47 53
Dish Rags 43 57
Grinders 42 58
Kookie Cutters 41 58 1/2
Beaters 41 59
Boachers 41 59
Jolly Mops 40 60

Chelsea Suburban

Standings as of March 5

Chelsea Drug 103 72
Dana Corp. 97 78
Foor Mobil 95 80
Dancer's 95 80
Dairy Queen 93 82
Frisinger Realty 88 87
State Farm 87 88
Chelsea State Bank 84 91
Cavanaugh Lake Store 82 93
Chelsea Assoc. Builders 78 97
Mark IV Lounge 76 99
Waterloo Garage 72 108

Chelsea Women's Bowling Club

Standings as of March 5

Jiffy Mixes 68 32
Wolverine Bar 68 32
Palmer Field 59 40 1/2
Parish's Cleaners 56 44
Washtenaw Engineering 56 44
Norris Electric 53 47
Mark IV Lounge 52 47 1/2
Thompson's Pizza 52 47 1/2
Chelsea Milling 52 48
Norm's Barber Shop 50 49 1/2
Rushing's Temporary Help 47 52 1/2
Chelsea Grinding 46 53 1/2
Larry's Roadside Market 46 53 1/2
Lloyd Bridges Chevrolet 42 58
Joe & Judy's 42 58
Heydlauff's 41 59
Glenn's Mobil 40 60

Chelsea Women's Bowling Club

Standings as of March 5

425 series and over: L. Jarvis, 511; B. Hafley, 528; N. Collins, 547; P. Elliott, 507; R. McGibney, 519; N. Packard, 454; D. Keezer, 451; C. Stoffer, 470; S. Bowen, 469; P. Harook, 450; B. Beeman, 444; L. Beeman, 441; M. Inbody, 463; D. Kinsey, 491; G. DeSmith, 493; B. Fike, 438; B. McGibney, 476; R. West, 445; T. Monroe, 459; S. Hafner, 494; D. McAllister, 467; M. Usher, 445; G. Baczynski, 475; B. Smith, 460; N. Prater, 501; B. Robeson, 461; R. Cole, 460; K. Snyder, 469; J. Kipmiller, 476; V. Harvey, 457; A. Hocking, 482; D. Keezer, 469; M. De La Torre, 489.

Chelsea Women's Bowling Club

Standings as of March 5

150 games and over: L. Hafner, 151, 161; J. Norris, 158; D. Eisenman, 175; M. Eder, 152; S. Ringe, 173; E. Policht, 150, 179; R. Lutovsky, 156; J. Schleede, 163, 185; D. Eisenbeiser, 158; M. E. Sutter, 185.

Chelsea Nite Owl League

Standings as of March 10

Southern Boy 69 38 1/2
McCalla Mobile Feeds 66 42
Steele's Heating & Cooling 63 45
Cavanaugh Lake Store 62 45 1/2
Dault & LeVan 61 47
Fitzsimmons Excavating 59 49
Norm's Body Shop 56 52
Chelsea Finance 56 52
Hanco Sports Center 51 56 1/2
Bollinger's Sanitation 51 56 1/2
Wahl's Oil 50 57 1/2
Sherlock Homes 49 58 1/2
Red's Standard 48 60
Ted's Standard 48 60
Lopez Builders 45 63
Team No. 2 28 80

Tri-City Mixed League

Standings as of March 7

Craft Appliance Co. 123 68
Jiffy Mixes 117 72
Real Estate One 103 81
Stiver's 108 81
Jerry & Doug's Quality 103 86
E. P. Smith Pallet Co. 103 86
Chelsea Cleaners 99 90
Portage Hardware 99 90
Mel's Roofing 99 90
Sprague Buick & Olds 94 95
McEwan & Robinson 94 95
R. L. Bauer Builders 91 98
8-D Sales & Service 84 105
Hoover's Hustlers 82 107
Euler & Swersky 79 110
Take Seven 78 111
4-B's 72 117
Chelsea Glass Works 68 121

Chelsea Women's Bowling Club

Standings as of March 5

500 series, men: J. Baker, 587; E. Baku, 533; F. Cooper, 519; G. Craft, 508; A. Fouty, 543; B. Kaiser, 530; J. Lyerla, 541; C. Robinson, 531; A. Sannes, 539; J. Stoffer, 528; H. Swersky, 530; D. Westcott, 526; R. V. Worden, 561.

Chelsea Women's Bowling Club

Standings as of March 5

150 games, women: V. Allen, 184; C. Baker, 158; L. Behnke, 159; G. Cooper, 151; G. Detting, 156, 159, 171; D. Euler, 158; M. Fike, 151, 188; K. Fletcher, 155; D. Fouty, 172, 160; A. Hocking, 145, 166, 167; K. Lentz, 157; M. Maier, 156; B. Parish, 157, 136; C. Stoffer, 169; J. Sweeney, 140; D. Swersky, 166, 155; N. Thompson, 154, 185; E. Tindall, 159, 189; D. Watkins, 152; M. Westcott, 156, 185; M. Weston, 161.

Chelsea Women's Bowling Club

Standings as of March 5

450 series or over: B. Fritz, 535; R. Hummel, 519; I. Fouty, 518; M. Powell, 503; N. Kern, 503; E. Policht, 464; J. Schleede, 494; M.E. Sutter, 480; D. Alber, 497; P. Fitzsimmons, 464; P. Poertner, 478; L. Stuewe, 496; P. Norris, 477; G. Klink, 454; N. Popovich, 474; L. Orlovski, 482; D. Fouty, 478; D. Verwey, 457; A. Steinaway, 450; B. Fike, 450.

150 games and over: L. Hafner, 151, 161; J. Norris, 158; D. Eisenman, 175; M. Eder, 152; S. Ringe, 173; E. Policht, 150, 179; R. Lutovsky, 156; J. Schleede, 163, 185; D. Eisenbeiser, 158; M. E. Sutter, 185.

Boys, games 140 and over: J. Fouty, 181; B. Freeman, 168; D.

Boys, games 140 and over: J. Fouty, 181; B. Freeman, 168; D.

Boys, games 140 and over: J. Fouty, 181; B. Freeman, 168; D.

Boys, games 140 and over: J. Fouty, 181; B. Freeman, 168; D.

Boys, games 140 and over: J. Fouty, 181; B. Freeman, 168; D.

Boys, games 140 and over: J. Fouty, 181; B. Freeman, 168; D.

Boys, games 140 and over: J. Fouty, 181; B. Freeman, 168; D.

Boys, games 140 and over: J. Fouty, 181; B. Freeman, 168; D.

Boys, games 140 and over: J. Fouty, 181; B. Freeman, 168; D.

Boys, games 140 and over: J. Fouty, 181; B. Freeman, 168; D.

Boys, games 140 and over: J. Fouty, 181; B. Freeman, 168; D.

Boys, games 140 and over: J. Fouty, 181; B. Freeman, 168; D.

Weatherwax, 621; A. Sannes, 614; T. Dittmar, 622; J. Forner, 638.

525 or over series: G. Winchester, 548; L. Salver, 570; J. Toma, 548; J. Eder, 527; N. Fahrner, 527; G. White, 539; G. Beeman, 598; S. Gaspar, 540; T. Karns, 582; L. Hughes, 533; D. Buku, 547; T. Steele, 538; L. Hocking, 526; R. V. Worden, 591; B. Smith, 531; K. Larson, 564; R. Prater, 537; D. Crosby, 577; O. Cavender, 539; J. Lyerla, 545; M. Mock, 541; W. Kruse, 532; G. McAtee, 548; M. Manville, 543; T. Kruse, 532; D. Clark, 530; D. Adams, 544; K. Norris, 564; H. Pennington, 530; M. Ford, 528; J. McAllister, 544.

Chelsea Lanes Mixed

Standings as of March 7

Mark IV Lounge 118 70
Bushwackers 115 74
Gerry Rushing's Service 112 77
Bollingers 106 83
Torric & Rawson 106 83
Adamson & Henson 103 86
Doug's Painting 102 87
Ann Arbor Centerless 98 92
Marsh & Verwey 94 95
The Hopeluls 93 96
Hook, Line & Stinkers 92 97
Federal Screw-Outlaws 101 98
Sak's Fifth Avenue 84 105
The Rhinheads 80 109
Bable & Silcox 78 111
Mort's Custom Shop 78 116
Willy & The We's 61 128

Chelsea Industrial Suburban

Standings as of March 6

Thompson Lounge 18 10
Ann Arbor Hyd. 18 10
Double A No. 99 17 11
Harvey's Tavern 13 15
The Other Team 13 15
Mark IV Lounge 13 16
Double A No. 2 12 16
Dana ITO's 8 20

Chelsea Industrial Suburban

Standings as of March 6

Thompson Lounge 18 10
Ann Arbor Hyd. 18 10
Double A No. 99 17 11
Harvey's Tavern 13 15
The Other Team 13 15
Mark IV Lounge 13 16
Double A No. 2 12 16
Dana ITO's 8 20

Chelsea Industrial Suburban

Standings as of March 6

Thompson Lounge 18 10
Ann Arbor Hyd. 18 10
Double A No. 99 17 11
Harvey's Tavern 13 15
The Other Team 13 15
Mark IV Lounge 13 16
Double A No. 2 12 16
Dana ITO's 8 20

Chelsea Industrial Suburban

Standings as of March 6

Thompson Lounge 18 10
Ann Arbor Hyd. 18 10
Double A No. 99 17 11
Harvey's Tavern 13 15
The Other Team 13 15
Mark IV Lounge 13 16
Double A No. 2 12 16
Dana ITO's 8 20

Chelsea Industrial Suburban

Standings as of March 6

Thompson Lounge 18 10
Ann Arbor Hyd. 18 10
Double A No. 99 17 11
Harvey's Tavern 13 15
The Other Team 13 15
Mark IV Lounge 13 16
Double A No. 2 12 16
Dana ITO's 8 20

Chelsea Industrial Suburban

Standings as of March 6

Thompson Lounge 18 10
Ann Arbor Hyd. 18 10
Double A No. 99 17 11
Harvey's Tavern 13 15
The Other Team 13 15
Mark IV Lounge 13 16
Double A No. 2 12 16
Dana ITO's 8 20

Chelsea Industrial Suburban

Standings as of March 6

Thompson Lounge 18 10
Ann Arbor Hyd. 18 10
Double A No. 99 17 11
Harvey's Tavern 13 15
The Other Team 13 15
Mark IV Lounge 13 16
Double A No. 2 12 16
Dana ITO's 8 20

The Chelsea Standard, Thursday, March 13, 1975 11

Senior House League

Standings as of March 10

S. J. Custom Leather 124 65
Washtenaw Crop Serv. 115 74
Frank Grohs Chev. 114 75
Chelsea Grinding 104 84 1/2
Sylvan Center 102 87
Mark IV Lounge 100 89
Seitz's Tavern 100 89
Gambles 98 91
Sarns Inc. 97 92
Chelsea Lumber 96 93
Schneider's Grocery 94 94 1/2
Foor's Mobil 94 94 1/2
Dexter Automatics 92 97
Lloyd Bridges Chev. 87 101 1/2
Bauer Builders 82 107
Village Motor Sales 76 113
Walt's Barber Shop 62 127
Ben's Arco 62 127
600 series: P. Maurer, 647; J. Lyerla, 607.

Chelsea Lanes Mixed

Standings as of March 7

Mark IV Lounge 118 70
Bushwackers 115 74
Gerry Rushing's Service 112 77
Bollingers 106 83
Torric & Rawson 106 83
Adamson & Henson 103 86
Doug's Painting 102 87
Ann Arbor Centerless 98 92
Marsh & Verwey 94 95
The Hopeluls 93 96
Hook, Line & Stinkers 92 97
Federal Screw-Outlaws 101 98
Sak's Fifth Avenue 84 105
The Rhinheads 80 109
Bable & Silcox 78 111
Mort's Custom Shop 78 116
Willy & The We's 61 128

Chelsea Industrial Suburban

Standings as of March 6

Thompson Lounge 18 10
Ann Arbor Hyd. 18 10
Double A No. 99 17 11
Harvey's Tavern 13 15
The Other Team 13 15
Mark IV Lounge 13 16
Double A No. 2 12 16
Dana ITO's 8 20

Chelsea Industrial Suburban

Standings as of March 6

Thompson Lounge 18 10
Ann Arbor Hyd. 18 10
Double A No. 99 17 11
Harvey's Tavern 13 15
The Other Team 13 15
Mark IV Lounge 13 16
Double A No. 2 12 16
Dana ITO's 8 20

Chelsea Industrial Suburban

Standings as of March 6

Thompson Lounge 18 10
Ann Arbor Hyd. 18 10
Double A No. 99 17 11
Harvey's Tavern 13 15
The Other Team 13

Daniel Wenk Earns MSU Degree in Landscape Architecture

Receiving a bachelor's degree in Landscape Architecture from Michigan State University last Saturday, was Daniel N. Wenk of 2681 Fletcher Rd.

Wenk was one of 1,463 recipients for degrees awarded at the winter term commencement exercises held in the MSU auditorium.

Also granted a bachelor's degree in Elementary Education was Marylynn Dolezky of 9750 Fleming Rd., Dexter.

The candidates included 975 bachelors, 354 masters, 103 doctoral, 9 educational specialists, 20 doctors of human medicine and two doctors of osteopathic medicine.

U.S. Congressman James O'Hara delivered the commencement address at the 3 p.m. ceremony for undergraduate degrees.

Manchester Township Man Chosen Farm Manager of the Year

Tom W. Carlton, 16429 Vantyle Rd., Clinton, has been selected as one of the Farm Managers of the Year in the Michigan State University Telford record keeping program. The 14 farm managers and their families of the year will be honored at the annual Farm Management Banquet to be held Thursday, March 20 at the Kellogg Center, Michigan State University, East Lansing.

Tom, Patty, his wife, and their three sons, Bruce, Mark and Terry, live on a dairy and crop farm located in Manchester township in the southwestern part of Washtenaw county.

Stan Poet, 10389 Burmeister Rd., Manchester, will be honored by the Michigan State Jaycees at the annual Farm Management Banquet as their Farmer of the Year.

Bad Weather Slows Dimes Fund Sale

Foul weather inhibited potential buyers from latching onto all the goodies featured in Saturday's "three-in-one sale," sponsored by the Chelsea March of Dimes. The sale, composed of three divisions of goods: rummage, baked goods, and craft items, drew in 146.01 all to be contributed toward the Dimes effort.

Mrs. Jeanene Riemenschneider, special events chairman, reported that left over rummage items were donated to St. Barnabas Episcopal church for use in their rummage sale to be held sometime in April.

Mrs. Riemenschneider expressed thanks to the United Methodist Home for their contributions, to Beach Middle school students for posters made to help publicize the effort, and to all those people who donated to the sale.

Special thanks go to co-chairman for the event Bobbie Johnson, and to co-workers Barbara Brown, and Sandy Thirkow.

Cow-Calf Clinic Slated March 25

Washtenaw County Co-operative Extension Service is sponsoring a Cow-Calf Clinic on Tuesday, March 25. The meeting will be held in Room A of the Briarwood Mall auditorium from 7 p.m. to about 10:30 p.m.

Dr. Harlan Ritchie, Michigan State University Beef Specialist will be the featured speaker. He will discuss phases pertinent to the Beef Cow-Calf operation.

AUTO DEATHS
The nation's mileage death rate for the first five months of 1974, projected to an annual rate, held steady at 3.4 traffic deaths per 100 million vehicle miles traveled—the lowest motor traffic death rate in the nation's history.

Gelman Firm Reports Net Loss For Past Quarter

Ann Arbor—Gelman Instrument Co. announced operating results for the second quarter ended Jan. 31, 1975.

Sales for the quarter were \$2,722,300 compared to \$2,643,900 for the comparable period last year. The company reported a net loss of \$84,100 or six cents per share as compared to net earnings of \$35,700 or four cents per share in the prior year. Included in the results were a charge of \$10,100 for the current quarter and \$24,800 or two cents per share for the comparable period last year resulting from an adjustment in the utilization of income-tax loss carryforwards.

Sales for the first six months were \$5,106,600 as compared to \$4,811,000 last year. The company reported a net loss of \$279,400 or 20 cents per share as compared to net earnings of \$315,300 or 23 cents per share for the same period last year. The six months results for the prior year include a credit of \$102,300 or seven cents per share resulting from utilization of income-tax loss carryforwards. Computations are based on 1,367,228 shares as compared to 1,365,574 shares last year.

Studded Snow Tires Outlawed After March 31

March 31 is the last day ever that existing studded snow tires may be used on Michigan roads, according to Automobile Club of Michigan.

Public Act 138, passed in 1973, bans metal tire studs of the type now in use in Michigan on and after April 1, 1975. Auto Club Touring Manager Joseph Ratke points out.

"However, if the studs are removed, the snow tires may be used on highways after this winter," Ratke added. He noted that persons with a pair of pliers and a strong wrist can remove the studs, or most tire dealers will do the job for \$3 to \$5 per tire.

The Michigan Department of Highways and Transportation is now empowered to establish rules regulating the use of highway traction devices after this winter. Auto Club points out that if studs are developed which will reduce road surface damage to 25 percent of that now caused by tungsten carbide studs, the Highway Department could approve their use.

Telephone Area Code Changed in Adrian Vicinity

The transfer of Adrian and 12 neighboring communities in Lenawee county from the "313" to the "517" telephone area code will take place Saturday, March 15.

Harry M. Kenworthy, Michigan Bell's local manager, said that after 2 p.m. that day local telephone customers will need to dial "517" when calling the Adrian area.

No local or long distance rates will be affected by the change except for WATS (Wide Area Telephone Service) rates, Kenworthy said. Those few customers with WATS already have been notified of the change, he added.

The communities that will become part of the "517" area are: Adrian, Blissfield, Britton, Clayton, Clinton, Deerfield, Hudson, Morenci, Ogden Center, Onsted, Sand Creek, Tecumseh and Tipton. Another town, North Fayette, will be shifted from the "313" to the "517" area in October.

The area code transfer, designed to alleviate overcrowding in the "313" area, was approved by the state Public Service Commission in January, he said.

During the next year, incorrectly dialed calls will be intercepted with a recorded message to remind callers of the area code change, Kenworthy said.

★ District Court Proceedings ★

Week of March 4-10

Michael D. Reed pled guilty to speeding and was fined \$41.

Alice More pled guilty to speeding and was fined \$21.

Ricky V. Smith pled guilty to charges of driving under the influence of liquor, and impaired driving. Sentencing has been set for March 8.

James R. Hall was found guilty on charges of drunk and disorderly and was fined \$50.

Johnny Roberts was found guilty of driving with a suspended license and was fined \$75. On the charge of driving under the influence, he was also found guilty, and charged \$200 and placed on two years probation.

Stephen Salwzyuk pled guilty to speeding and was fined \$23.

Wallace Yannott pled guilty to possessing open intoxicants in a motor vehicle and was fined \$35.

Ewan Isaac pled guilty to the possession of open intoxicants in a motor vehicle and was fined \$35.

Lillian Weber pled guilty to speeding and was fined \$21.

George Catton, III, changed his plea to no contest for the charge of malicious phone calls, and was fined \$100, plus six months probation.

Howard J. Denio was sentenced to driving under the influence of liquor, and was fined \$350, two years on probation, the first 15 days to be spent in jail, plus an order to attend the Alcohol Safety Action Program.

Merle Barr, Jr., pled guilty to reckless driving and was sentenced to \$100 or 10 days in jail.

Warren Parson was fined \$75, for reckless driving.

Daniel Rosentreter pled guilty to concealing alcohol in a motor vehicle and was fined \$35.

Richard Dixon pled guilty to speeding and was fined \$90, and six months probation, plus ordered to attend drivers education school.

Jose Arona pled guilty to charges of failing to stop and was fined \$16.

Julie Harper pled guilty to passing a school bus with descending passengers and was fined \$75.

Kathy Dornberger pled guilty to faulty equipment and was fined \$16.

Richard Simmons pled guilty to speeding and was fined \$25.

William Dechert was found guilty to charges of assault and battery and fined \$25.

Robert Ratt was sentenced \$200 and one year probation plus attendance at the Alcohol Safety Action Program for the drunk and disorderly.

Jobyanna Sherman pled guilty to speeding and was fined \$21.

Daniel Barrow pled guilty to speeding and was fined \$23.

William Hart pled guilty to speeding and was fined \$21.

John Lake was found guilty of leaving the scene of a property damage accident and was fined \$25, plus \$46 for restoration.

William M. Hagen pled guilty to speeding and was fined \$31.

James Mulvene changed his plea to guilty for charges of a suspended license, and was fined \$75 and 3 days, or 20 days.

Samuel Short pled guilty to running a stop sign and was fined \$16. He also pled guilty to driving with an expired license and was fined \$18.

Susan Gillespie pled guilty to speeding and was fined \$21.

Richard Fredette was found guilty of impaired driving and sentenced \$200, and ordered to participate in the Alcohol Safety Action Program for the drunk and disorderly.

Robert Evans pled guilty to violating the basic speed law and was fined \$21.

Kim Wilderson pled guilty to

open alcohol on a public highway and was fined \$35.

Sandra Cadotte was found guilty of careless driving and was fined \$30.

Harold Johnson was sentenced to \$250, or 45 days for driving while under the influence of liquor.

Cory Murray was sentenced for impaired driving and fined \$250, plus six months probation.

Lyle Roeder pled guilty to speeding and was fined \$21.

Charles Bowers pled guilty to the possession of open intoxicants in a motor vehicle and was fined \$35.

Michigan dairy farmers are getting help with pollution problems from agricultural economists at Michigan State University who have developed a complete set of costs for various pollution control measures. The figures help farmers determine costs involved in complying with current and potential pollution laws, and allows them to select the most economic solution to the problem.

Coyote Bounty Repeal Sought in Proposed Bill

Senator Gilbert E. Bursley (R-Ann Arbor) introduced Senate Bill 398 in the Michigan State Senate yesterday, which would repeal the bounty on coyotes. The bill was co-sponsored by Senator Kenneth Kammer of Pontiac.

"This measure which I have sponsored for several years should have passed long ago," said Senator Bursley, "except for the special interest pressure groups who are profiting from these bounties."

"I would hope that the measure can be considered dispassionately and at least vote the bill to the floor of the Senate so my colleagues can go on record on the matter."

"In a recession year when every dollar counts, \$15,000 for these bounties could mean a great deal to programs involving needy human beings."

Telephone Your Club News To 475-1371.

KEN YOUNG CONSTRUCTION

PHONE 426-3342 or 826-3887 (after 6 p.m.)

Home Builder - Remodeling - Carpenter Contractor - Brick Work - Fireplaces Aluminum Siding - Block & Brick Work Painting - Decorating - Trucking & Excavating

FOR SALE—3 scenic 10-acre parcels. Two with lake frontage on private lake.

FREE ESTIMATES WITH GUARANTEE ON ALL OUR WORK.

PHONE KEN YOUNG after 6 p.m. 668-7420 or 826-3887

ST. PATRICK'S DAY SPECIAL

Monday, March 17, 11 a.m. to 9 p.m.

CORNERED BEEF

and

CABBAGE DINNER

includes boiled potatoes, carrots, roll and butter

only \$2.25

at -

THE CAPTAINS TABLE

8093 Main St. - Dexter
426 - 3811

Monday-Wednesday 6 a.m. - 9 p.m.
Thursday & Friday 6 a.m. - 10 p.m.
Saturday 7 a.m. - 9 p.m.

FOOD FOR THINKING CHRISTIANS:

The Divine Plan of the Ages

"The Bible was written by men!"

This has become the cry of modern religionists who wish to discredit the only Authority to which a Christian can go for his knowledge—the Bible. No one denies that the Holy Word was written by men. But it was written by men who were moved to write by the Holy Spirit of God. (2 Peter 1:21) And these men or prophets clearly stated that they did not even understand what they were writing! (1 Peter 1:10-12; Daniel 12:8, 9)

The strength of the Bible's testimony is that, while it was written by men—many men over many hundreds of years, through many changes of government, society, economics and customs—yet it is still a harmonious work. It does not contradict itself.

Its writers are portrayed in all their weaknesses and imperfections—not in their glorious strengths. How many men write about themselves in complimentary terms? Its dates and places are so uncannily accurate that archeologists use the Bible as

their guide book and map as they go to uncover past civilizations. Its prophecies are so outstanding that it is today predicting what will happen next! It is The Book of All Books. Judge it by its internal evidence, and you will be certain that this Book, written by the hands and pens of selected men, is indeed the word, spirit, and promise of God!

If you want to study this subject thoroughly and quickly for yourself, read chapter 3 in The Divine Plan of the Ages. Chapter 3 is entitled, "The Bible as a Divine Revelation Viewed in the Light of Reason." You will know your Bible better as a result of this study.

Many of you recently received a copy of The Divine Plan of the Ages by mail. If you did not receive a copy or would like an additional copy, please send for one. It is free to you by writing:

Divine Plan
P. O. Box 5
Chelsea, Michigan 48118



PARENTS:

Compare Prices & Save!

BAND INSTRUMENTS

NEW — USED — RENTAL

The Music Hutch would like to inform you of the Band Instrument program that is available to you only 8 miles from Chelsea. We deal in brand name instruments, which are available at reasonable prices, with one year's free service on any new instrument purchased here.

Instruments may be rented from the Music Hutch, with all rental payments applied to the purchase price of the instrument, if you should decide to buy it at a later date.

Repair service, with all repair work guaranteed, is available at the Music Hutch, with service being one of the important considerations in dealing locally. When necessary, an instrument owned by the store will be provided for the student's use until his own instrument is repaired.

The Music Hutch also handles band accessories, such as reeds, lyres, music stands, lubricants, mouthpieces, method books, etc.

CALL SOON FOR FURTHER INFORMATION

FREE

EXPERT SERVICE FOR 1 YEAR
ON NEW INSTRUMENTS PURCHASED AT

THE MUSIC HUTCH

MAIN ST. - DEXTER - NEXT TO BANK
426-4380



Polly's

MASTER
MARKETS

1101 M52
CHELSEA

201 PARK
VANDERCOOK LK.

1621
Spring Arbor Rd.
JACKSON

960
N. WEST AVE.
JACKSON

115
W. PROSPECT ST.
JACKSON

1809
E. MICH. AVE.
JACKSON

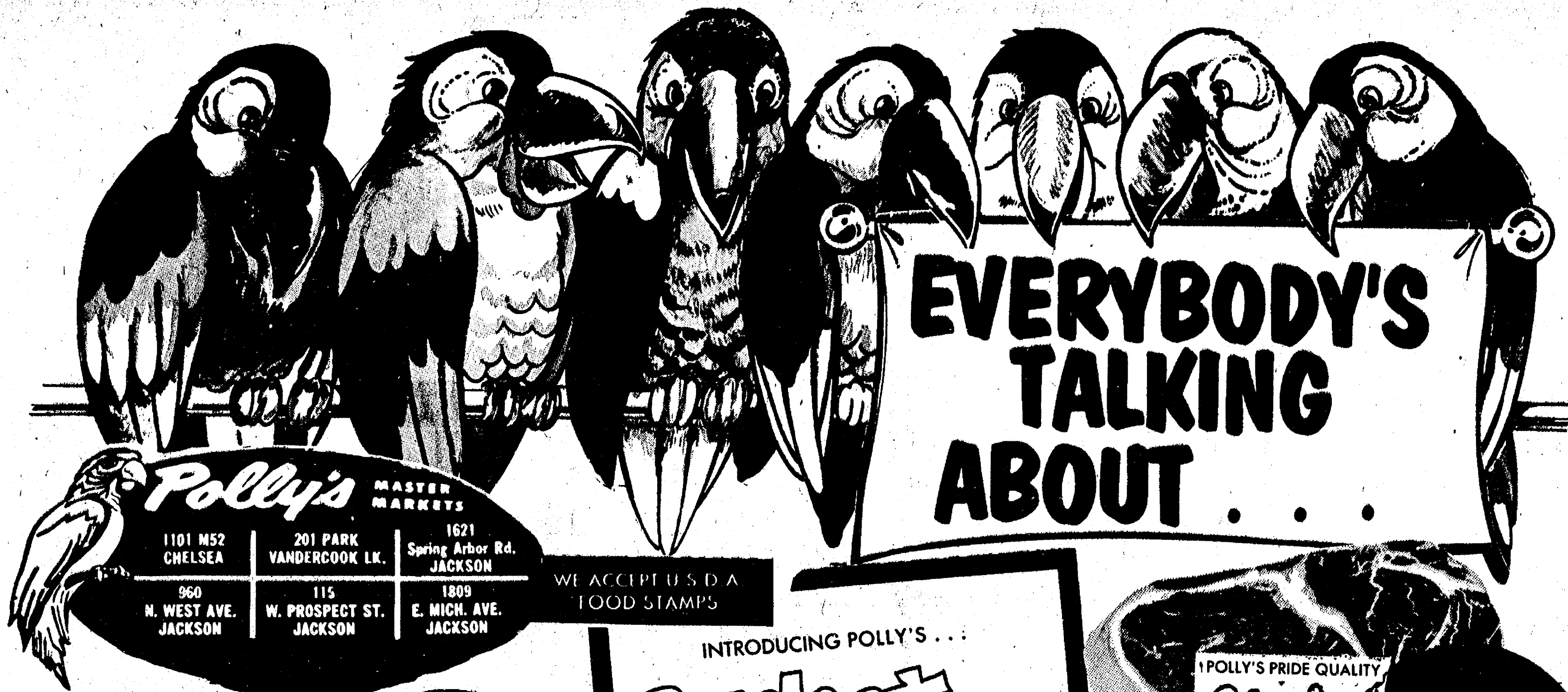
get to know us...

WE CAN HELP YOU SAVE ON YOUR FOOD BILL!

OPEN . 8 A.M. TO 10 P.M.
DAILY:

OPEN 9 A.M. TO 6 P.M.
SUNDAY:

- ★ **QUALITY PRODUCE**
- ★ **QUALITY MEAT**
- ★ **COLD BEER & WINE**
- ★ **LOTTERY TICKETS**
- ★ **SIDES OF BEEF**
- ★ **FRUIT BASKETS**
- ★ **DRY CLEANING**
- ★ **PHOTO PROCESSING**
- ★ **VARIETY AT LOW PRICES**



POLLY'S PRIDE QUALITY

Round STEAK

\$1.09
LB.

POLLY'S PRIDE CUBE STEAK LB. **\$1.49**

INTRODUCING POLLY'S...
Budget Beef!

STEAK SALE

BUDGET BEEF SIRLOIN STEAK LB. **\$1.07**
BUDGET BEEF T-BONE STEAK LB. **\$1.17**
BUDGET BEEF PORTERHOUSE LB. **\$1.27**
BUDGET BEEF ROUND STEAK LB. **97¢**
BUDGET BEEF CUBE STEAK LB. **\$1.17**

POLLY'S PRIDE QUALITY
Sirloin STEAK

\$1.29
LB.

POLLY'S PRIDE PORTERHOUSE STEAK LB. **\$1.59**

POLLY'S PRIDE QUALITY

T-Bone STEAK

\$1.49
LB.

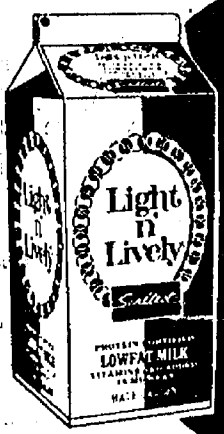
POLLY'S PRIDE QUALITY

Chuck STEAK

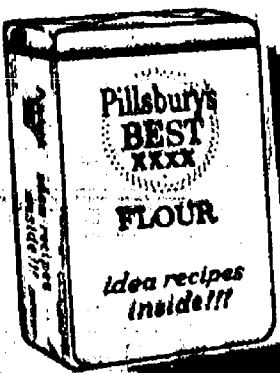
59¢
LB.



SAVE 80¢
W/IN-STORE COUPON
& \$5.00 PURCHASE
6-PACK RETURNABLE COKE
32-OZ. **\$1.79**



SAVE 52¢
W/IN-STORE COUPON
& \$5.00 PURCHASE
LIGHT N' LIVELY MILK
1/2-GAL. **2 98¢**
for



SAVE 19¢
W/IN-STORE COUPON
& \$5.00 PURCHASE
PILLSBURY FLOUR
5-LB. **69¢**



SAVE 40¢
W/IN-STORE COUPON
& \$5.00 PURCHASE
POLLY'S KING BREAD
24-OZ. **3 for \$1.09**



SAVE 55¢
W/IN-STORE COUPON
& \$5.00 PURCHASE
CHASE & SANBORN COFFEE
2-LB. **\$1.59**

SAVE UP TO \$14.43

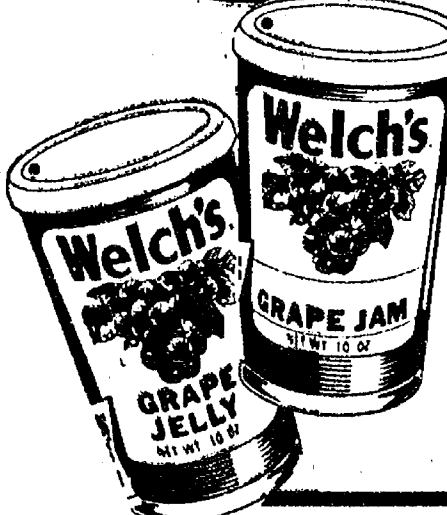
WITH IN-STORE COUPONS,
PLUS COUPONS IN THIS AD



SAVE UP TO 20¢
W/IN-STORE COUPON
POLLY'S A

MEDIUM EGGS

49¢
DOZEN



SAVE 16¢
W/IN-STORE COUPON
WELCH'S GRAPE JAM or JELLY
2-LB. **99¢**

BUY 3 SAVE 40¢	POLLY'S KING SIZE BREAD..... 3 24-OZ. LIVES.	\$1.09
BUY 1 SAVE 19¢	PILLSBURY FLOUR..... 5-LB.	69¢
BUY 1 SAVE 30¢	PILLS. HUNGRY JACK POTATOES..... 32-OZ.	\$1.19
BUY 1 SAVE 20¢	STAIN REMOVING MIRACLE WHITE..... 16-OZ.	77¢
BUY 1 SAVE 29¢	COCONUT NU-SOFT..... 33-OZ.	59¢
BUY 1 SAVE 50¢	TONY'S PIZZAS 31 1/2-OZ. SAUSAGE PEPPERONI 29-OZ.	\$2.19
BUY 1 SAVE 14¢	SOFT PROMISE MARGARINE..... 16-OZ.	71¢
BUY 1 SAVE 55¢	CHASE & SANBORN COFFEE..... 2-LB.	\$1.59
BUY 2 SAVE 52¢	LIGHT & LIVELY MILK..... 2 1/2-GAL.	98¢
BUY 1 SAVE 14¢	CRISCO OIL..... 38-OZ.	\$1.59
BUY 1 SAVE 80¢	6-PACK RET. COKE..... 32-OZ.	\$1.79
	6-PACK RET. TAB..... 32-OZ.	\$1.69
BUY 1 SAVE 10¢	SWEETHEART LIME DISH SOAP..... 32-OZ.	69¢
BUY 2 SAVE 20¢	POLLY'S A MEDIUM EGGS..... DOZ.	49¢
BUY 1 SAVE \$10.00	ON ANY SIDE OF BEEF	\$10.00 OFF
BUY 1 SAVE 15¢	ON ANY 1-LB. PKG. BACON.....	15¢ OFF

SAVE 42¢ JOHNSON DAYTIME DISPOSABLE DIAPERS..... 24-CT. **\$1.89**

SAVE 20¢ SCOT LAD STRAWBERRY PRESERVES..... 3-LB. **\$1.89**

SAVE 20¢ NABISCO OREO COOKIES..... 15-OZ. **79¢**

SAVE 20¢ CHOCOLATE NESTLES QUIK..... 2-LB. **\$1.99**

SAVE 16¢ LIQUID ERA DETERGENT..... 32-OZ. **99¢**



SAVE 29¢
W/IN-STORE COUPON
COCONUT NU-SOFT FABRIC SOFTENER
33-OZ. **59¢**

SAVE 24¢ FISHER DELIGHT CHEESE LOAF..... 2-LB. **99¢**

SAVE 8¢ VETS DOG FOOD..... 6 16-OZ. CANS **\$1**

WISHBONE ASSORTED LO-CAL DRESSINGS... 3 8-OZ. **99¢**

QUEEN OF SCOT TOMATO SOUP..... 6 10 1/2-OZ. CANS **\$1**

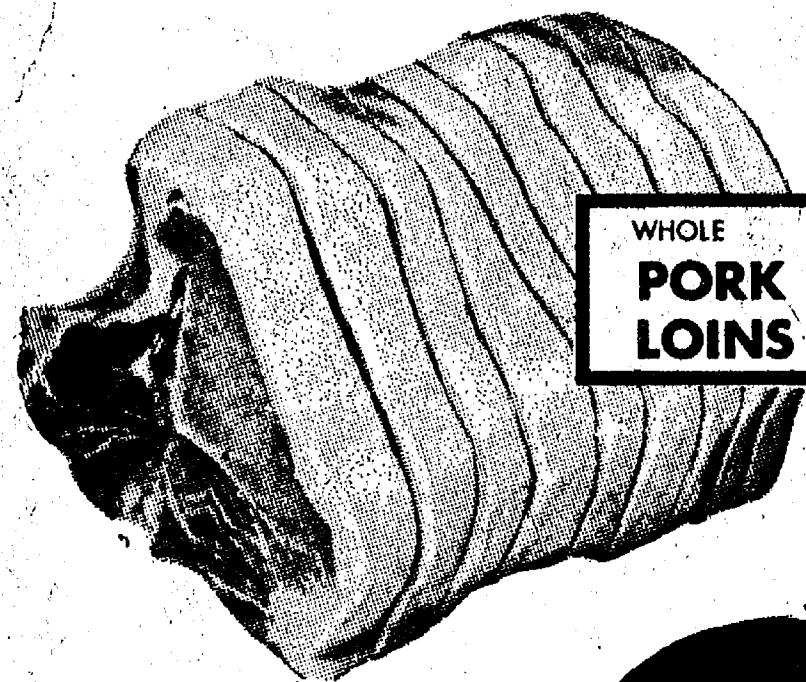
SAVE 6¢ KITTY SALMON CAT FOOD..... 6-OZ. **15¢**



SAVE 50¢
W/IN-STORE COUPON
TONY'S PIZZAS
31 1/2 OZ. SAUSAGE 28 1/2 OZ. PEPPERONI **\$2.19**

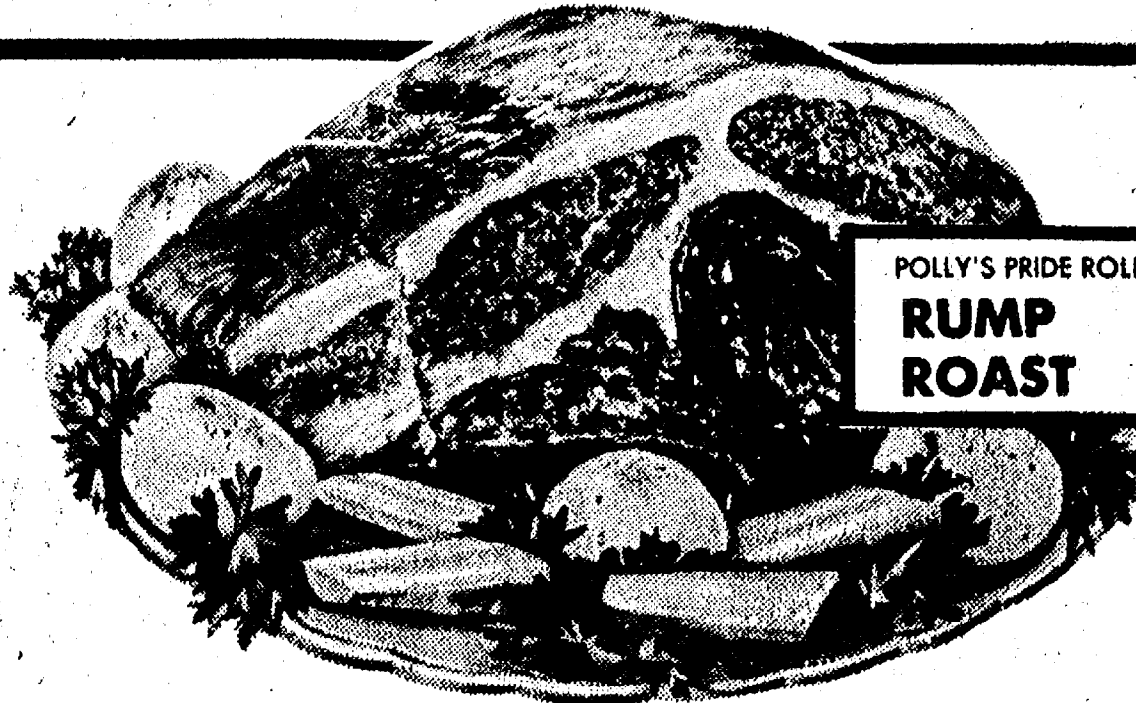
BEFORE INFLATION PRICES...

SAVING YOU MORE ON YOUR "TOTAL" FOOD BILL!



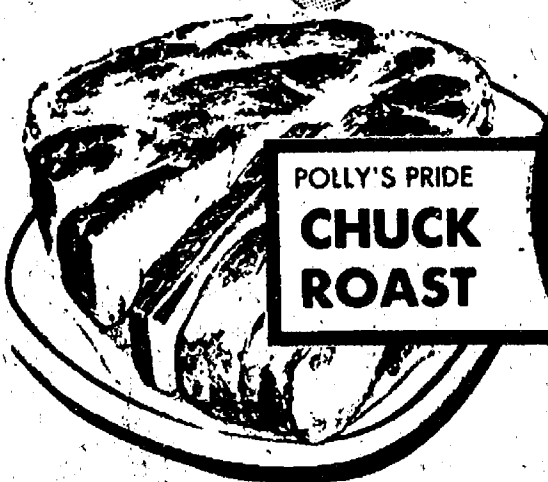
WHOLE
PORK
LOINS

LB. **97¢**



POLLY'S PRIDE ROLLED
RUMP
ROAST

LB. **\$1.29**



POLLY'S PRIDE
CHUCK
ROAST

LB. **49¢**

POLLY'S PRIDE CHUCK ARM ROAST	LB.	89¢
POLLY'S PRIDE CHUCK ENGLISH ROAST	LB.	79¢
POLLY'S PRIDE CHUCK BONELESS ROAST	LB.	89¢
POLLY'S PRIDE GROUND CHUCK	LB.	99¢

POLLY'S PRIDE WHOLE BEEF HINDS	cutting cost	LB.	89¢
POLLY'S PRIDE WHOLE BEEF TENDERLOINS		LB.	\$1.99
POLLY'S PRIDE BEEF HEARTS		LB.	39¢
FARMER PEETS LUNCH MEAT		LB.	\$1.09
FARMER PEETS BONANZA HAMS	water added	LB.	\$1.29
FRESH PORK HOCKS		LB.	59¢
FRESH SALT PORK		LB.	69¢
ARMOUR STAR CANNED PEAR HAM		5-LB.	\$6.99

SWIFT HOT DOGS	12-OZ.	59¢
HILLSHIRE SMOKED SAUSAGE	1-LB.	\$1.29
TENNESSEE PRIDE SAUSAGE	1-LB.	\$1.29
FRESH SMELT	LB.	79¢
BULK OYSTERS	1/2-PT.	\$1.19
I.O.F. SOLE FILLETS	LB.	99¢
BOOTH COOKED PERCH	LB.	89¢
SWIFT BROWN 'N' SERVE SAUSAGE	LB.	79¢

Frozen Food Specials



BANQUET COOKIN' BAGS 5-OZ.
4 for \$1



BORDEN
SHERBET
or
LITE-LINE
ICE-MILK
1/2-GAL

79¢

NICKERSON OCEAN PERCH	1-LB.	69¢
APPLE, RHUBARB, PEACH HARRISS PIES	8-IN.	79¢
JOHNS DELUXE COMBINATION PIZZA	33-OZ.	\$2.69
LA CHOY ASST. CHOW MEIN DINNERS	11-OZ.	69¢
JENOS PIZZA ROLLS	6-OZ.	49¢
WICKS PIE SHELLS	2-PK.	69¢

SCOT LAD ORANGE JUICE	16-OZ.	53¢
MEADOWBROOK COFFEE WHITENER	32-OZ.	49¢
BIRDSEYE MIXED VEGETABLES	10-OZ.	35¢
BIRDSEYE CAULI-FLOWER	10-OZ.	35¢
QUEEN OF SCOT CARI CORN	24-OZ.	39¢
QUEEN OF SCOT SPINACH STRIPS	20-OZ.	39¢

SUNSHINE FRESH

Fruits & Vegetables

U.S. NO. 1 MICHIGAN
POTATOES

59¢

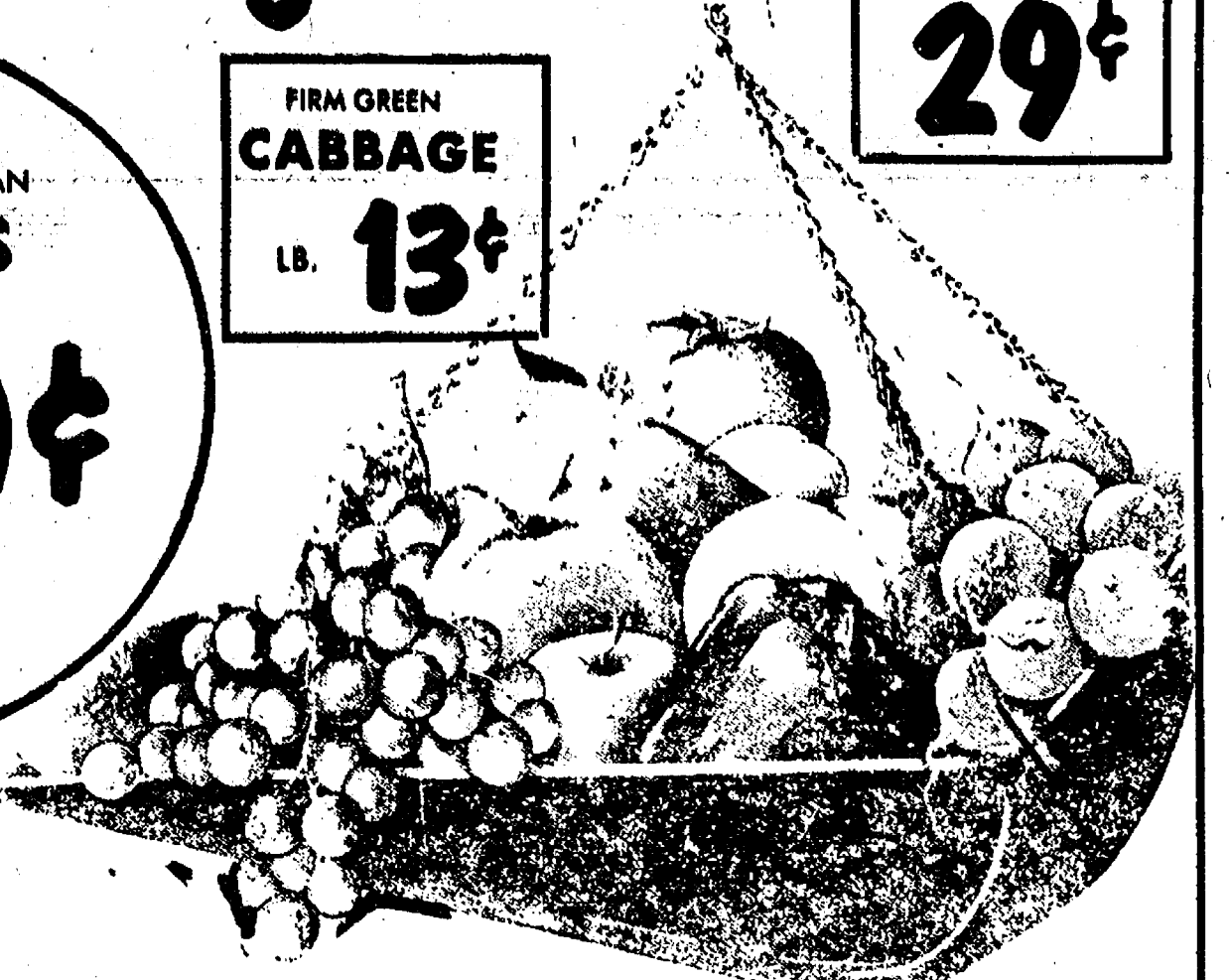
DON'T SETTLE FOR LESS!

FIRM GREEN
CABBAGE
LB. **13¢**

FRESH HEAD
LETTUCE

HD. **29¢**

LUSCIOUS RED STRAWBERRIES	QT.	69¢
TANTALIZING AVACADOES	EA.	29¢



FRESH Baked Goods!



8-INCH
CHERRY
PIE

99¢

SALT RISING BREAD 1-LB. **49¢**

ANGEL FOOD CAKE 8-IN. **79¢**

ST. PAT COOKIES DOZ. **79¢**

SAVE **20¢**



\$1.29

10 ounce Twin Pack
Regular and Mint **\$1.19** \$1.78 Value



RISE SHAVE CREAM

SNACK BAR

Special of the Week!

SLOPPY JOES
CHIPS & COKE

89¢



Everyday Low Prices

SAVING YOU MORE ON YOUR TOTAL FOOD BILL!

Kraft Macaroni & Cheese Dinner	7 1/2-OZ.	4/\$1.00
Miracle Whip Salad Dressing	32-OZ.	98¢
Valencia Cheese	2-LB.	\$1.39
Tenderleaf Tea Bags	100-ct.	\$1.29
Baker Choc. Flavor Chips	12-OZ.	79¢
Del Monte Fruit Cocktail	29-OZ.	53¢
Del Monte Peach Slices	29-OZ.	47¢
Del Monte Peach Halves	29-OZ.	47¢
Del Monte Catsup	32-OZ.	65¢

Dream Whip	8-OZ.	99¢
Hi C Orange	46-OZ.	47¢
Hi C Grape	46-OZ.	47¢
Nestle Instant Tea	3-OZ.	\$1.29
Wrigley Gum Spearmint	6 pk./7 stk.	69¢
Wrigley Gum Juicy Fruit	6 pk./7 stk.	69¢
Wrigley Gum Doublemint	6 pk./7 stk.	99¢
Wrigley Gum Juicy Fruit	6 pk./7 stk.	99¢
Dentyne Cinn.	10 pk.	99¢

Trident Asst.	10-pk.	99¢
Durkee Coconut	14-OZ.	99¢
Log Cabin Syrup	24-OZ.	\$1.09
Stove Top Chicken Stuf	12-OZ.	89¢
Allure Wood Wax Liquid	16-OZ.	99¢
Glad Oven Bags	8-ct.	49¢
Polly's Book Matches	50-ct.	19¢
Pillsbury Cake Mixes	19-OZ.	55¢
Orla Towels	Jumbo	54¢

Puffy Print Facial Tissue	175 ct.	52¢
Maxwell House Instant Coffee	10-OZ.	\$2.19
Del Monte Small Whole Potatoes	16-OZ.	25¢
Dads Root Beer	1/2-gal.	93¢
Armour Chili W/Beans	15-OZ.	59¢
Armour Corned Beef Hash	15-OZ.	74¢
Scot Lad Saltines	1-LB.	49¢
Polly's Book Matches	50-ct.	19¢
Swift Shortening	3-LB.	\$1.59

SAVE 8
COFFEE
MATE
15 OZ. **\$1.09**

SAVE 10 DURKEE
BLACK
PEPPER
4 OZ. **79¢**

SAVE 10 ARMOUR
BEEF
STEW
24 OZ. **79¢**

SAVE 10 ARMOUR
TREET
12 OZ. **79¢**

SAVE 30 DISINFECTANT
LYSOL
SPRAY
14 OZ. **\$1.29**

SAVE 20
CASCADE for
DISHWASHERS
50 OZ. **\$1.09**

SAVE 5 STOKELY CUT
GREEN
BEANS
3 16 OZ CANS **89¢**

**Thank
You**

FOR SHOPPING AT...



**WHERE WE ARE
HAPPY TO.....**

save YOU MONEY!